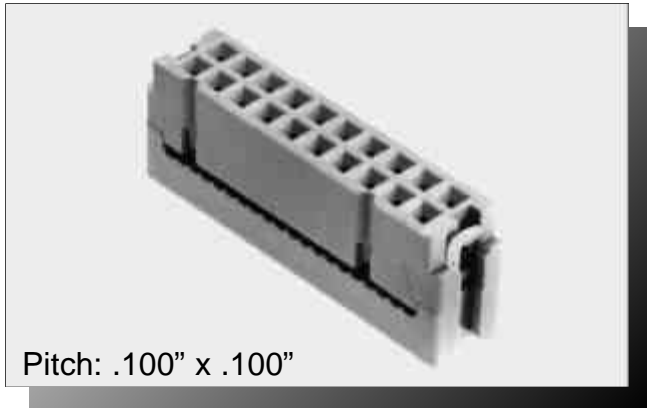


3



Pitch: .100" x .100"

INSULATION DISPLACEMENT SOCKET

SPECIFICATIONS

ENVIRONMENTAL

Temperature Range: -55°C to +105°C

MECHANICAL

Insulator Material: Glass-filled polyester, gray, UL94V-0

Contact Material: Phosphor Bronze

Contact Plating: See options below

Terminates To: .050" cable, 28 AWG

ELECTRICAL

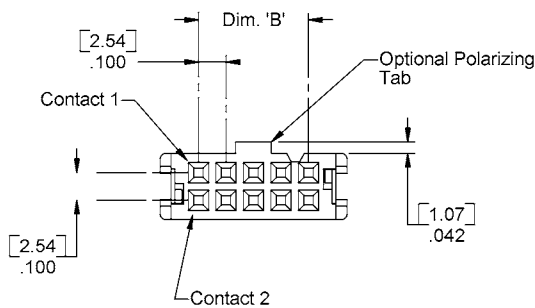
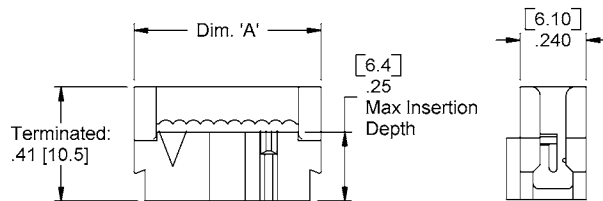
Current Rating: 1 AMP

Consult factory for additional options

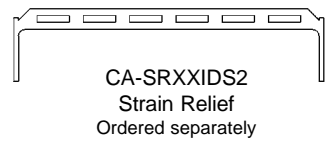
CA- POSITION IDS2- PLATING -SPT

POSITION		PLATING
06	26	C = 15µ IN gold
10	34	F = 30µ IN gold
14	40	
16	50	
20		

DIMENSIONS		
Position	A	B
06	.480 [12.19]	.200 [5.08]
10	.680 [17.27]	.400 [10.16]
14	.880 [22.35]	.600 [15.24]
16	.980 [24.89]	.700 [17.78]
20	1.180 [29.97]	.900 [22.86]
26	1.480 [37.59]	1.200 [30.48]
34	1.880 [47.75]	1.600 [40.64]
40	2.180 [55.37]	1.900 [48.26]
50	2.680 [68.07]	2.400 [60.96]



Socket Key
CA-IDSK



Mating Product: H Series (page 94-103), DXX, DXXR strip header (page 107-109), IDHB (page 82)
Drawing Number: CA-610034

