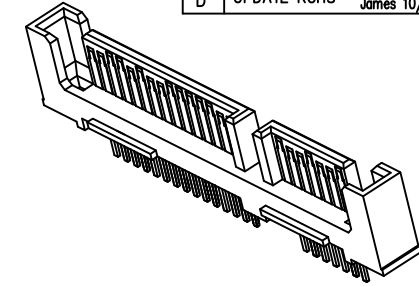
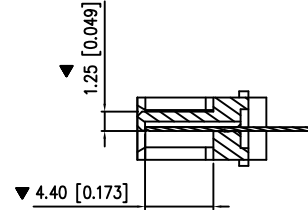
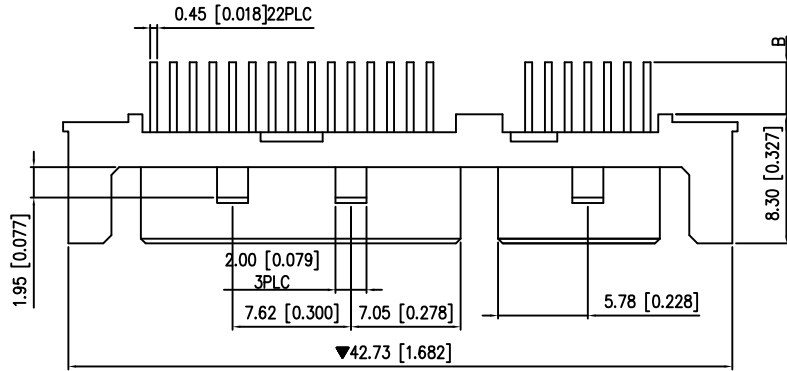


P/N CA-22SAPP-X-X-X

REV.	DESCRIPTION	DO.	APPD.
A	NEW RELEASE	H0638	Robbie
B	ADD THE ROHS Lucy 06/15/09'	H3406	Ray
C	CHANGE PART No. Jason 04/06/11'	H4563	Ray
D	UPDATE ROHS James 10/07/21'	H8583	Ray

PART No.	"B" DIMENSION
CA-22SAPP-X-X	3.35 [0.132]
CA-22SAPP-X-X-1	2.30 [0.091]



ORDERING NOMENCLATURE :

CA-22SAPP-X-X-X

NUMBER OF CONTACT POS  
SERIAL ATA PERIPHERAL PLUG

PLATING

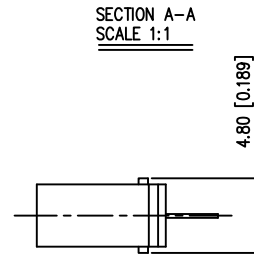
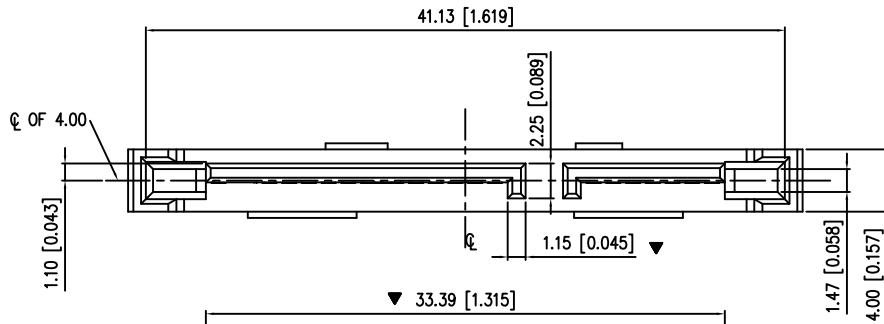
- A = CONTACT AREA : GOLD FLASH
- C = CONTACT AREA : .000015 [.00038] GOLD
- D = CONTACT AREA : .000005 [.00013] GOLD
- F = CONTACT AREA : .000030 [.00076] GOLD

MOUNTING STYLE

- 1 = THRU HOLE
- 2 = Molding

"B" DIMENSION:

- BLANK= 3.35 [0.132]
- 1=2.30 [0.091]



NOTES:

1.MATERIAL :

HOUSING : PBT G.F.30%, UL94V-0, COLOR : BLACK  
TERMINAL: Brass ,C2680-H  
THICKNESS = 0.25±0.01mm

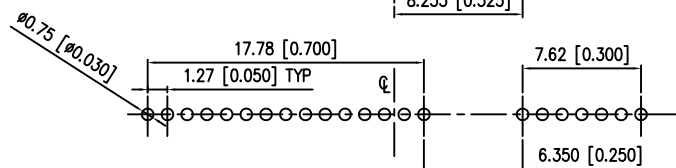
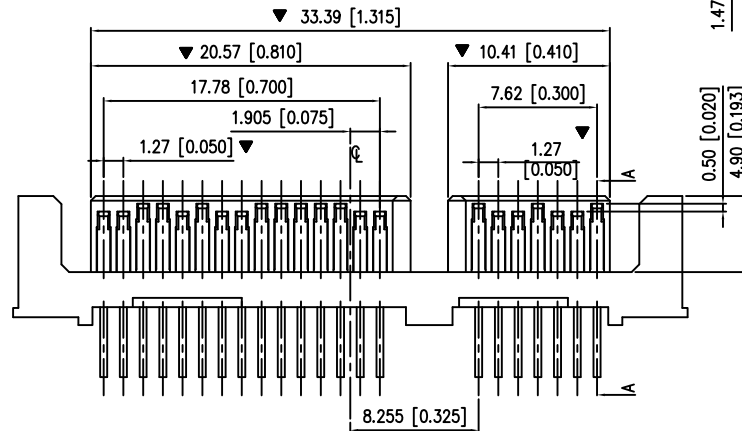
2.TERMINAL PLATING :

CONTACT AREA :AU PLATED AT CONTACT AREA  
UNDER PLATED: 75U" MIN NICKEL ALL OVER  
SOLDER TAIL: 100 u" MINIMUM TIN

3.MARK ▼ DIMENSION MUST BE CONTROLLED

4.ALL DIMENSION MEASURE BY FAI

5.MEETS THE REQUIREMENTS OF THE EUROPEAN PARLIAMENT AND THE RESTRICTION OF THE USE OF CERTAIN HAZARDOUS SUBSTANCES IN ELECTRICAL AND ELECTRONIC EQUIPMENT. (ROHS)



RECOMMENDED PCB LAYOUT

MILLIMETERS	INCH	UNITS	MM
X° ± 2°	X° ± 2°	MAT'L	NAME(INTENDED USE)
.X ± 0.20	.X ± .010		
.XX ± 0.15	.XX ± .008	FINISH	PART NO.(INTENDED USE)
.XXX ± 0.10	.XXX ± .006		
THESE DRAWINGS AND SPECIFICATIONS ARE THE PROPERTY OF CIRCUIT ASSEMBLY SHEN ZHEN AND SHALL NOT BE REPRODUCED, COPIED OR USED IN ANY MANNER WITHOUT THE PRIOR WRITTEN CONSENT OF CIRCUIT ASSEMBLY SHEN ZHEN			
Q'TY			
DR: RAY 11/20/04'			

SEE NOTES	NAME(INTENDED USE)
SEE NOTES	PART NO.(INTENDED USE)
SEE NOTES	APPD: Robbie lou11/20/04'
SEE NOTES	CHKD: Robbie lou11/20/04'
SEE NOTES	DR: RAY 11/20/04'

CIRCUIT ASSEMBLY SHENZHEN CA INDUSTRIAL BUILDING, AOXING ROAD, AOBEI SECOND VILLAGE, HENGANG TOWN, SHENZHEN CITY, GUANGDONG PROVINCE, CHINA.	TITLE:		
	CONNECTOR ASSEMBLY-- SAPP SERIES 22 POS., PLUG, THRU HOLE & MOLDING TYPE "RoHS"		
DWG NO.:			
H620043			
SCALE	SHEET	REV.	
1/1	1/1	D	