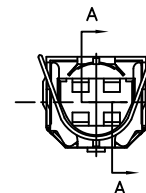
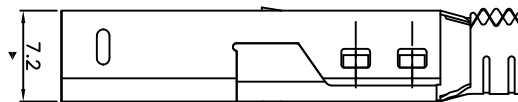
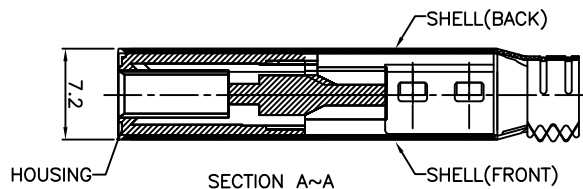
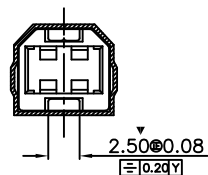
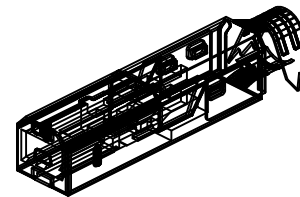
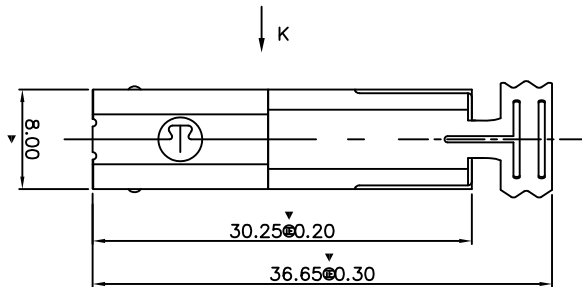


REV.	DESCRIPTION	DO	APPD.
A	NEW		Robbie
B	CHNGE	E030919H072	Robbie
C	ADD "ROHS" WHILE 07/10/07	H2307	Ray
D	UPDATE "ROHS" JAMES 07/03/21	H8548	Ray



NO OF POSITIONS _____ CA-XX USB X X X X-X X X X

04. 05.
PRODUCT _____

USB=UNIVERSAL SERIAL BUS CONNECTOR
SERIES _____

S=SOCKET
P=PLUG

TYPE _____

A=A TYPE
B=B TYPE

LAYOUT PROFILE _____

S=SMT
D=DIP
C=CRIMP
O=SOLDER

SHELL PLATING _____

N=NI PLATED
T=TIN PLATED
G=GOLD PLATED

COLOR _____

W=WHITE
B=BLACK

PLATING _____

A=GOLD FLASH CONTACT
B=3u" GOLD FLASH CONTACT
C=15u" GOLD FLASH CONTACT
F=30u" GOLD FLASH CONTACT

SERIAL NUMBER _____

001,002,003

010 USB B TYPE PLUG SOLDER OD5.0
023 USB B TYPE PLUG SOLDER FRONT NI BACK TIN OD5.0
030 USB B TYPE PLUG SOLDER FRONT GOLD BACK NI OD5.0

- ELECTRICAL CHARACTERISTICS:
CONTACT CURRENT RATING:5A MAX.
DIELECTRIC WITHSTANDING VOLLAGE:AC 1000V
INSULATION RESISTANCE:5000 MEGOHMS MIN AT DC 500V
CONTACT RESISTANCE:20 MILLIOHMS MAX
OPERATING TEMPERATURE:-55°
- MECHANICAL CHARACTERISTICS:
CONTACT RETENTION FORCE:35N MAX
CONTACT SEPARATION FORCE:10.N.MIN

- MATERIALS:
CONTACTS:PHOSPHOR BRONZE OR BRASS.
INSULATOR:PBT,UL 94-0
SHELL:COLD ROLLER STEEL

- FINISHES:
CONTACT:GOLD FLASH AND PURE TIN PATED
SHELL:NICKEL PLATED

- MEETS THE REQUIREMENTS OF THE EUROPEAN PARLIAMENT AND THE RESTRICTION OF THE USE OF CERTAIN HAZARDOUS IN ELECTRICAL AND ELECTRONIC EQUIPMENT. (ROHS)

5. ▽ DENOTES INSPECTION CRITERIA LINE NO.

MILLIMETERS	INCH	UNITS	MM	NAME(INTENDED USE)	CIRCUIT ASSEMBLY SHENZHEN CA INDUSTRIAL BUILDING, AOXING ROAD, AOBEI SECOND VILLAGE, HENGANG TOWN, SHENZHEN CITY, GUANGDONG,PROVINCE,CHINA
X° ± 3°	X° ± 3°	MAT'L		USB	
.X ± 0.25	.X ± .010	FINISH		PART NO.(INTENDED USE)	TITLE:
.XX ± 0.13	.XX ± .005		04USBPBOX-XXX	CONNECTION ASSEMBLY- USB SERIES 4P& 5P--TYPE 'B', PLUG, SOLDER, CA--XXUSBPBOX-XXX, "ROHS"	
.XXX ± ----	.XXX ± ----		APPD: Robbie09/18/03'	DWG NO.:	
THESE DRAWINGS AND SPECIFICATIONS ARE THE PROPERTY OF CIRCUIT ASSEMBLY SHEN ZHEN AND SHALL NOT BE REPRODUCED, COPIED OR USED IN ANY MANNER WITHOUT THE PRIOR WRITTEN CONSENT OF CIRCUIT ASSEMBLY SHEN ZHEN				Q'TY	H610023 SCALE SHEET REV. 1/1 1/1 D
				CHKD: Eric09/18/03'	
				DR: LUCY YAN 09/18/03	