

2



SERIAL ATA DEVICE SOCKET VERTICAL, THROUGH HOLE

SPECIFICATIONS

ENVIRONMENTAL

Temperature Range: -20°C to +85°C

MECHANICAL

Insulator Material: High-temperature thermoplastic, UL94V-0

Contact Material: Copper Alloy

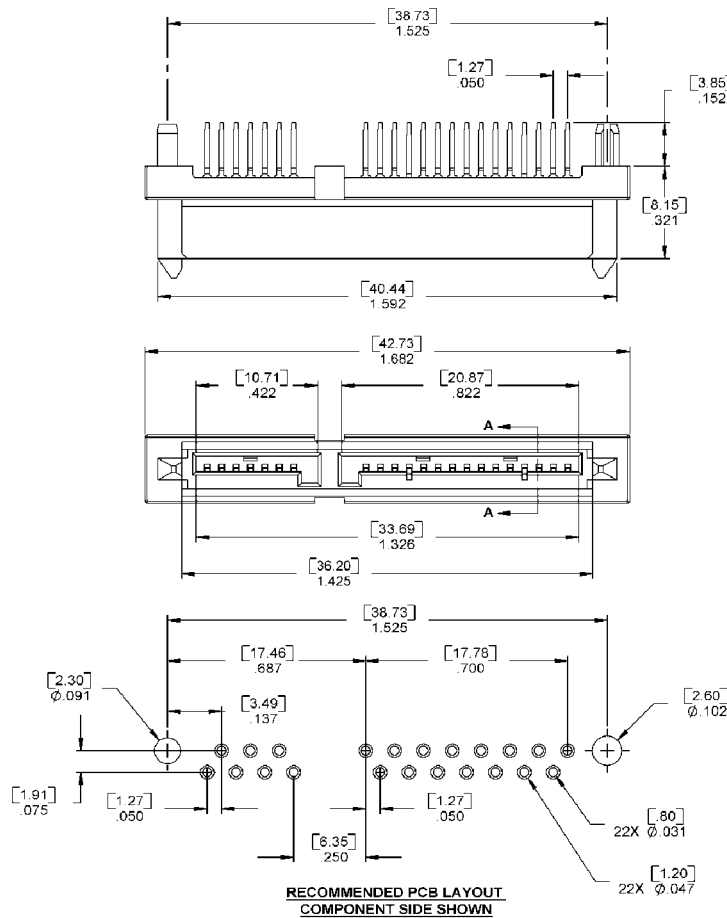
Contact Plating: See options below

ELECTRICAL

Current Rating: 1 AMP

CA-22SAHS-PLATING-1-1-1

PLATING	
A	= gold flash
C	= 15µ IN gold
D	= 5µ IN gold
F	= 30µ IN gold



Mating Product: SAPP (pages 25) SATA cable assemblies (page 37)

Drawing Number: CA-H610288

