

### DIP PLUG SOLDER TYPE

#### SPECIFICATIONS

##### ENVIRONMENTAL

Temperature Range: -55°C to +105°C

##### MECHANICAL

Insulator Material: Glass-filled nylon, black, UL94V-0

Contact Material: Brass, CDA 260

Contact Plating: 10µ IN gold

##### ELECTRICAL

Current Rating: 1 AMP

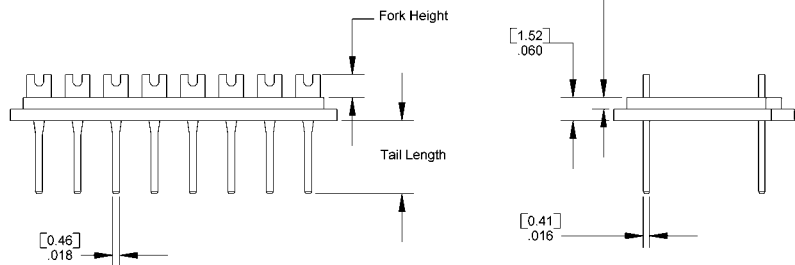
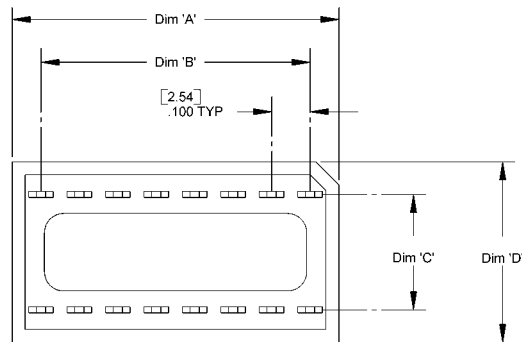
Consult factory for additional options

CA- POSITION P- TAIL/FORK

	POSITION	TAIL LENGTH	FORK HEIGHT
	08 20	02 = .190" [4.83]	.060" [1.52]
	*14 24	04 = .150" [3.81]	.060" [1.52]
	*16 28	11 = .190" [4.83]	.100" [2.54]
	18 40	12 = .150" [3.81]	.100" [2.54]

\* 14 & 16 positions available in Narrow Width, add NW to end of part number

DIMENSIONS				
Position	A	B	C	D
08	.450 [11.43]	.300 [7.62]	.300 [7.62]	.470 [11.94]
14	.750 [19.05]	.600 [15.24]	.300 [7.62]	.470 [11.94]
14*	.750 [19.05]	.600 [15.24]	.300 [7.62]	.395 [10.03]
16	.850 [21.59]	.700 [17.78]	.300 [7.62]	.470 [11.94]
16*	.850 [21.59]	.700 [17.78]	.300 [7.62]	.395 [10.03]
18	.950 [24.13]	.800 [20.32]	.300 [7.62]	.470 [11.94]
20	1.050 [26.67]	.900 [22.86]	.300 [7.62]	.470 [11.94]
24	1.250 [31.75]	1.100 [27.94]	.600 [15.24]	.795 [20.19]
28	1.450 [36.83]	1.300 [33.02]	.600 [15.24]	.795 [20.19]
40	2.050 [52.07]	1.900 [48.26]	.600 [15.24]	.795 [20.19]



Mating Product: S (page 151), SDL (page 154), SE (page 155)

Drawing Number CA-620394

