

## MODULAR, .016" SQUARE SYSTEM LOW PROFILE STRIPLINE PLUG

### SPECIFICATIONS

#### ENVIRONMENTAL

Temperature Range: -55°C to +105°C

#### MECHANICAL

Insulator Material: Glass-filled nylon, black, UL94V-0

Contact Material: Phosphor bronze

Contact Plating: See options below

#### ELECTRICAL

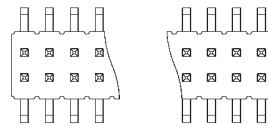
Current Rating: 0.5 AMP

Consult factory for additional options

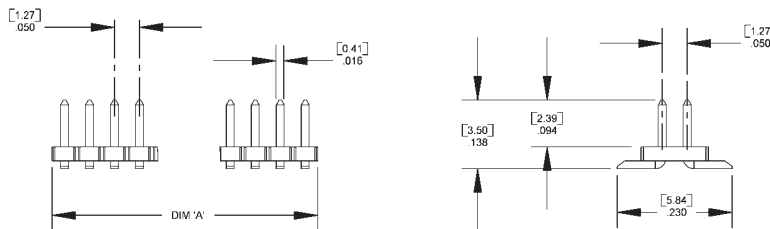
CA-  MP2-  -

POSITION	PLATING	LATCH
30	C = 15μ IN gold	0 = Without Latch
80	F = 30μ IN gold	1 = With Latch

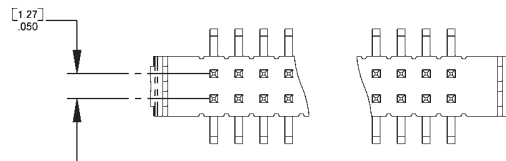
DIMENSIONS	
Position	A
30	.700 [17.78]
80	1.950 [49.53]



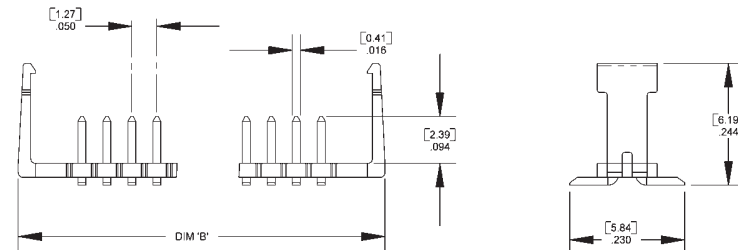
CA-XXMP2-X0 SHOWN



# New Product



CA-XXMP2-X1 SHOWN



Mating  
Product: MS2 cable assembly  
Drawing Number CA-620420

For more information please contact our customer service department or visit our website at circuitassembly.com