

Pitch: .100"

INSULATION DISPLACEMENT DIP PLUG

SPECIFICATIONS

ENVIRONMENTAL

Temperature Range: -55°C to +105°C

MECHANICAL

Insulator Material: Glass-filled polyester, gray, UL94V-0

Contact Material: Phosphor Bronze

Contact Plating: See options below

Terminates To: .050" cable, 28 AWG

ELECTRICAL

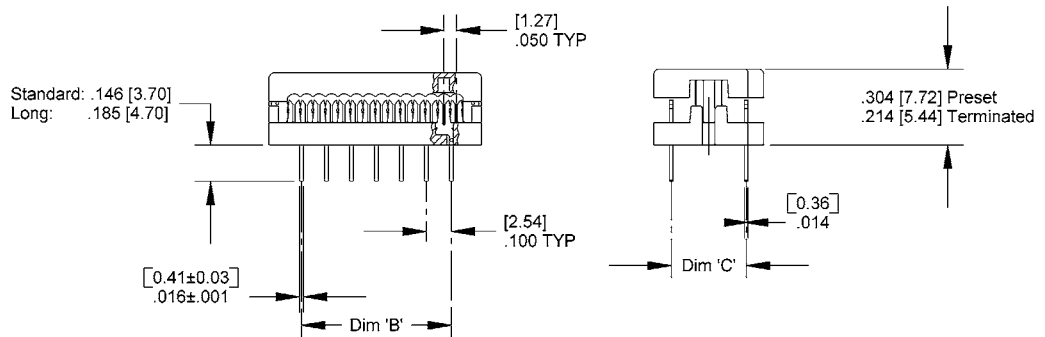
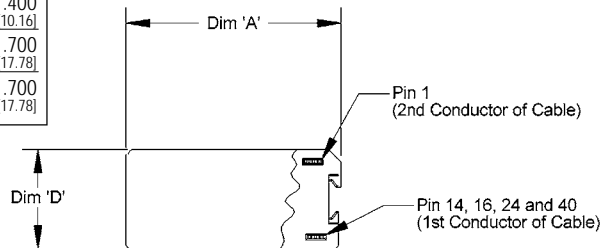
Current Rating: 1 AMP

Consult factory for additional options

CA- POSITION IDP2- TAIL

POSITION	TAIL TYPE
14 24	1T = Standard, 150μ IN tin
16 40	2B = Long, 10μ IN gold
	1B = Standard, 10μ IN gold
	2T = Long, 150μ IN tin

DIMENSIONS				
Position	A	B	C	D
14	.780 [19.81]	.600 [15.24]	.300 [7.62]	.400 [10.16]
16	.880 [22.35]	.700 [17.78]	.300 [7.62]	.400 [10.16]
24	1.280 [32.51]	1.100 [27.94]	.600 [15.24]	.700 [17.78]
40	2.080 [52.83]	1.900 [48.26]	.600 [15.24]	.700 [17.78]



Mating Product: PCB mount, S, SE sockets (long tail)

Drawing Number: CA-620020

For more information please contact our customer service department or visit our website at circuitassembly.com

Circuit Assembly Worldwide Hqtrs. 3A Vanderbilt, Irvine, CA 92618-2030 USA Tel 1-949-855-7887 Fax 1-949-855-4298

