

Pitch: .109" x .112"

D-SUB SOCKET, SOLDER CUP

SPECIFICATIONS

ENVIRONMENTAL

Temperature Range: -55°C to +105°C

MECHANICAL

Insulator Material: Glass-filled thermoplastic, black, UL94V-0

Shell Material: Steel

Contact Material: Copper Alloy

Contact Plating: Mating Area: Gold Flash

Solder Cup: Tin

ELECTRICAL

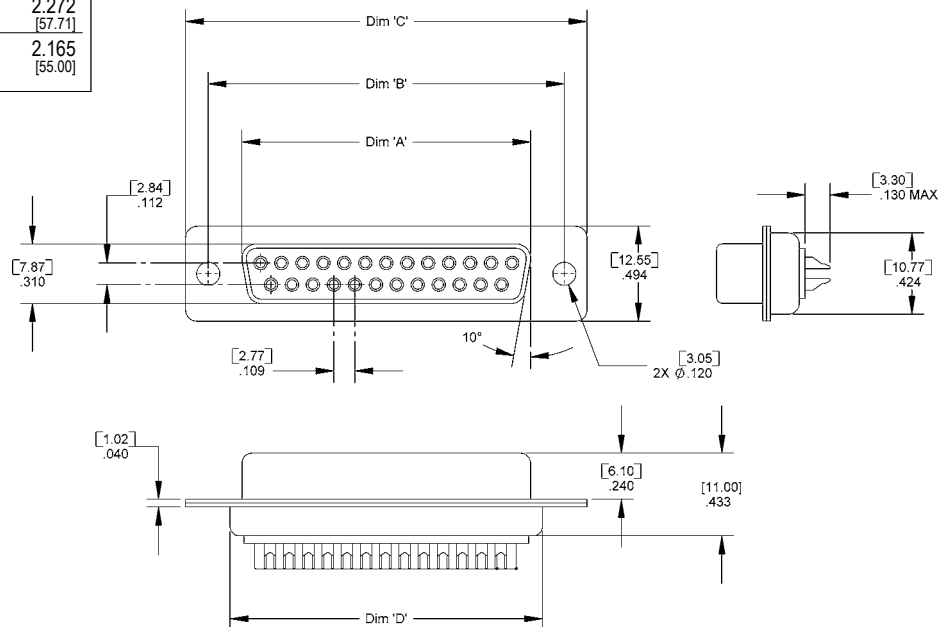
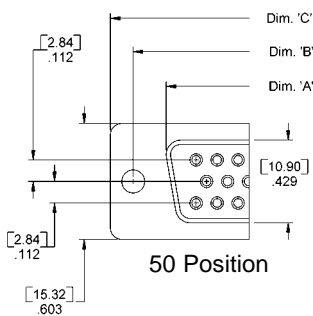
Current Rating: 1 AMP

Consult factory for additional options

CA- POSITION DSS

POSITION	
09	37
15	50
25	

DIMENSIONS				
Position	A	B	C	D
09	.643 [16.33]	.984 [25.00]	1.213 [30.81]	.759 [19.28]
15	.971 [24.66]	1.312 [33.30]	1.541 [39.14]	1.083 [27.51]
25	1.511 [38.38]	1.852 [47.05]	2.085 [52.96]	1.625 [41.28]
37	2.159 [54.84]	2.500 [63.50]	2.729 [69.32]	2.272 [57.71]
50	2.061 [52.35]	2.402 [61.00]	2.640 [67.06]	2.165 [55.00]



Mating Product: DPR (page 142), DPD (page 140), DPRL (page 144)

Drawing Number: CA-610118



For more information please contact our customer service department or visit our website at circuitassembly.com

Circuit Assembly Worldwide Hqtrs. 3A Vanderbilt, Irvine, CA 92618-2030 USA Tel 1-949-855-7887 Fax 1-949-855-4298