



# D-SUB, HIGH DENSITY SOCKET, CRIMP TYPE

## SPECIFICATIONS

### ENVIRONMENTAL

Temperature Range: -55°C to +105°C

### MECHANICAL

Insulator Material: Glass-filled thermoplastic, black, UL94V-0

Shell Material: Steel

Contact Material: Copper Alloy

Contact Plating: Gold Flash

### ELECTRICAL

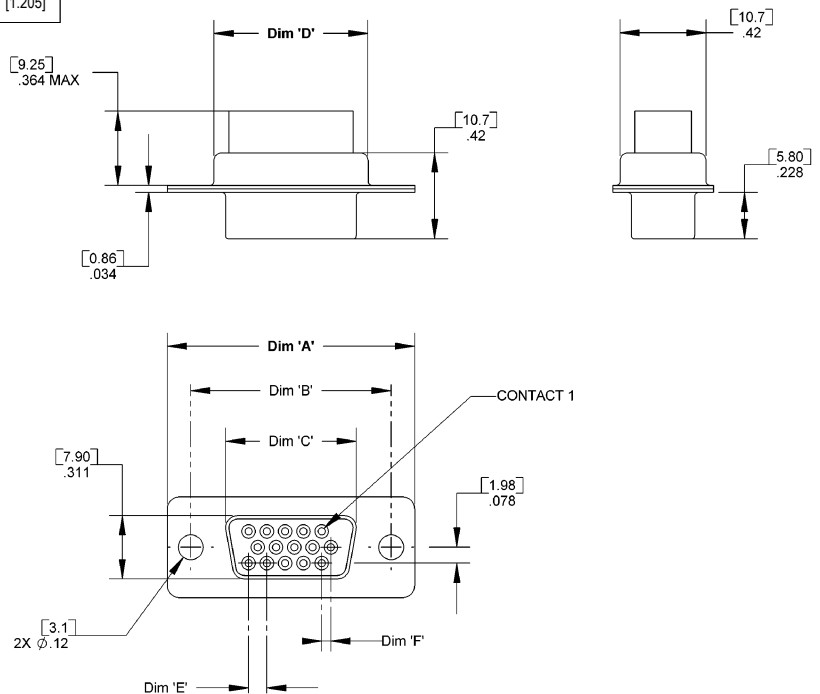
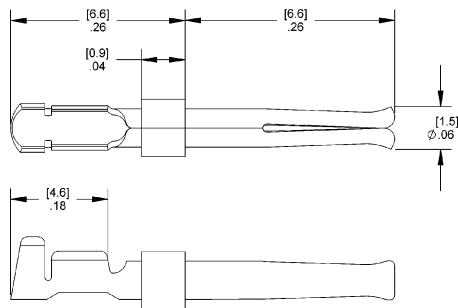
Current Rating: 1 AMP

Consult factory for additional options

CA- POSITION DHDSC

POSITION	
15	44
26	62

DIMENSIONS						
Position	A	B	C	D	E	F
15	1.21 [30.9]	.980 [25.0]	.640 [16.25]	.76 [19.3]	.090 [2.29]	.0451 [1.145]
26	1.55 [39.3]	1.31 [33.3]	.967 [24.55]	1.09 [27.7]	.090 [2.29]	.0451 [1.145]
44	2.09 [53.1]	1.85 [47.1]	1.506 [38.25]	1.62 [41.2]	.090 [2.29]	.0451 [1.145]
62	2.73 [69.5]	2.50 [63.5]	2.156 [54.75]	2.26 [57.5]	.095 [2.41]	.0474 [1.205]



Contacts sold separately  
 Reels of 10,000 contacts  
 CA-DHDSC-A  
 Wire gauge range: 22-28 AWG

Mating Product: DHDP (page 129)  
 Drawing Number: CA-610235

For more information please contact our customer service department or visit our website at [circuitassembly.com](http://circuitassembly.com)

