



SERIAL ATA VERTICAL HOST PLUG THROUGH HOLE

2

SPECIFICATIONS

ENVIRONMENTAL

Temperature Range: -20°C to +85°C

MECHANICAL

Insulator Material: High-temperature thermoplastic, UL94V-0

Contact Material: Copper Alloy

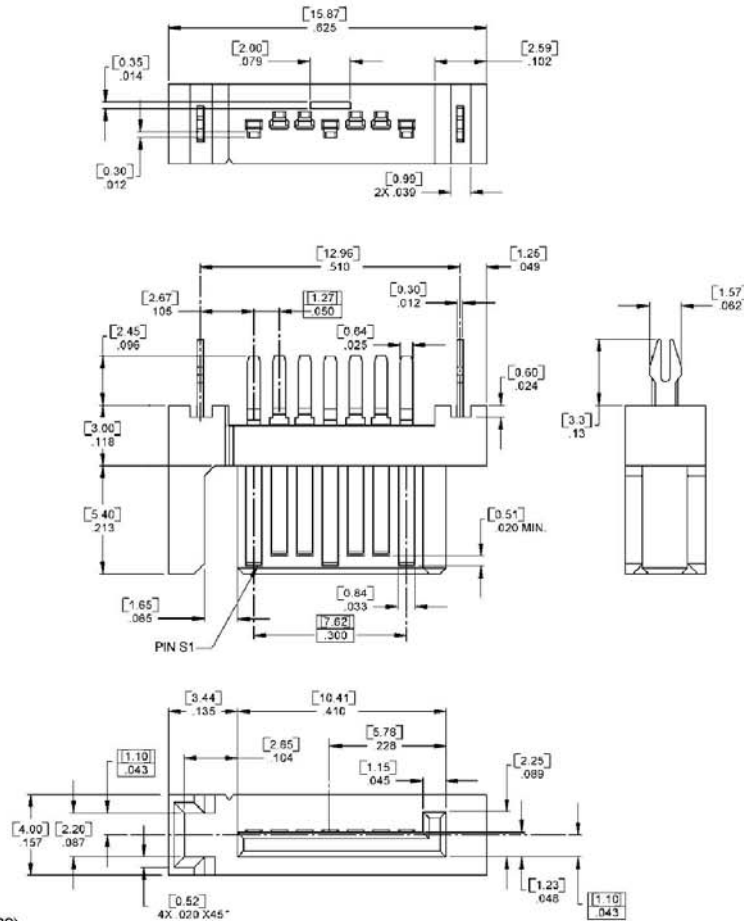
Contact Plating: See options below

ELECTRICAL

Current Rating: 1 AMP

CA-07SAHP-PLATING-1

PLATING	
A	= gold flash
C	= 15µ IN gold
D	= 5µ IN gold
F	= 30µ IN gold



Mating Product: SAHS (pages 26-29)
Drawing Number: CA-620438



For more information please contact our customer service department or visit our website at circuitassembly.com
Circuit Assembly Worldwide Hqtrs. 3A Vanderbilt, Irvine, CA 92618-2030 USA Tel: 1-949-855-7887 Fax: 1-949-855-4298