



.200" CENTER PLUG 4 PIN POWER, RIGHT ANGLE

SPECIFICATIONS

ENVIRONMENTAL

Temperature Range: -55°C to +105°C

MECHANICAL

Insulator Material: Nylon 66, UL94V-0

Contact Material: Copper Alloy

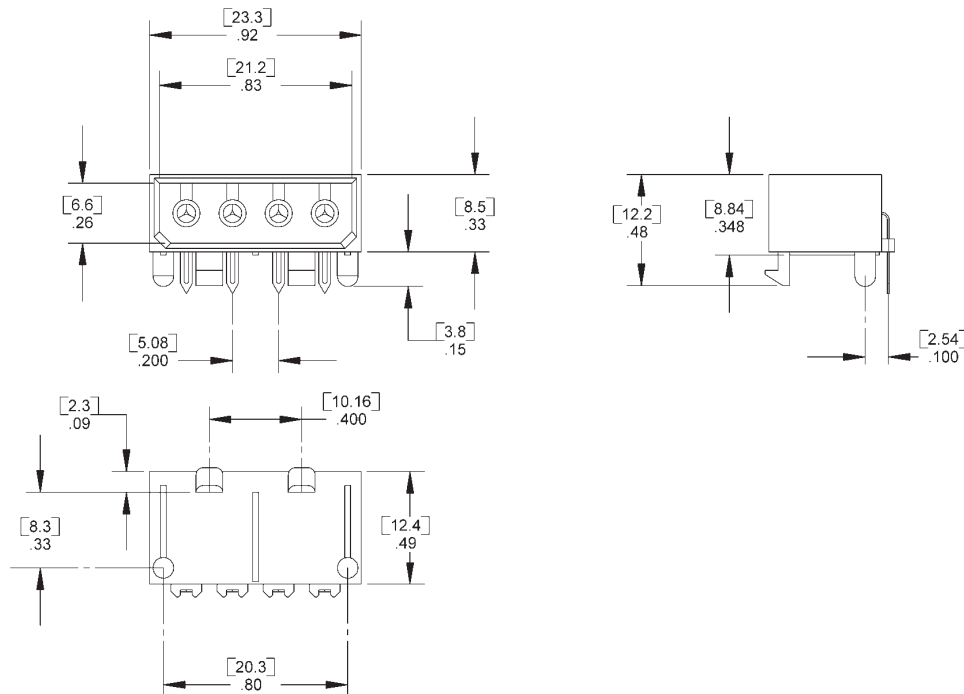
Contact Plating: Tin/Lead Alloy

ELECTRICAL

Current Rating: 7 AMP

Consult factory for additional options

CA-04PR-PWR



Drawing Number CA-620397

For more information please contact our customer service department or visit our website at circuitassembly.com

Circuit Assembly Worldwide Hqtrs. 18 Thomas Street, Irvine, CA 92618-2777 USA Tel 1-949-855-7887 Fax 1-949-855-4298

Circuit Assembly Asia Hqtrs. 2F, No. 10 Lane 24, Ho Ping Rd., Pan Chiao City, Taipei Hsien, Taiwan Tel +886 2-2951-9916 Fax +886 2-2954-9126