

ORDERING NOMENCLATURE :

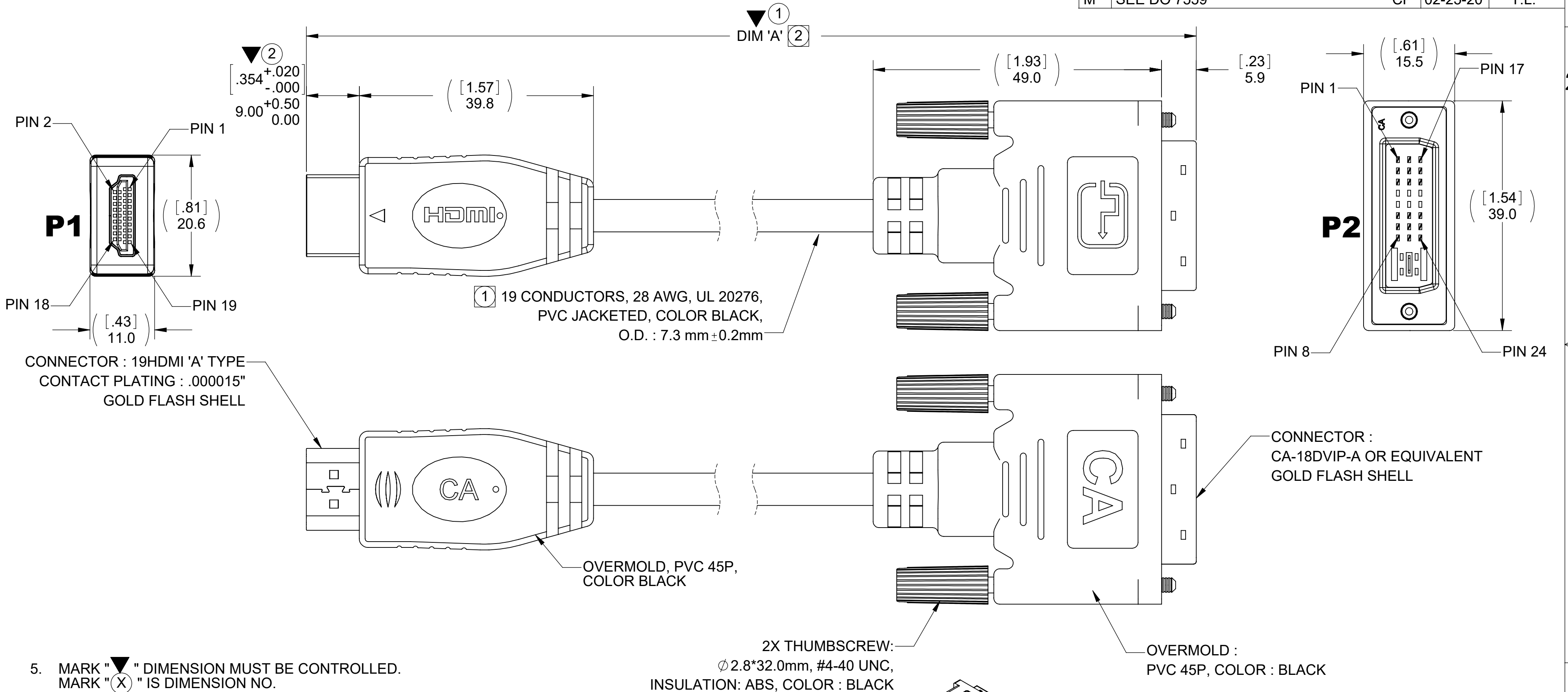
CA-U710000 - 02.0

DIM 'A' (2)

02.0 = 2 METERS
CONSULT FACTORY FOR OTHER LENGTHS.

REVISIONS

LTR	DESCRIPTION	DATE	APPROVED
A	INITIAL RELEASE SEE DO 5471	CP 5-10-04	A.J.
B	SEE DO 5526	CP 7-06-04	A.J.
C	SEE DO 5528	CP 7-12-04	A.J.
D	SEE DO 5588	CP 9-08-04	A.J.
E	SEE DO 5848	CP 8-29-05	L.F.
F	SEE DO 6393	CP 4-19-07	I.M.
G	SEE DO 6462	CP 7-02-07	A.J.
H	SEE DO 6485	CP 7-16-07	I.M.
J	SEE DO 6487	CP 7-17-07	I.M.
K	SEE DO 7347	CP 12-14-15	I.M.
L	SEE DO 7364	CP 07-08-16	I.M.
M	SEE DO 7559	CP 02-25-20	T.L.



5. MARK "▼" DIMENSION MUST BE CONTROLLED.
MARK "(X)" IS DIMENSION NO.

4. MEETS THE REQUIREMENTS OF THE EUROPEAN PARLIAMENT AND THE RESTRICTION OF THE USE OF CERTAIN HAZARDOUS SUBSTANCES IN ELECTRICAL AND ELECTRONIC EQUIPMENT. (RoHS)

(3) FOR WIRING DIAGRAM, SEE SHEET 2 OF 2

(2) TOLERANCE TABLE :

DIM 'A'	TOLERANCE (IN METERS)
0M-2M	±.03M
2M-5M	±.05M
5M-10M	±.08M

(1) FOR OPTIONAL OVERMOLD COLORS, CABLES, AND SHELL PLATING, CONSULT CA FACTORY.
NOTES : UNLESS OTHERWISE SPECIFIED

DIMENSIONS ARE IN MM
TOLERANCES ARE:

DECIMALS	ANGLES
.X ± .25	±3°
.XX ± .13	

DIMENSIONS IN BRACKETS [X.XX] ARE IN INCHES
TOLERANCES ARE:

DECIMALS	ANGLES
.XX ± .010	±3°
.XXX ± .005	

DO NOT SCALE DRAWING

APPROVALS

DRAWN CUONG P. 5-06-04

CHECKED A. JOCHEN 5-06-04

DATE 5-06-04

THE INFORMATION AND DESIGN DISCLOSED HEREIN WAS ORIGINATED BY AND IS THE PROPERTY OF CIRCUIT ASSEMBLY CORPORATION. CIRCUIT ASSEMBLY CORPORATION RESERVES ALL PATENT, PROPRIETARY, DESIGN, MANUFACTURING, REPRODUCTION, USE AND SALES RIGHTS THERETO, AND TO ANY ARTICLE DISCLOSED HEREIN EXCEPT TO THE EXTENT RIGHTS ARE EXPRESSLY GRANTED TO OTHERS. THE FOREGOING DOES NOT APPLY TO VENDOR PROPRIETARY RIGHTS.

CA CIRCUIT ASSEMBLY CORP.
3A VANDERBILT, IRVINE, CALIFORNIA 92618-2030

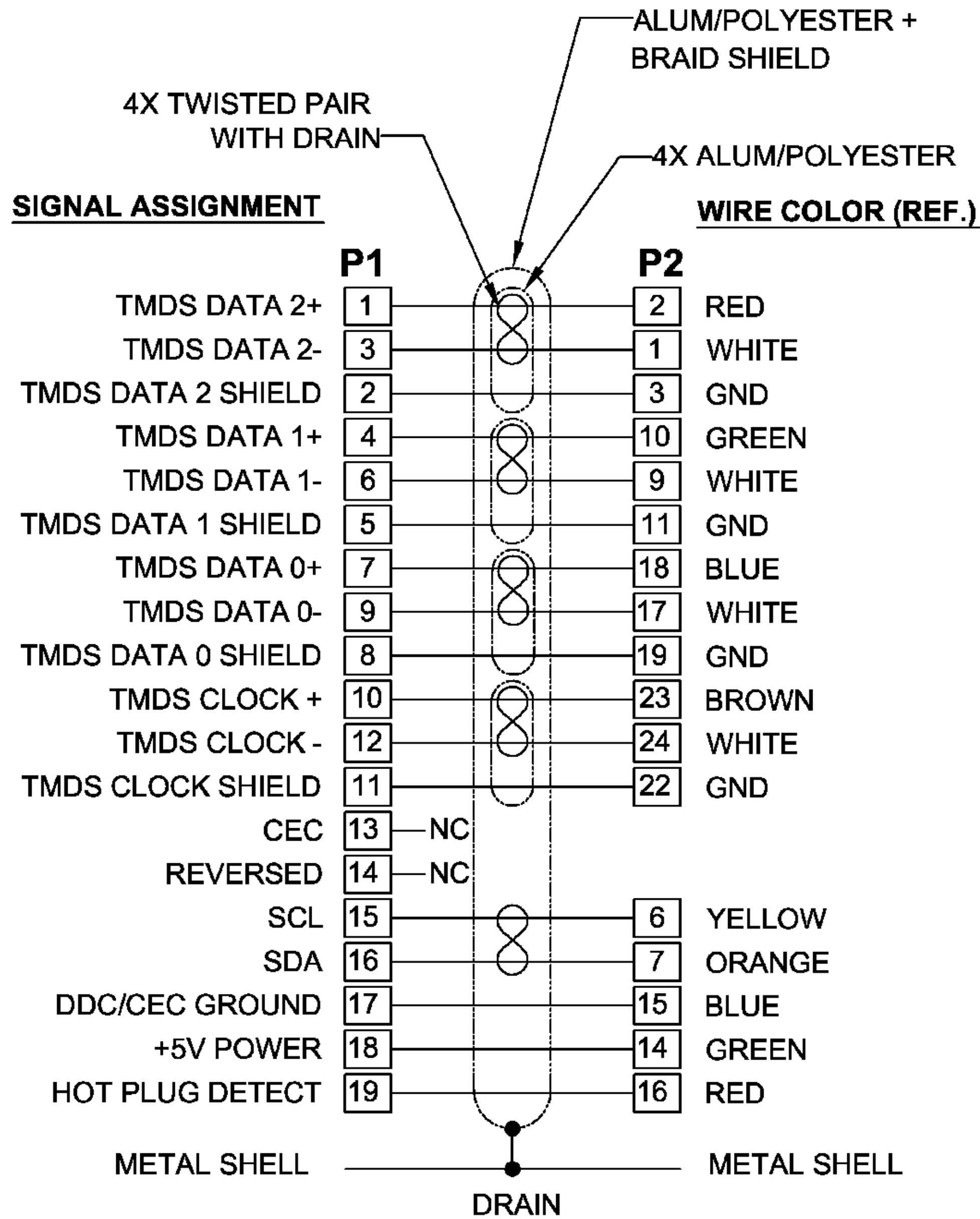
CABLE ASSEMBLY - HDMI, DVI SERIES CA-D19HMP/18DVIP "RoHS"

SIZE	CODE IDENT NO.	DRAWING NO.	REV.
C	52072	U710000	M

SCALE: 2:1 SHEET 1 OF 2

REVISIONS			
LTR	DESCRIPTION	DATE	APPROVED
	SEE SHEET 1 OF 2		

WIRING DIAGRAM :



DIMENSIONS ARE IN INCHES TOLERANCES ARE: DECIMALS ANGLES .XX ±.005 ±3° .XXX ±.002	APPROVALS DRAWN CUONG P. CHECKED A. JOCHEN	DATE 5-06-04 5-06-04	<div style="display: flex; align-items: center;"> CIRCUIT ASSEMBLY CORP. <small>3A VANDERBILT, IRVINE, CALIFORNIA 92618-2030</small> </div> CABLE ASSEMBLY - HDMI, DVI SERIES CA-D19HMP/18DVIP "RoHS"								
DIMENSIONS IN BRACKETS [X.XX] ARE IN MILLIMETERS TOLERANCES ARE: DECIMALS ANGLES .X ± ±3° .XX ±	<small>THE INFORMATION AND DESIGN DISCLOSED HEREIN WAS ORIGINATED BY AND IS THE PROPERTY OF CIRCUIT ASSEMBLY CORPORATION. CIRCUIT ASSEMBLY CORPORATION RESERVES ALL PATENT, PROPRIETARY, DESIGN, MANUFACTURING, REPRODUCTION, USE AND SALES RIGHTS THERETO, AND TO ANY ARTICLE DISCLOSED HEREIN EXCEPT TO THE EXTENT RIGHTS ARE EXPRESSLY GRANTED TO OTHERS. THE FOREGOING DOES NOT APPLY TO VENDOR PROPRIETARY RIGHTS.</small>		<table border="1" style="width: 100%; border-collapse: collapse;"> <tr> <td style="width: 25%;">SIZE</td> <td style="width: 25%;">CODE IDENT NO.</td> <td style="width: 25%;">DRAWING NO.</td> <td style="width: 25%;">REV.</td> </tr> <tr> <td style="text-align: center;">C</td> <td style="text-align: center;">52072</td> <td style="text-align: center;">U710000</td> <td style="text-align: center;">M</td> </tr> </table>	SIZE	CODE IDENT NO.	DRAWING NO.	REV.	C	52072	U710000	M
SIZE	CODE IDENT NO.	DRAWING NO.	REV.								
C	52072	U710000	M								
DO NOT SCALE DRAWING	SCALE: NONE		SHEET 2 OF 2								