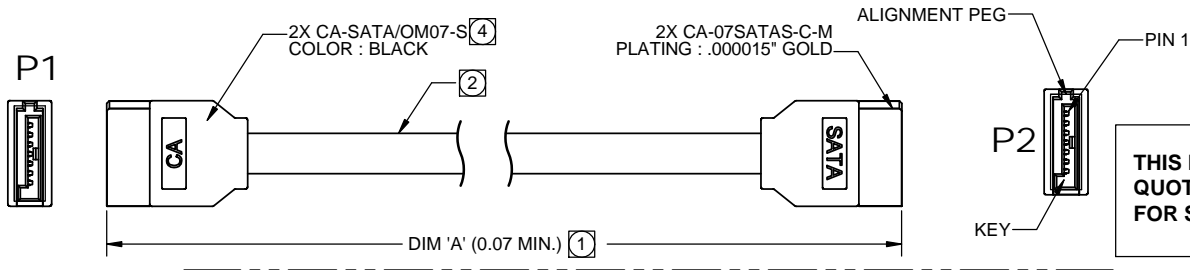


PART NO. CA-CSATA-X-XX-X.XX

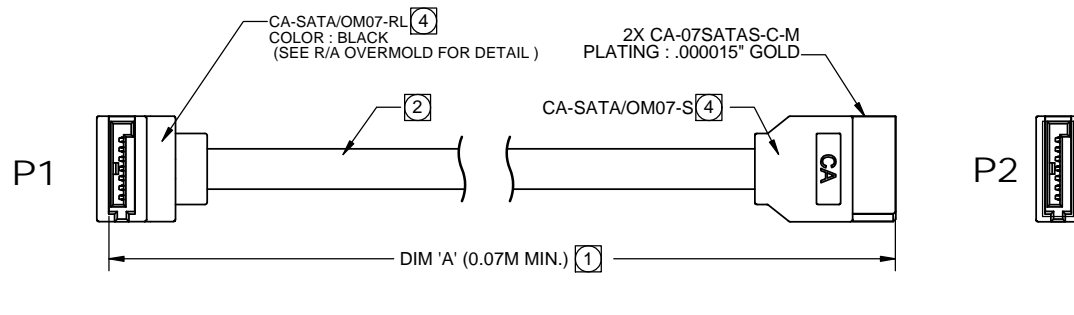
CA-CSATA-0-0 STRAIGHT, BOTH ENDS SHOWN



REVISIONS				
LTR	DESCRIPTION	DATE	APPROVED	
A	INITIAL RELEASE SEE DO 6437	CP 05-29-07	I.M.	
B	SEE DO 6945	CP 04-07-10	I.M.	
C	SEE DO 7352	CP 03-02-16	I.M.	
D	SEE DO 7478	CP 08-23-18	T.L.	
E	SEE DO 7484	CP 09-19-18	T.L.	

**THIS DRAWING AND ORDERING NOMENCLATURE IS FOR CUSTOMER QUOTATION OF BUILD-TO-ORDER NON STOCK ITEMS. FOR STANDARD STOCKED CONFIGURATIONS, REFER TO CA DRAWING U709000.**

CA-CSATA-1-0 STRAIGHT TO RIGHT ANGLE (KEY IN) SHOWN



ORDERING NOMENCLATURE

CA - CSATA - X - X X - X.XX

CABLE ASSEMBLY SERIAL ATA

CONNECTOR STYLE

- 0 = STRAIGHT, BOTH ENDS
- 1 = STRAIGHT TO RIGHT ANGLE (KEY IN)
- 2 = RIGHT ANGLE, SAME DIRECTION
- 3 = STRAIGHT TO RIGHT ANGLE (KEY OUT)
- 4 = RIGHT ANGLE, UP & DOWN (KEY IN)
- 5 = RIGHT ANGLE, UP & DOWN (KEY OUT)

CABLE STYLE AND COLOR (2)

- 0 = 26 AWG RED OPAQUE FLAT
- 1 = 30 AWG RED OPAQUE FLAT
- 2 = 26 AWG CLEAR TRANSLUCENT FLAT
- 3 = 30 AWG CLEAR TRANSLUCENT FLAT
- 4 = 26 AWG BLUE OPAQUE FLAT
- 5 = 30 AWG BLUE OPAQUE FLAT

OVERMOLD COLOR (4)

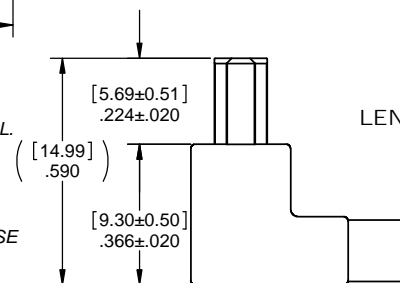
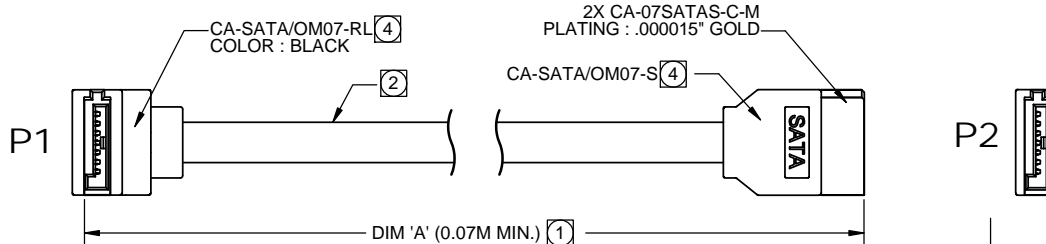
- BLANK = BLACK OVERMOLD
- 2 = RED OVERMOLD
- 4 = YELLOW OVERMOLD
- 5 = GREEN OVERMOLD
- 6 = BLUE OVERMOLD
- 9 = CLEAR OVERMOLD

LENGTH (1)

DIM 'A' (IN METERS)

DIM 'A'	TOLERANCE
0.07M - 0.5M	±.025M
0.51M - 1.00M	±.05M
1.01M-3.00M	±.08M

CA-CSATA-3-0 STRAIGHT TO RIGHT ANGLE (KEY OUT) SHOWN



- 8. REFER TO CA DWG #H610368 FOR CONNECTOR ASSEMBLY, CA DWG # 630028 OVERMOLD DETAIL.
- 7. PACKAGE CABLE IN INDIVIDUALLY PE BAG.
- 6. MEETS THE REQUIREMENTS OF THE SERIAL ATA II (SATA II) STANDARD.
- 5. MEETS THE REQUIREMENTS OF THE EUROPEAN PARLIAMENT AND THE RESTRICTION OF THE USE OF CERTAIN HAZARDOUS SUBSTANCES IN ELECTRICAL AND ELECTRONIC EQUIPMENT (RoHS).

(4) OVERMOLD COLOR ( SEE ORDERING NOMENCLATURE)

3. VOLTAGE RATING : 30V

(2) RECOMMENDED SERIAL ATA CABLE SOURCES :  
SPACE SHUTTLE  
DerAn  
OR CAC APPROVED EQUIVALENT

(1) TOLERANCE OF CABLE LENGTH : (SEE ORDERING NOMENCLATURE)

NOTES : UNLESS OTHERWISE SPECIFIED

DIMENSIONS ARE IN INCHES TOLERANCES ARE:

DECIMALS ANGLES  
.XX ±.50 ±3°  
.XXX ±.25

DIMENSIONS IN BRACKETS [X.XX] ARE IN MILLIMETERS TOLERANCES ARE:

DECIMALS ANGLES  
.X ± 12.7 ±3°  
.XX ± 6.4

DO NOT SCALE DRAWING

APPROVALS DATE

DRAWN CUONG P. 5-29-07  
CHECKED IAN MORRELL 5-29-07

THE INFORMATION AND DESIGN DISCLOSED HEREIN WAS ORIGINATED BY AND IS THE PROPERTY OF CIRCUIT ASSEMBLY CORPORATION. CIRCUIT ASSEMBLY CORPORATION RESERVES ALL PATENT, PROPRIETARY, DESIGN, MANUFACTURING, REPRODUCTION, USE AND SALES RIGHTS THEREIN, AND TO ANY ARTICLE DISCLOSED HEREIN EXCEPT TO THE EXTENT RIGHTS ARE EXPRESSLY GRANTED TO OTHERS. THE FOREGOING DOES NOT APPLY TO VENDOR PROPRIETARY RIGHTS.

**CA** CIRCUIT ASSEMBLY CORP.  
3A VANDERBILT, IRVINE, CALIFORNIA 92618-2030

**CABLE ASSEMBLY - SATA SERIES**  
**CA-D07SATAS-XXX-"RoHS"**  
**WITH R/A LOW PROFILE OVERMOLD**

SIZE	CODE IDENT NO.	DRAWING NO.	REV.
C	52072	U709079	E

SCALE: 2:1 SHEET 1 OF 2

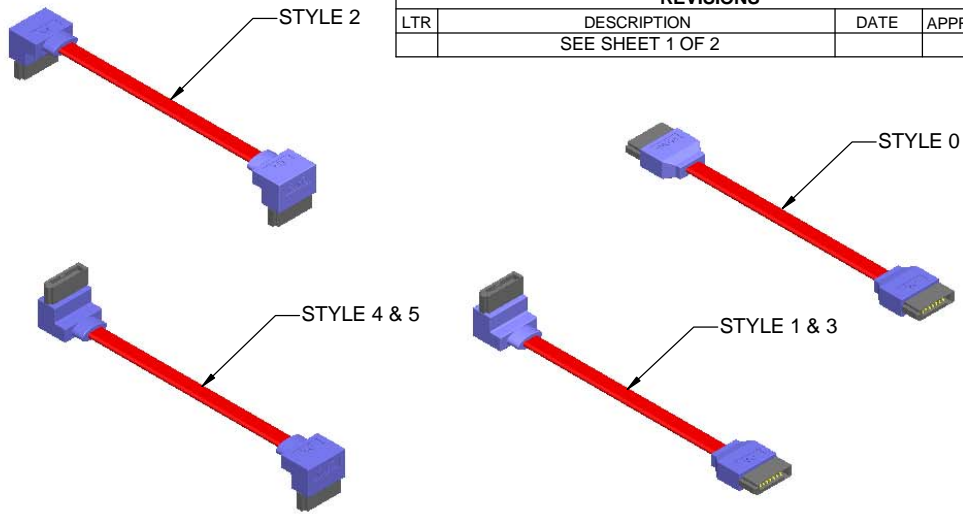
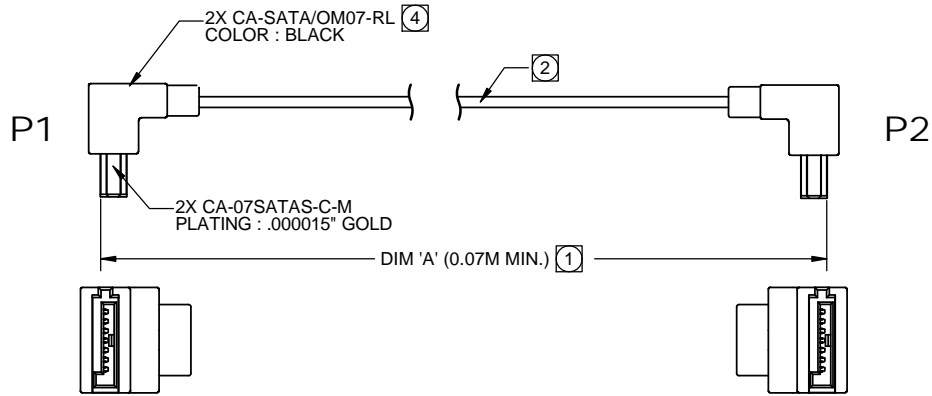
4

3

2

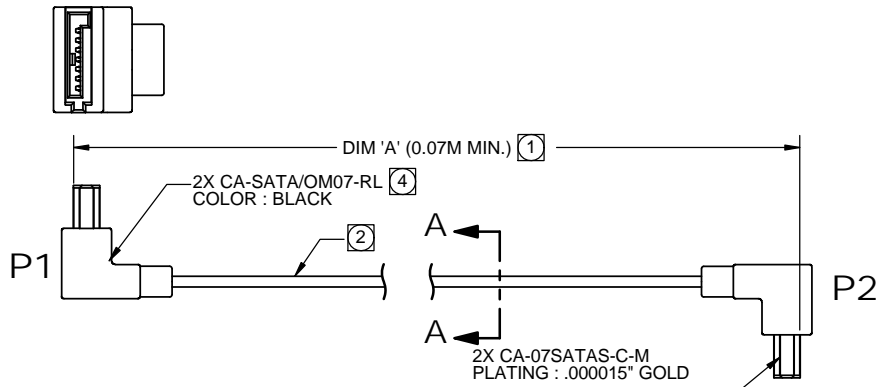
1

CA-CSATA-2-0 RIGHT ANGLE, SAME DIRECTION SHOWN

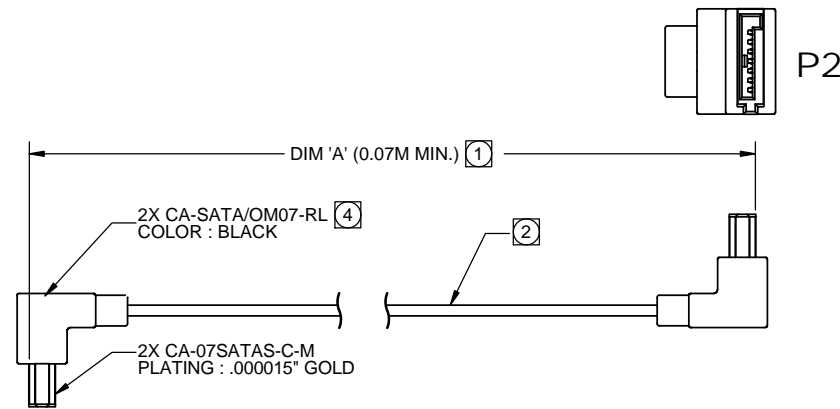


REVISIONS			
LTR	DESCRIPTION	DATE	APPROVED
	SEE SHEET 1 OF 2		

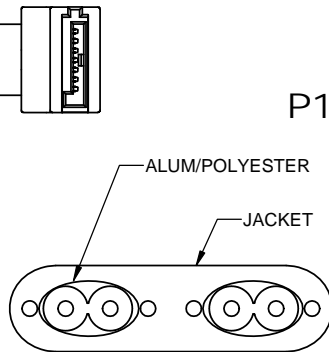
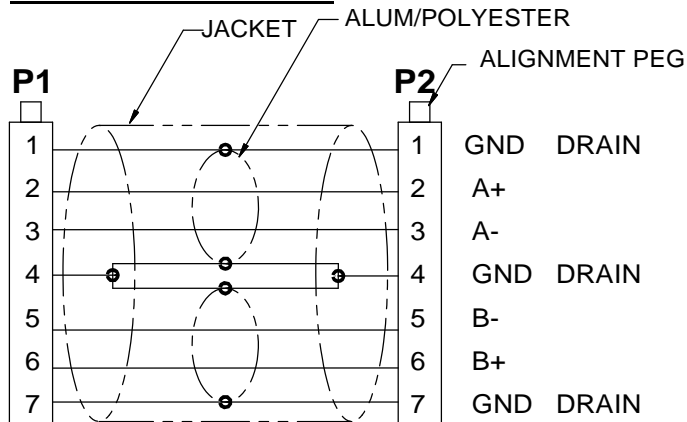
CA-CSATA-4-0 RIGHT ANGLE, UP & DOWN (KEY IN) SHOWN



CA-CSATA-5-0 RIGHT ANGLE, UP & DOWN (KEY OUT) SHOWN



WIRING DIAGRAM :



DIMENSIONS ARE IN INCHES TOLERANCES ARE:	
DECIMALS .XX ±.50	ANGLES ±3°
.XXX ±.25	
DIMENSIONS IN BRACKETS [X.XX] ARE IN MILLIMETERS TOLERANCES ARE:	
DECIMALS .X ±12.7	ANGLES ±3°
.XX ±6.4	
DO NOT SCALE DRAWING	

APPROVALS	DATE
DRAWN CUONG P.	5-29-07
CHECKED IAN MORRELL	5-29-07

**CA** CIRCUIT ASSEMBLY CORP.  
3A VANDERBILT, IRVINE, CALIFORNIA 92618-2030

CABLE ASSEMBLY - SATA SERIES  
CA-D07SATAS-XXX-"RoHS"  
WITH R/A LOW PROFILE OVERMOLD

SIZE C	CODE IDENT NO. 52072	DRAWING NO. U709079	REV. E
--------	----------------------	---------------------	--------

SCALE: 2 : 1 SHEET 2 OF 2

4

3

2

1