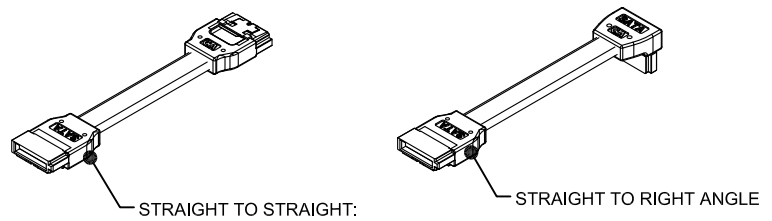
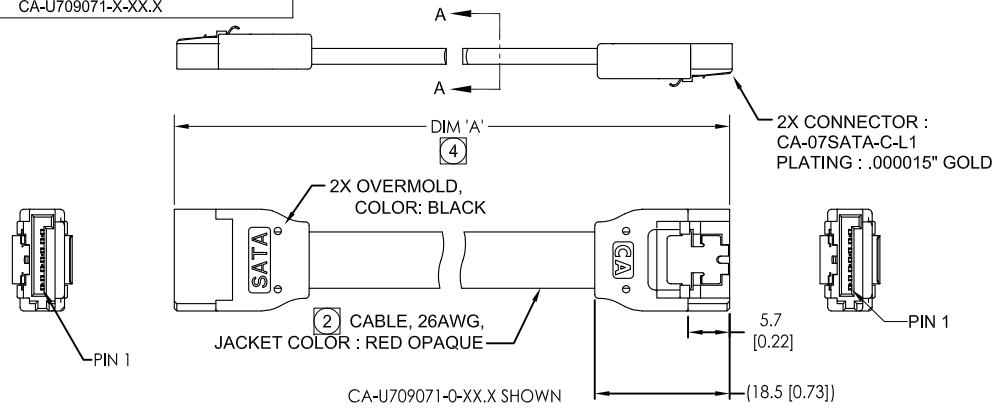


REVISIONS			
LTR	DESCRIPTION	DATE	APPROVED
A	INITIAL RELEASE, SEE DO 6231	C.P. 10-11-06	L.F.
B	SEE DO 6329	C.P. 01-18-07	L.F.
C	SEE DO 6340	C.P. 02-08-07	L.F.
D	SEE DO 6426	C.P. 05-17-07	I.M.
E	SEE DO 7353	C.P. 03-04-16	I.M.
F	SEE DO 7478	C.P. 08-22-18	T.L.

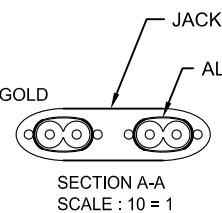
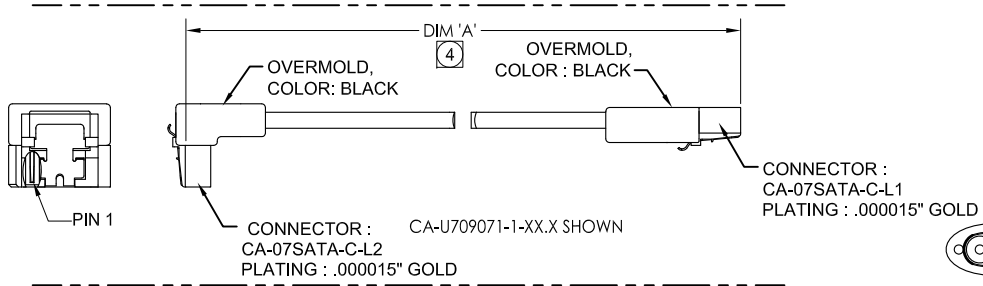
D

D



C

C



ORDERING NOMENCLATURE
CA - U709071 -X- XX.X

LATCHING SATA CABLE ASSEMBLY

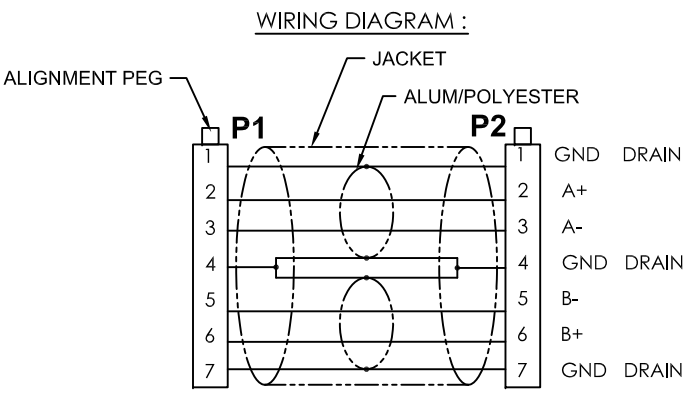
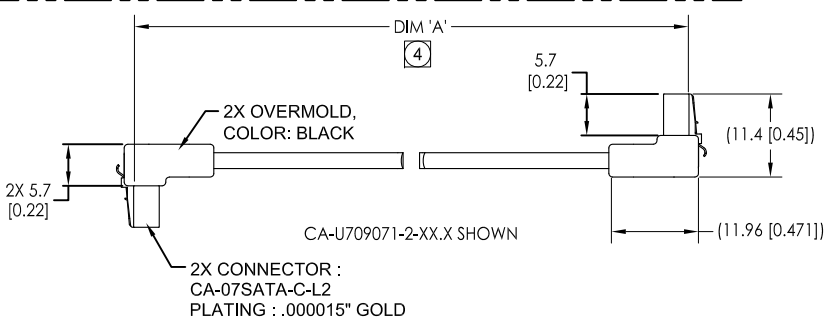
END STYLE

0 = STRAIGHT TO STRAIGHT
 1 = STRAIGHT TO R/ANGLE
 2 = R/ANGLE TO R/ANGLE

LENGTHS
DIM 'A' (METERS) ④
 00.5 = 0.5M ± .025M
 01.0 = 1.0M ± .05M

B

B



6. REFER TO:
 - DWG # 610334 FOR CONNECTOR ASSEMBLY, P/N: CA-07SATA-X-LX-XXX
 - DWG # 640001 FOR OVERMOLD, STRAIGHT, P/N: CA-SATA/OM07-LS, STRAIGHT STYLE, LOW PROFILE
 - DWG # 640003 FOR OVERMOLD, RIGHT ANGLE, P/N: CA-SATA/OM07-LR, RIGHT ANGLE, LOW PROFILE
5. CONSULT WITH CA FACTORY FOR OTHER CONTACT PLATING, OVERMOLD COLORS, CABLE COLORS, OR CABLE LENGTHS(30 AWG)

- ④ CABLE TOLERANCE (SEE ORDERING NOMENCLATURE)
3. MEETS THE REQUIREMENT OF THE SERIAL ATA II STANDARD FOR THE LENGTHS SPECIFIED.

- ② RECOMMENDED SERIAL ATA CABLES:
 -HITACHI CABLE MANCHESTER
 -SPACE SHUTTLE
 -DER AN, OR CAC APPROVED EQUIVALENT
 CABLE MUST BE PRINTED WITH UL STYLE & MFR. FILE NO.

1. MEETS THE REQUIREMENTS OF THE EUROPEAN PARLIAMENT AND THE RESTRICTION OF THE USE OF CERTAIN HAZARDOUS SUBSTANCES IN ELECTRICAL AND ELECTRONIC EQUIPMENT. (RoHS)

NOTES : UNLESS OTHERWISE SPECIFIED

PRIMARY DIMENSIONS ARE IN MILLIMETERS. TOLERANCES ARE: DECIMALS ANGLES .X ±.25 ±3° .XX ±.13	APPROVALS DRAWN CUONG P. CHECKED LEROY FONG	DATE 10-05-06	CIRCUIT ASSEMBLY CORP. 3A VANDERBILT, IRVINE, CALIFORNIA 92618-2030 CABLE ASSEMBLY - LSATA SERIES CA-D07LSATA-XXX LOW PROFILE "RoHS"	
	SECONDARY DIMENSIONS ARE IN INCHES. TOLERANCES ARE: DECIMALS ANGLES .XX ±.010 ±3° .XXX ±.005	SIZE C		CODE IDENT NO. 52072
DO NOT SCALE DRAWING			SCALE: 1:1	SHEET 1 OF 1

A

A