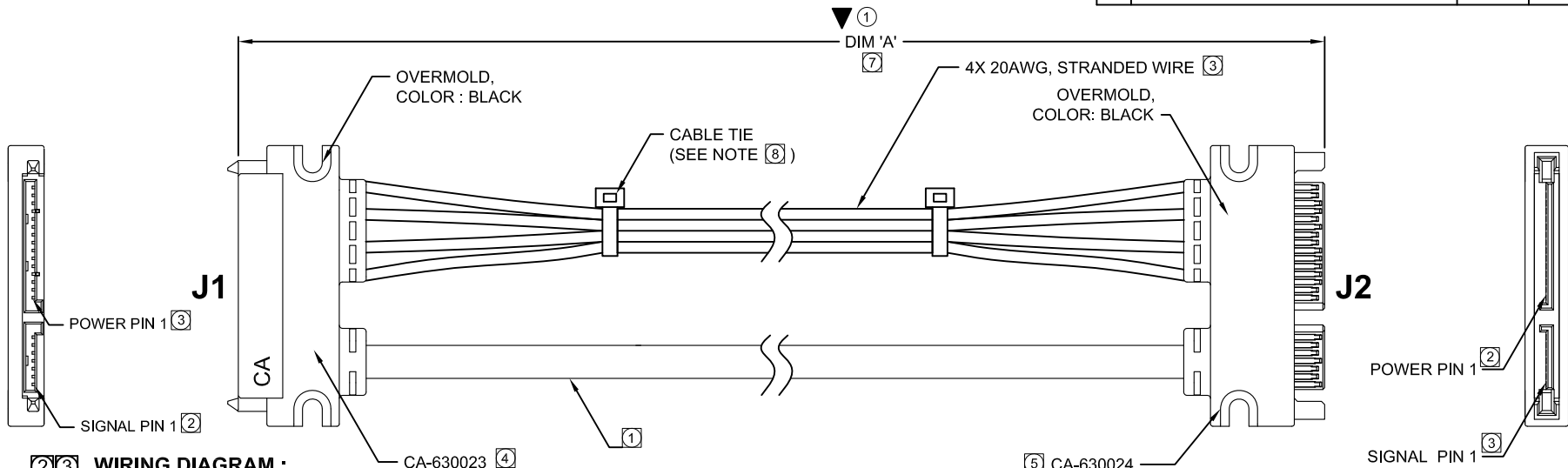
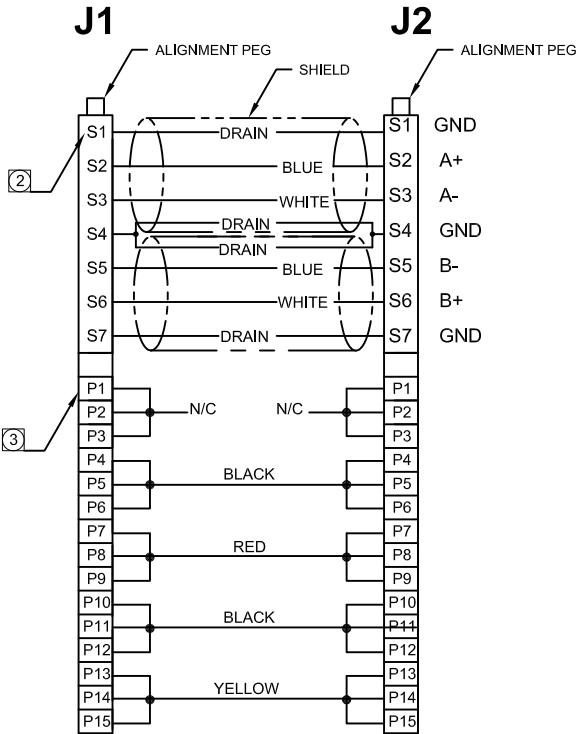


PART NO. CA-U709055-XX.X-X

REVISIONS				
LTR	DESCRIPTION	DATE	APPROVED	
A	INITIAL RELEASE SEE DO 5912	CP 10-24-05	L.F.	
B	SEE DO 6250	CP 10-13-06	I.M.	
C	SEE DO 7138	CP 08-18-11	I.M.	
D	SEE DO 7559	CP 02-25-20	T.L.	



②③ WIRING DIAGRAM :



ORDERING NOMENCLATURE :
CA-U709055 - XX.X-X

SERIAL ATA CABLE ASSEMBLY

LENGTH _____
(DIM 'A' INCHES) ⑦
TOLERANCES ARE :
<6" [.15M] ± .5" [.013M]
>6" [.15M] TO 24" [.61M] ± 1" [.025M]

CABLE COLOR: ①
R = TRANSLUCENT RED
B = TRANSLUCENT BLUE

- ⑨ MARK "▼" DIMENSION MUST BE CONTROLLED. MARK "⊗" IS DIMENSION NO.
- ⑧ - CABLE LENGTH <6.0" [0.15M] HAVE 1 CABLE TIE.
- CABLE LENGTH >6.0" [0.15M] TO 24"[0.61M] HAVE 2 CABLE TIES.
- 6. MEETS THE REQUIREMENTS OF THE EUROPEAN PARLIAMENT AND THE RESTRICTION OF THE USE OF CERTAIN HAZARDOUS SUBSTANCES IN ELECTRICAL AND ELECTRONIC EQUIPMENT. (RoHS)
- ⑤ FOR DETAIL REFER TO DWG. # 630024
- ④ FOR DETAIL REFER TO DWG. # 630023
- ③ POWER WIRING DIAGRAM
- ② SIGNAL WIRING DIAGRAM
- ① USE SERIAL ATA COMPLIANT CABLE, 26AWG APPROVED SOURCES : (SEE ORDERING NOMENCLATURE FOR CABLE COLOR)

- DER AN
OR CA APPROVED EQUIVALENT

NOTES : UNLESS OTHERWISE SPECIFIED

DIMENSIONS ARE IN INCHES TOLERANCES ARE : DECIMALS .XX ± .025 23" .XXX ± .010 DIMENSIONS IN BRACKETS [X.XX] ARE MILLIMETERS TOLERANCES ARE : DECIMALS .X ± .64 23" .XX ± .25 DO NOT SCALE DRAWING	APPROVALS DRAWN CUONG P. CHECKED LEROY FONG	DATE 10-24-05 10-24-05	CIRCUIT ASSEMBLY CORP. 3A VANDERBILT, IRVINE, CALIFORNIA 92618-2030 CABLE ASSEMBLY - SATA SERIES CA-D22SAHS/22SAPP-XX.X-X "ROHS COMPLIANT"	SIZE C CODE IDENT NO. 52072 DRAWING NO. U709055 REV. E
	THE INFORMATION AND DESIGN DISCLOSED HEREIN WAS ORIGINATED BY AND IS THE PROPERTY OF CIRCUIT ASSEMBLY CORPORATION. CIRCUIT ASSEMBLY CORPORATION RESERVES ALL RIGHTS, PROPRIETARY, DESIGN, MANUFACTURING, REPRODUCTION, USE AND SALES RIGHTS THEREIN, AND TO ANY ARTICLE DISCLOSED HEREIN EXCEPT TO THE EXTENT RIGHTS ARE EXPRESSLY GRANTED TO OTHERS. THE FOREGOING DOES NOT APPLY TO VENDOR PROPRIETARY RIGHTS.			