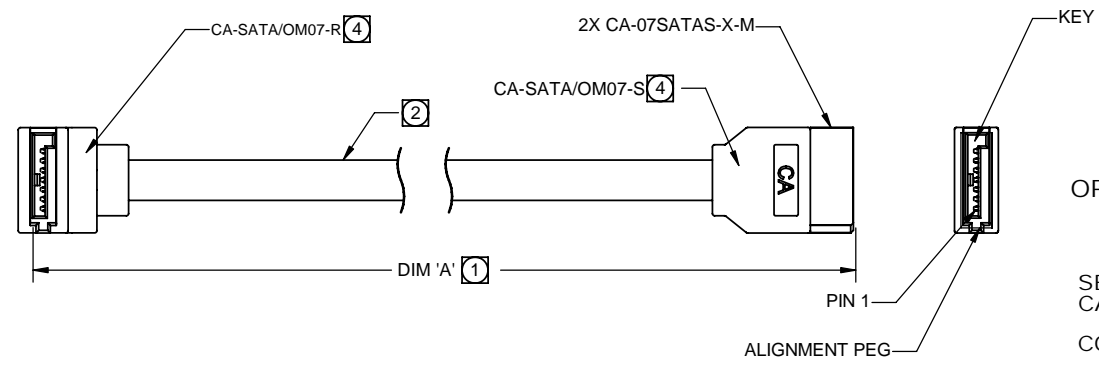


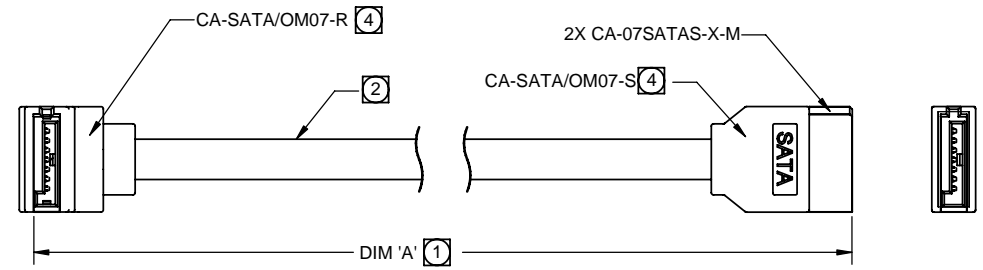
PART NO. CA-U709043-XX-XX-XXX

REVISIONS				
LTR	DESCRIPTION	DATE	APPROVED	
A	INITIAL RELEASE, SEE DO 5763	C.P. 05-04-05	L.F.	
B	SEE DO 5778	C.P. 05-24-05	L.F.	

CA-U709043-1X-0 STRAIGHT TO RIGHT ANGLE (KEY IN) SHOWN



CA-U709043-3X-0 STRAIGHT TO RIGHT ANGLE (KEY OUT) SHOWN



ORDERING NOMENCLATURE

CA - U709043 - X X - X X - XXX

- SERIAL ATA CABLE ASSEMBLY
- CONNECTOR STYLE
- 1 = STRAIGHT TO RIGHT ANGLE (KEY IN)
- 2 = RIGHT ANGLE, SAME DIRECTION
- 3 = STRAIGHT TO RIGHT ANGLE (KEY OUT)
- 4 = RIGHT ANGLE, UP & DOWN (KEY IN)
- 5 = RIGHT ANGLE, UP & DOWN (KEY OUT)

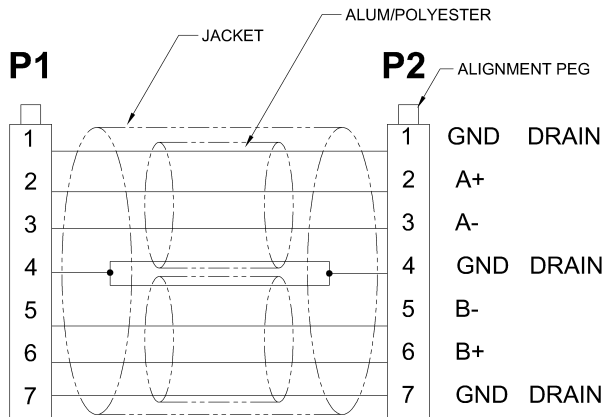
- CONTACT PLATING
- A = GOLD FLASH
- D = .000005" AU
- C = .000015" AU
- F = .000030" AU

- CABLE STYLE AND COLOR
- 0 = 26 AWG RED
- 1 = 30 AWG RED
- 2 = 26 AWG CLEAR
- 3 = 30 AWG CLEAR
- 4 = 26 AWG BLUE
- 5 = 30 AWG BLUE

- OVERMOLD COLOR
- BLANK = BLACK OVERMOLD
- 2 = RED OVERMOLD
- 4 = YELLOW OVERMOLD
- 5 = GREEN OVERMOLD
- 6 = BLUE OVERMOLD
- 9 = CLEAR OVERMOLD

- LENGTH
- DIM 'A'
- UNIT
- BLANK = INCHES
- M = METERS

WIRING DIAGRAM :



- OVERMOLD COLOR (SEE ORDERING NOMENCLATURE)
- VOLTAGE RATING : 30V
- RECOMMENDED SERIAL ATA CABLE SOURCES : HITACHI CABLE MANCHESTER SPACE SHUTTLE DerAn OR CAC APPROVED EQUIVALENT
- TOLERANCE OF CABLE LENGTH :

DIM 'A'	± 'D' IN[M]
0" - 20" [0M - .5M]	1 [.025]
20" - 40" [.5M - 1.0M]	1.5 [.038]

NOTES : UNLESS OTHERWISE SPECIFIED

DIMENSIONS ARE IN INCHES TOLERANCES ARE: DECIMALS .XX ±.50 ANGLES ±3° XXX ±.25	APPROVALS	DATE	CIRCUIT ASSEMBLY CORP. 18 THOMAS ST., IRVINE, CALIFORNIA 92618-2777 CABLE ASSEMBLY - SATA SERIES CA-D07SATA-XXX OVERMOLDED								
	DRAWN CUONG P	05-02-05									
DIMENSIONS IN BRACKETS [X.XX] ARE IN MILLIMETERS TOLERANCES ARE: DECIMALS .X ±.127 ANGLES ±3° XX ±.64	CHECKED LEROY FONG	05-02-05	<table border="1"> <tr> <th>SIZE</th> <th>CODE IDENT NO.</th> <th>DRAWING NO.</th> <th>REV.</th> </tr> <tr> <td>C</td> <td>52072</td> <td>U709043</td> <td>B</td> </tr> </table>	SIZE	CODE IDENT NO.	DRAWING NO.	REV.	C	52072	U709043	B
	SIZE	CODE IDENT NO.	DRAWING NO.	REV.							
C	52072	U709043	B								
DO NOT SCALE DRAWING	SCALE: 2:1		SHEET 1 OF 2								

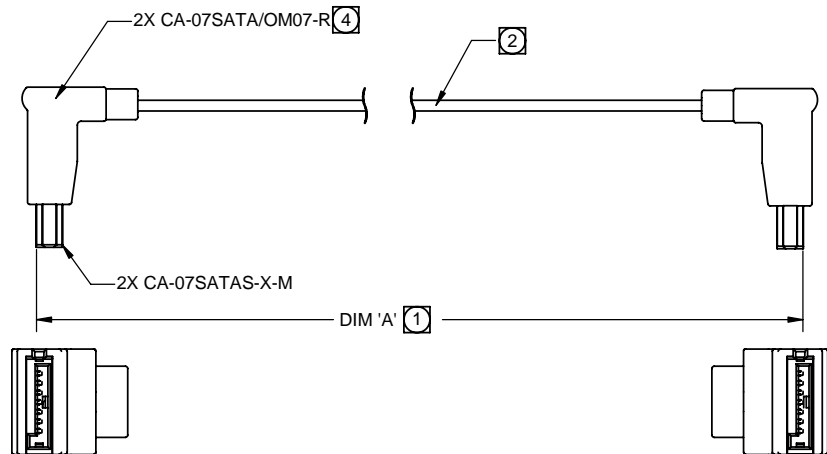
4

3

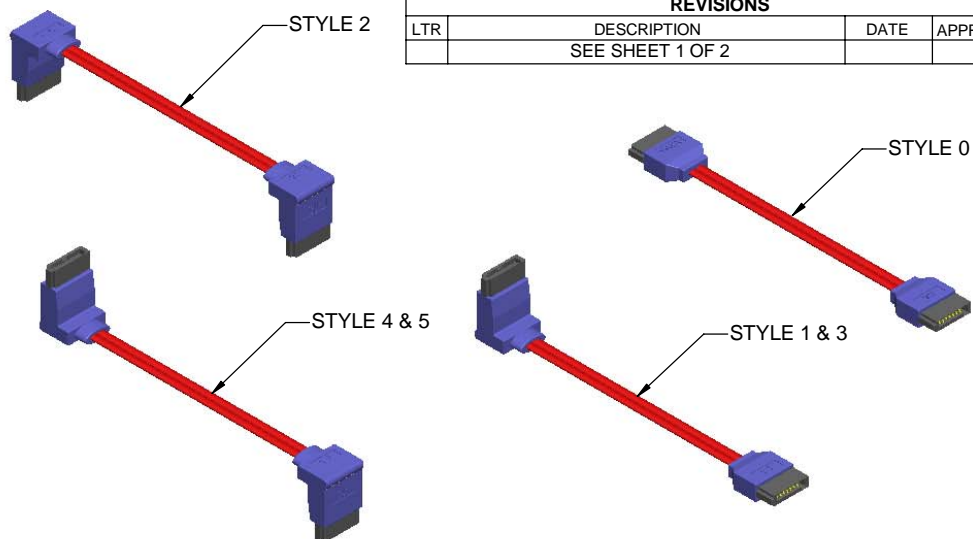
2

1

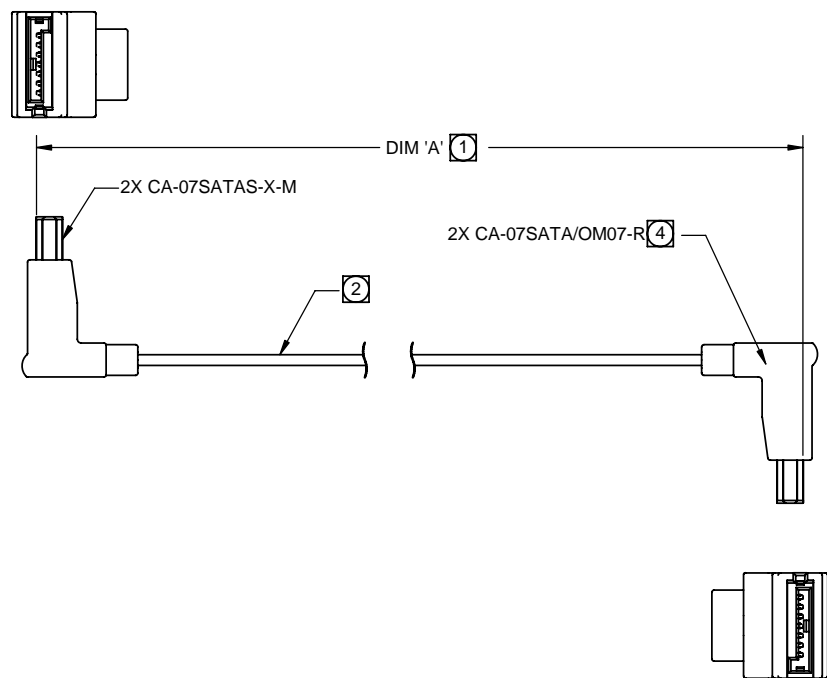
CA-U709043-2X-0 RIGHT ANGLE, SAME DIRECTION SHOWN



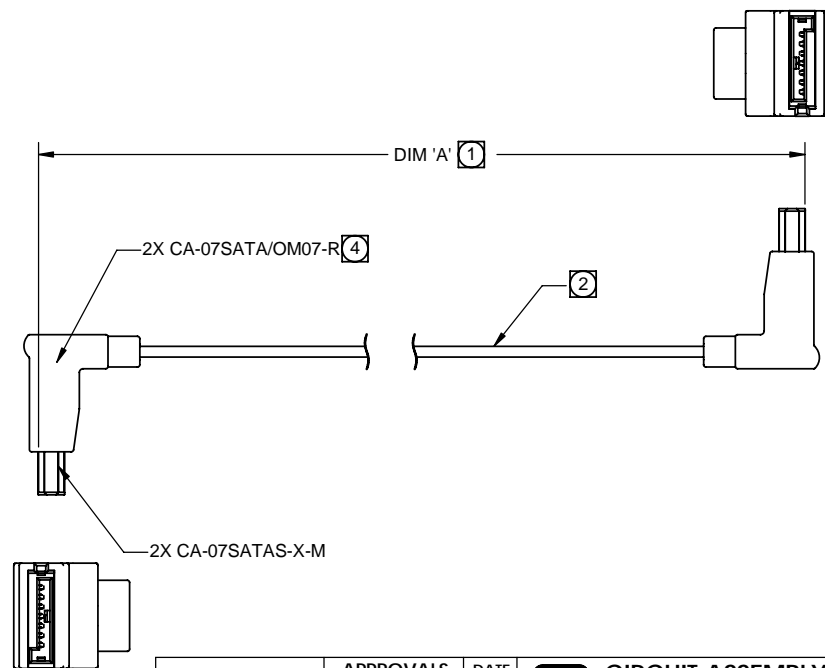
REVISIONS			
LTR	DESCRIPTION	DATE	APPROVED
	SEE SHEET 1 OF 2		



CA-U709043-4X-0 RIGHT ANGLE, UP & DOWN (KEY IN) SHOWN



CA-U709043-5X-0 RIGHT ANGLE, UP & DOWN (KEY OUT) SHOWN



DIMENSIONS ARE IN INCHES
TOLERANCES ARE:
DECIMALS ANGLES
.XX ±.50 ±3°
.XXX ±.25

DIMENSIONS IN BRACKETS
[X.XX] ARE IN MILLIMETERS
TOLERANCES ARE:
DECIMALS ANGLES
.X ±12.7 ±3°
.XX ±6.4

DO NOT SCALE DRAWING

APPROVALS		DATE
DRAWN	CUONG P.	05-02-09
CHECKED	L. FONG	05-02-09

	CIRCUIT ASSEMBLY CORP. 18 THOMAS ST., IRVINE, CALIFORNIA 92618-2777		
	CABLE ASSEMBLY - SATA SERIES CA-D07SATA-XXX OVERMOLDED		
SIZE	CODE IDENT NO.	DRAWING NO.	REV.
C	52072	U709043	B
SCALE: 2 : 1		SHEET 2 OF 2	

4

3

2

1