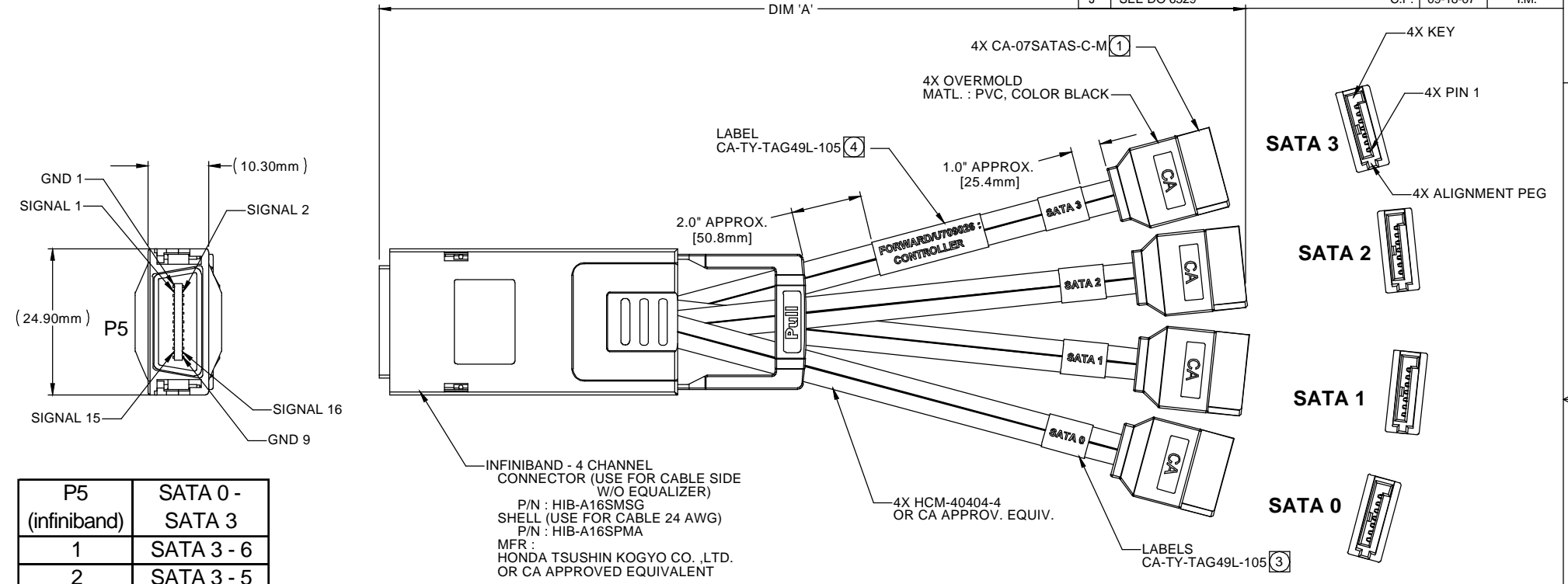


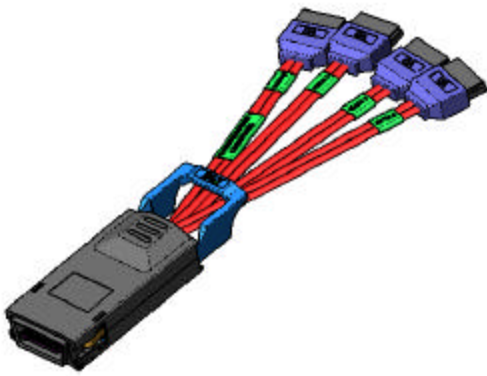
CA - U709026-XX.XX

DIM 'A'
IN INCHES
TOLERANCE : ±1"[25.4mm]
FOR CABLE LENGTH UP 30"[.76M]

REVISIONS				
LTR	DESCRIPTION	DATE	APPROVED	
A	INITIAL RELEASE SEE DO 5437	C.P. 04-07-04	A.J.	
B	SEE DO 5463	C.P. 04-29-04	A.J.	
C	SEE DO 5480	C.P. 05-18-04	A.J.	
D	SEE DO 5512	C.P. 06-14-04	I.M.	
E	SEE DO 5644	C.P. 11-05-04	L.F.	
F	SEE DO 5666	C.P. 12-10-04	I.M.	
G	SEE DO 5703	C.P. 04-05-05	L.F.	
H	SEE DO 6195	C.P. 09-08-06	I.M.	
J	SEE DO 6529	C.P. 09-18-07	I.M.	



P5 (infiniband)	SATA 0 - SATA 3
1	SATA 3 - 6
2	SATA 3 - 5
3	SATA 2 - 6
4	SATA 2 - 5
5	SATA 1 - 6
6	SATA 1 - 5
7	SATA 0 - 6
8	SATA 0 - 5
9	SATA 0 - 3
10	SATA 0 - 2
11	SATA 1 - 3
12	SATA 1 - 2
13	SATA 2 - 3
14	SAT 2 - 2
15	SATA 3 - 3
16	SATA 3 - 2



- 5 MEETS THE REQUIREMENTS OF DIRECTIVE 2002/95/EC OF THE EUROPEAN PARLIAMENT AND OF THE COUNCIL OF 27 JANUARY 2003 ON THE RESTRICTION OF THE USE OF CERTAIN HAZARDOUS SUBSTANCES IN ELECTRICAL AND ELECTRONIC EQUIPMENT. (ROHS)
- 4 APPLY WRAP LABEL .10 APPROX. HIGH CHARACTER, BLACK COLOR AS FOLLOWS :
FORWARD/U709026 : CONTROLLER
- 3 APPLY WRAP LABEL WITH CONNECTOR I.D. AS SHOWN.
- 2 SEE SHEET 2 OF 2 FOR WIRING DIAGRAM
- 1 REFER TO CA DWG. NO. T610110 FOR CONNECTOR ASSEMBLY.

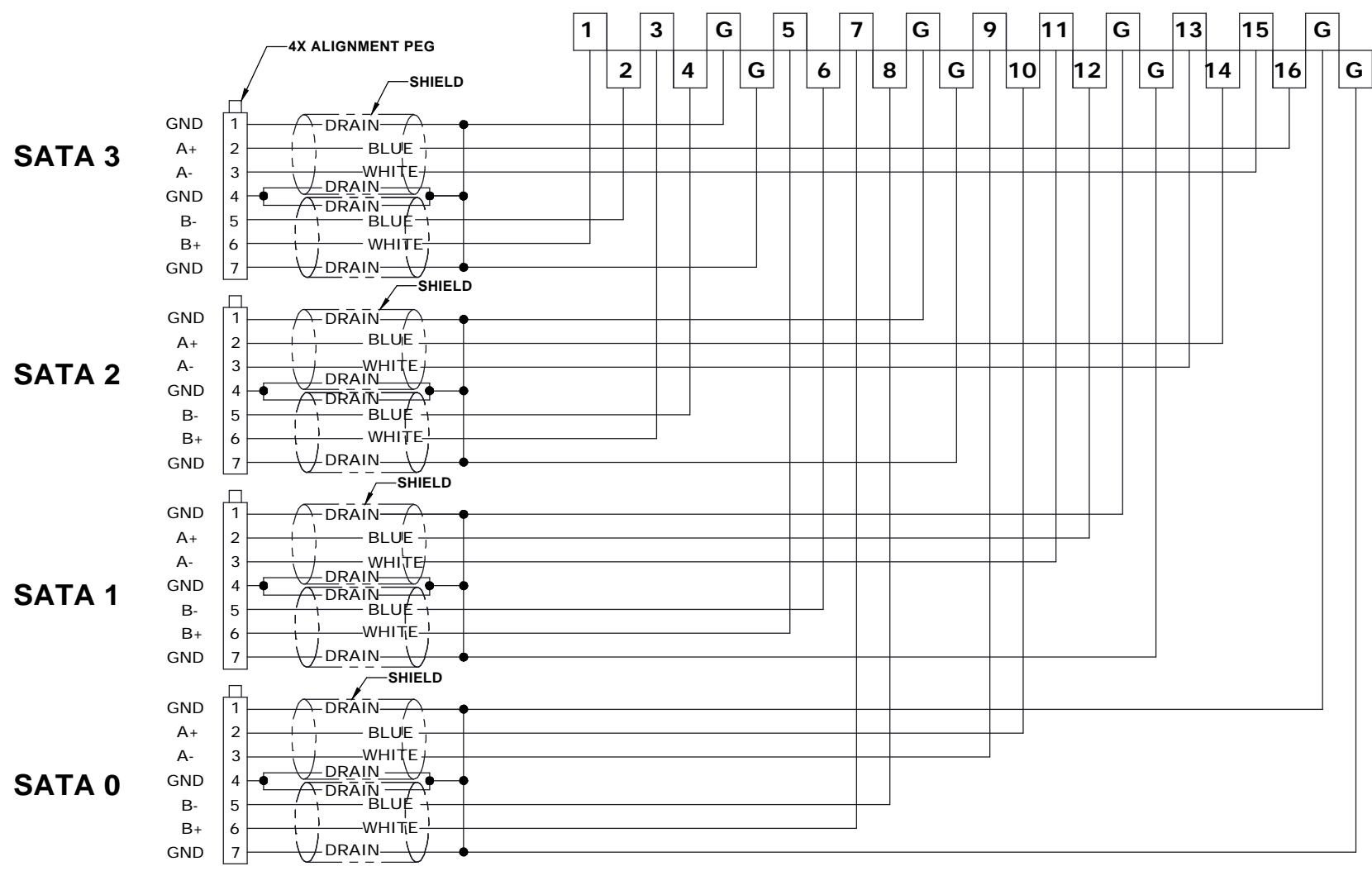
NOTES : UNLESS OTHERWISE SPECIFIED

DIMENSIONS ARE IN INCHES TOLERANCES ARE: DECIMALS ANGLES .XX ± .XXX ±	APPROVALS	DATE	CIRCUIT ASSEMBLY CORP. 18 THOMAS ST., IRVINE, CALIFORNIA 92618-2777 CABLE ASSEMBLY - SATA SERIES INFINIBAND 4X TO SATA, FORWARD BREAKOUT CABLE "ROHS COMPLIANT"								
	DRAWN CUONG P.	04-01-04									
DIMENSIONS IN BRACKETS [X.XX] ARE IN MILLIMETERS TOLERANCES ARE: DECIMALS ANGLES .X ± .XX ±	CHECKED A. JOCHEN	04-01-04	<table border="1"> <tr> <td>SIZE</td> <td>CODE IDENT NO.</td> <td>DRAWING NO.</td> <td>REV.</td> </tr> <tr> <td>C</td> <td>52072</td> <td>U709026</td> <td>J</td> </tr> </table>	SIZE	CODE IDENT NO.	DRAWING NO.	REV.	C	52072	U709026	J
	SIZE	CODE IDENT NO.		DRAWING NO.	REV.						
C	52072	U709026	J								
DO NOT SCALE DRAWING	SCALE: 2:1		SHEET 1 OF 2								

REVISIONS			
LTR	DESCRIPTION	DATE	APPROVED
	SEE SHEET 1 OF 2		

2 WIRING DIAGRAM :

P5 (PCB PAD NUMBER)



DIMENSIONS ARE IN INCHES TOLERANCES ARE: DECIMALS ANGLES .XX .XXX	APPROVALS	DATE	CA CIRCUIT ASSEMBLY CORP. 18 THOMAS ST., IRVINE, CALIFORNIA 92618-2777
	DRAWN CUONG P.	04-01-04	
DIMENSIONS IN BRACKETS [X.XX] ARE IN MILLIMETERS TOLERANCES ARE: DECIMALS ANGLES .X .XX	CHECKED A. JOCHEN	04-01-04	CABLE ASSEMBLY - SATA SERIES INFINIBAND 4X TO SATA, FORWARD BREAKOUT CABLE "ROHS COMPLIANT"
	THE INFORMATION AND DESIGN DISCLOSED HEREIN WAS ORIGINATED BY AND IS THE PROPERTY OF CIRCUIT ASSEMBLY CORPORATION. CIRCUIT ASSEMBLY CORPORATION RESERVES ALL PATENT, PROPRIETARY, DESIGN, MANUFACTURING, REPRODUCTION, USE AND SALES RIGHTS THEREBY, AND TO ANY ARTICLES DISCLOSED HEREIN EXCEPT TO THE EXTENT RIGHTS ARE EXPRESSLY GRANTED TO OTHERS. THE FOREGOING DOES NOT APPLY TO VENDOR PROPRIETARY RIGHTS.		
DO NOT SCALE DRAWING	SIZE C	CODE IDENT NO. 52072	DRAWING NO. U709026
	SCALE: 2 : 1		REV. J
			SHEET 2 OF 2