

4

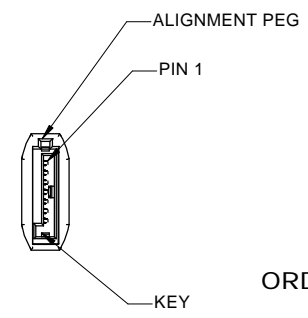
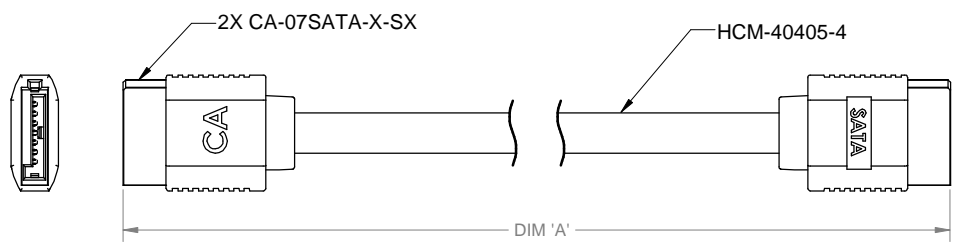
3

2

1

PART NO. CA-U709003-XX-X-XX

CA-U709003-0X -0 STRAIGHT, BOTH ENDS SHOWN



REVISIONS				
LTR	DESCRIPTION	DATE	APPROVED	
A	INITIAL RELEASE, SEE DO 4992	C.P. 10-03-02	A.J.	
B	SEE DO 5040	C.P. 12-05-02	A.J.	
C	SEE DO 5106	C.P. 02-26-03	A.J.	

ORDERING NOMENCLATURE

CA - U709003 -X X - X - XX

SERIAL ATA CABLE ASSEMBLY _____

CONNECTOR STYLE _____

0 = STRAIGHT, BOTH ENDS
 1 = STRAIGHT TO RIGHT ANGLE (KEY IN)
 2 = RIGHT ANGLE, SAME DIRECTION
 3 = STRAIGHT TO RIGHT ANGLE (KEY OUT)
 4 = RIGHT ANGLE, UP & DOWN (KEY IN)
 5 = RIGHT ANGLE, UP & DOWN (KEY OUT)

CONTACT PLATING _____

A = GOLD FLASH
 D = .000005" AU
 C = .000015" AU
 F = .000030" AU

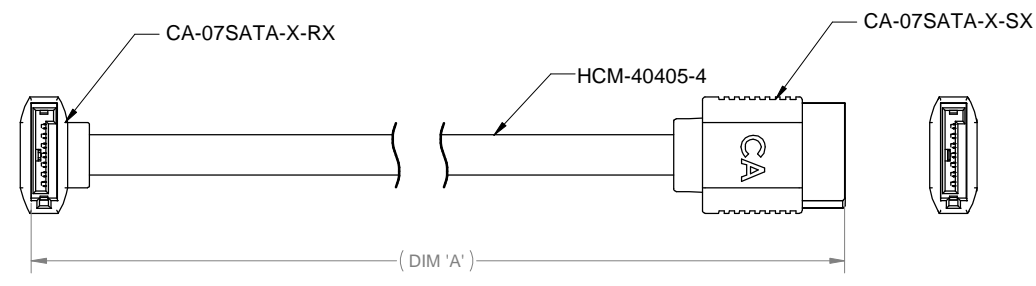
CABLE TYPE _____

0 = 26 AWG
 1 = 30 AWG
 FOR OTHER CABLE STYLE CONSULT FACTORY

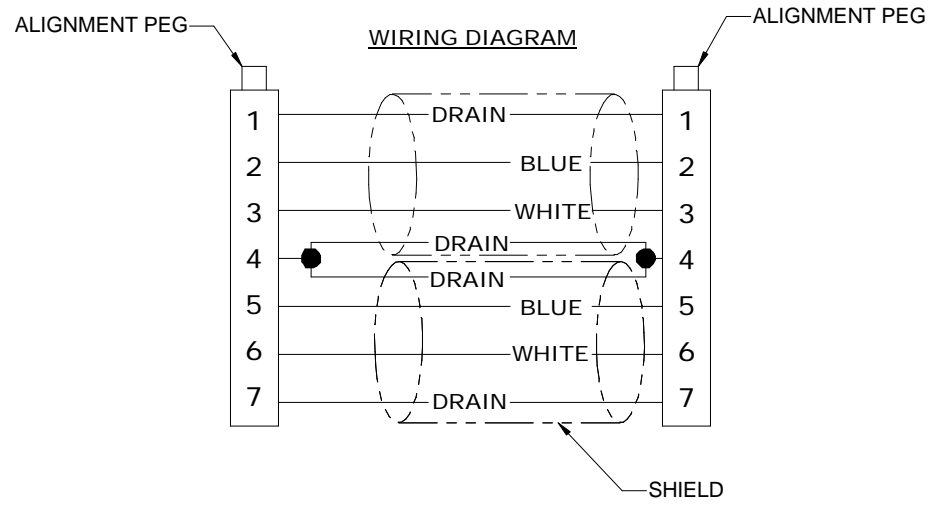
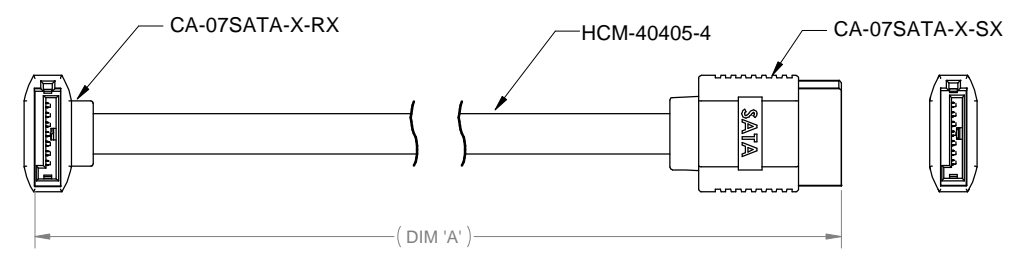
LENGTH _____

DIM 'A' IN INCHES _____

CA-U709003-1X-0 STRAIGHT TO RIGHT ANGLE (KEY IN) SHOWN



CA-U709003-3X-0 STRAIGHT TO RIGHT ANGLE (KEY OUT) SHOWN



2. TOLERANCE: ±1" FOR CABLE LENGTH UP TO 30"

1. REFER TO CA DWG. NO. 610276 & DWG. NO. 610289 FOR CONNECTOR ASSEMBLY

NOTES : UNLESS OTHERWISE SPECIFIED

DIMENSIONS ARE IN INCHES TOLERANCES ARE:		APPROVALS	DATE
DECIMALS	ANGLES	DRAWN CUONG P.	10-03-02
.XX ±.50	±3°	CHECKED A. JOCHEN	10-03-02
.XXX ±.25		THE INFORMATION AND DESIGN DISCLOSED HEREIN WAS ORIGINATED BY AND IS THE PROPERTY OF CIRCUIT ASSEMBLY CORPORATION. CIRCUIT ASSEMBLY CORPORATION RESERVES ALL PATENT, PROPRIETARY, DESIGN, MANUFACTURING, REPRODUCTION, USE AND SALES RIGHTS THERE TO, AND TO ANY ARTICLES DISCLOSED HEREIN EXCEPT TO THE EXTENT RIGHTS ARE EXPRESSLY GRANTED TO OTHERS. THE FOREGOING DOES NOT APPLY TO VENDOR PROPRIETARY RIGHTS.	
DIMENSIONS IN BRACKETS TOLERANCES ARE:		SIZE CODE IDENT NO. DRAWING NO. REV.	
DECIMALS	ANGLES	C 52072	U709003 C
.X ±		SCALE: 2:1 SHEET 1 OF 2	
.XX ±			

CA CIRCUIT ASSEMBLY CORP.
 18 THOMAS ST., IRVINE, CALIFORNIA 92618-2777

**CABLE ASSEMBLY
 SATA SERIES (WITH BOOT)**

4

3

2

1

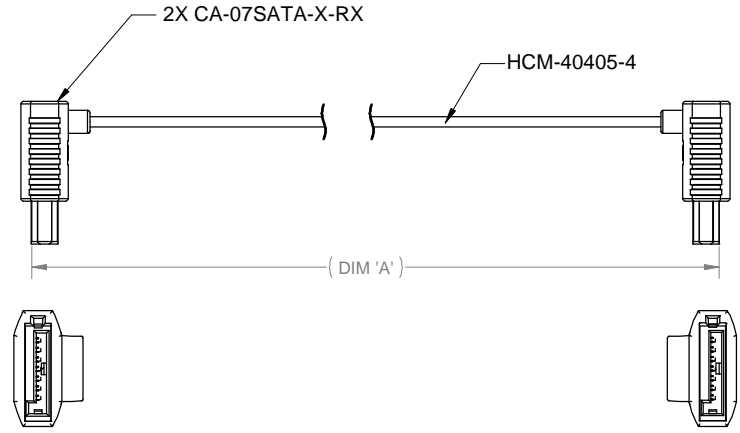
4

3

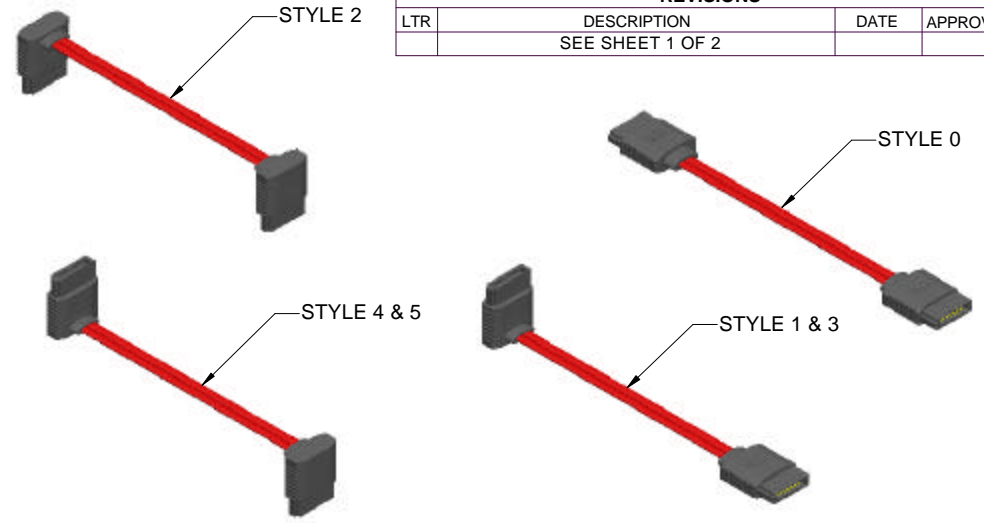
2

1

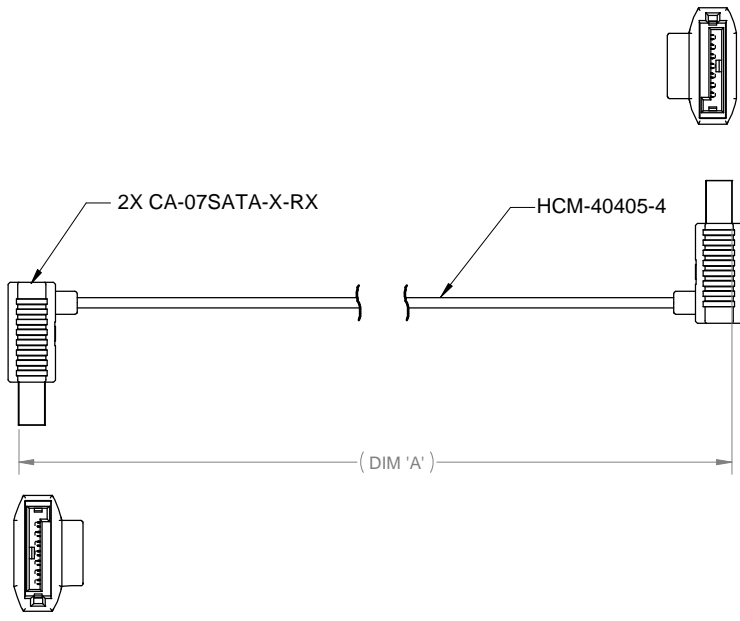
CA-U709003-2X-0 RIGHT ANGLE, SAME DIRECTION SHOWN



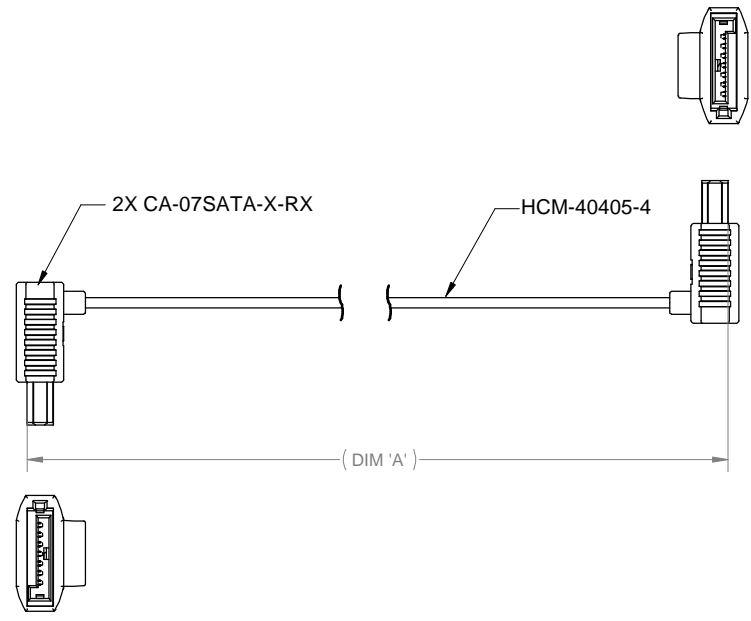
REVISIONS			
LTR	DESCRIPTION	DATE	APPROVED
	SEE SHEET 1 OF 2		



CA-U709003-4X-0 RIGHT ANGLE, UP & DOWN (KEY IN) SHOWN



CA-U709003-5X-0 RIGHT ANGLE, UP & DOWN (KEY OUT) SHOWN



DIMENSIONS ARE IN INCHES TOLERANCES ARE: DECIMALS ANGLES .XX ±.50 ±3° .XXX ±.25 DIMENSIONS IN BRACKETS [X.XX] ARE IN MILLIMETERS TOLERANCES ARE: DECIMALS ANGLES .X ± .XX ±	APPROVALS DRAWN CUONG P. CHECKED A. JOCHEN	DATE 10-03-02 10-03-02	CIRCUIT ASSEMBLY CORP. 18 THOMAS ST., IRVINE, CALIFORNIA 92618-2777 CABLE ASSEMBLY SATA SERIES (WITH BOOT)	SIZE C	CODE IDENT NO. 52072	DRAWING NO. U709003	REV. C
	DO NOT SCALE DRAWING	THE INFORMATION AND DESIGN DISCLOSED HEREIN WAS ORIGINATED BY AND IS THE PROPERTY OF CIRCUIT ASSEMBLY CORPORATION. CIRCUIT ASSEMBLY CORPORATION RESERVES ALL PATENT, PROPRIETARY, DESIGN, MANUFACTURING, REPRODUCTION, USE AND SALES RIGHTS THERE TO, AND TO ANY ARTICLE DISCLOSED HEREIN EXCEPT TO THE EXTENT RIGHTS ARE EXPRESSLY GRANTED TO OTHERS. THE FOREGOING DOES NOT APPLY TO VENDOR PROPRIETARY RIGHTS.		SCALE: 2 : 1	SHEET 2 OF 2		

4

3

2

1