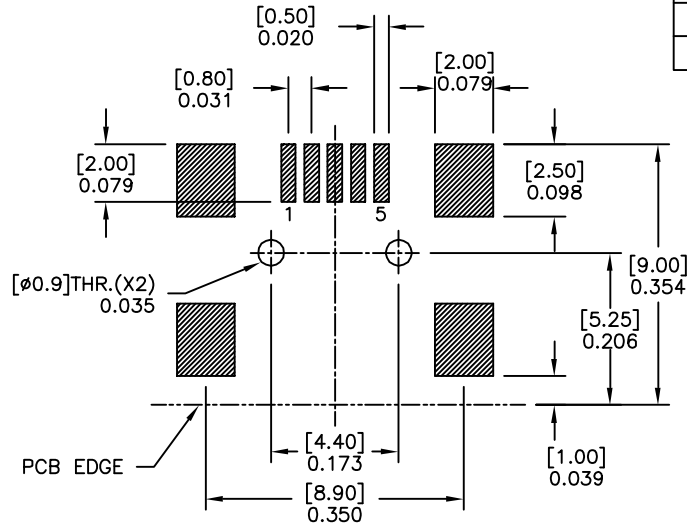
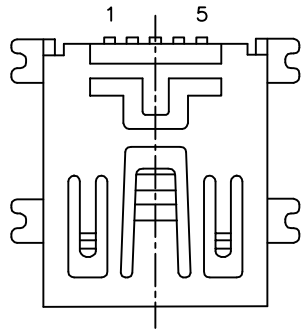
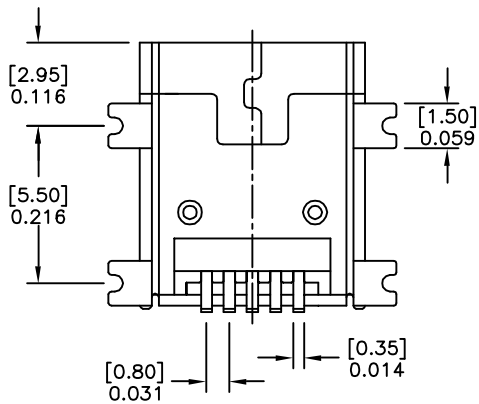
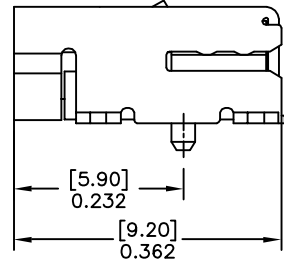
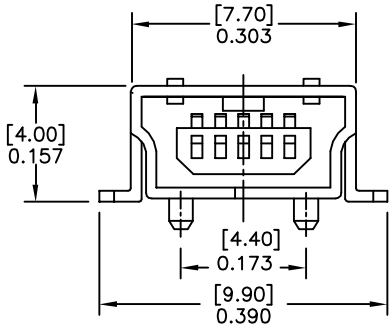


PART NO. CA-05MUSBSR-XX-XXX-X

REVISIONS			
LTR	DESCRIPTION	DATE	APPROVED
A	INITIAL RELEASE SEE ECN E9008005	08/06/'01	Jesse Mol
B	SEE ECN E9103043	03/21/'02	William Wu



Recommend PCB Layout (Component Side)



NOTER:UNLESS OTHERWISE SPECIFIED  
1.ORDER INFORMATION

CA-05MUSBSR-SX-XXX-X

NO. OF POSITION

SERIES NUMBER

MUSBSAR1=MINI USB SOCKET.R/A  
SINGLE ROW

PCB LAYOUT PROFILE

S=SMT

PALTING

A=GOLD FLASH CONTACT AREA.TIN TERMINATION AREA  
C=15u" GOLD FLASH CONTACT AREA.TIN TERMINATION AREA  
F=30u" GOLD FLASH CONTACT AREA.TIN TERMINATION AREA

COLOR

BLK=BLACK  
BLU=BLUE  
WHT=WHITE

CONFIGURATION OR OPTION (ADD IF REQUIRED)

2.SPECIFICATIONS

ENVIRONMENTAL

TEMPERATURE RANGE:-55°C TO +105°C

MATERIAL

INSULATOR MATERIAL:NYLON6T GLASS FIBRE REINFORCED UL94V-0

SHELL:BRASS

CONTACT:PHOSPHOR BRONZE

ELECTRICAL

CUPPOINT RATING:1AMP

VOLTAGE RATING:30V AC

INSULATION RESISTANCE:100M MIN

WITHSTANDING VOLTAGE:100V AC

DIMENSIONS ARE IN INCH TOLERANCES ARE: DECIMALS ANGLES .XX ± .010 ± 3' .XXX ± .005	DRAWN	<b>CIRCUIT ASSEMBLY CORP</b> 18 THOMAS ST., IRVINE, CALIFORNIA 92618-2777	TITLE. CONN ASS'Y SOCKET R/A MINI USB SERIES						
	CHECKED								
DIMENSIONS IN BRACKETS [X.XX] ARE IN MILLIMETERS TOLERANCES ARE: DECIMALS ANGLES .X ± .25 ± 3' .XXX ± .13	APPROVALS	<table border="1"> <tr> <td>SIZE</td> <td rowspan="2"> </td> <td>DRAWING NO.</td> <td>REV.</td> </tr> <tr> <td>C A4</td> <td>T517004</td> <td>B</td> </tr> </table>	SIZE		DRAWING NO.	REV.	C A4	T517004	B
	SIZE				DRAWING NO.	REV.			
C A4	T517004	B							
DO NOT SCALE DRAWING	THE INFORMATION AND DESIGN DISCLOSED HEREIN WAS ORIGINATED BY AND IS THE PROPERTY OF CIRCUIT ASSEMBLY CORPORATION. CIRCUIT ASSEMBLY CORPORATION RESERVES ALL PATENT, PROPRIETARY, DESIGN, MANUFACTURING, REPRODUCTION, USE AND SALES RIGHTS THERETO, AND TO ANY ARTICLE DISCLOSED HEREIN EXCEPT TO THE EXTENT RIGHTS ARE EXPRESSLY GRANTED TO OTHERS. THE FOREGOING DOES NOT APPLY TO VENDOR PROPRIETARY RIGHTS.	SCALE: 5/1	SHEET: 1 OF 1	FILE PATH:F:\..\T517004					