

REV.	DESCRIPTION	DATE	APPD.
A	NEW RELEASE,SEE DO:H4836	06/01/11'	Ray
B	ADD CABLE SIZE, SEE DO:H4870	11/04/11'	Ray
C	SEE DO :H5109	Jason 3/22/12'	Ray

ORDERING NOMENCLATURE :

CA-01AESPL-XXX

ALTERNATIVE ENERGY SOLAR PLUG LOCKING

CABLE SIZE

- 1= 2.5mm²(OPTION) 4=14AWG (OPTION) 7= 2.5mm² & 14AWG (STANDARD)
- 2= 4.0mm²(OPTION) 5=12AWG (OPTION) 8= 4.0mm² & 12AWG (STANDARD)
- 3= 6.0mm²(OPTION) 6=10AWG (OPTION) 9= 6.0mm² & 10AWG (STANDARD)

① MARK (POLARITY)

- 1= PLUS WITH MARK "+" (OPTION).
- 2= MINUS WITH MARK "-" (STANDARD).

CONTACT

- 1= HAVE CONTACT(UNASSEMBLED)(SEE NOTE 2)
- 2= NO CONTACT

NOTES:

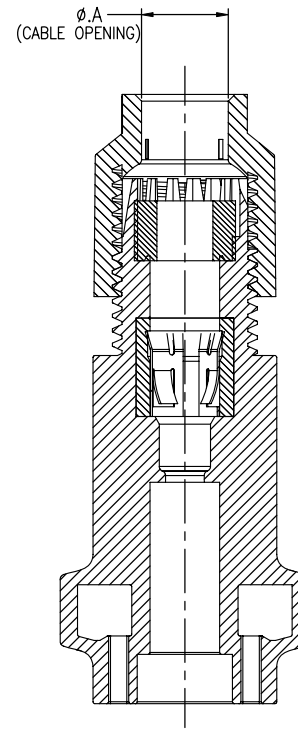
- MATERIAL :
HOUSING&COVER : HIGH TEMPERATURE THERMOPLASTIC PPO PX9406P, UL94V-0, COLOR : BLACK
WATERPROOF RING: SILICON STE221-3U, COLOR: BLACK
RETENTION SUPPORT : SUS304.
CONTACT : COPPER ALLOY.
- APPLICABLE CONTACT IS SHIPPED UNASSEMBLED, PACKAGED WITH REEL.

ITEM	P/N	CONDUCTOR CROSS AREA	DWG NO.
1	AESP/T-1-1	2.5mm ² /14AWG	H011303
2	AESP/T-2-1	4.0~6.0mm ² /12~10AWG	

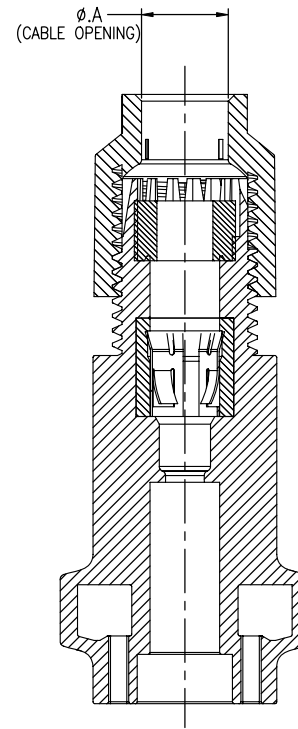
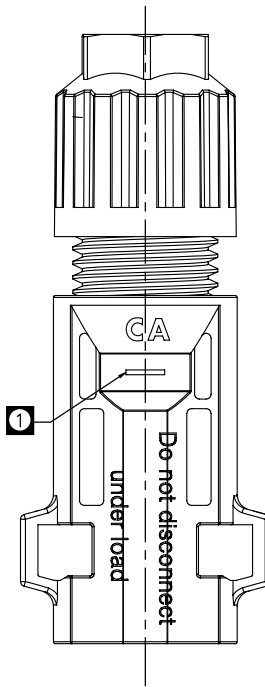
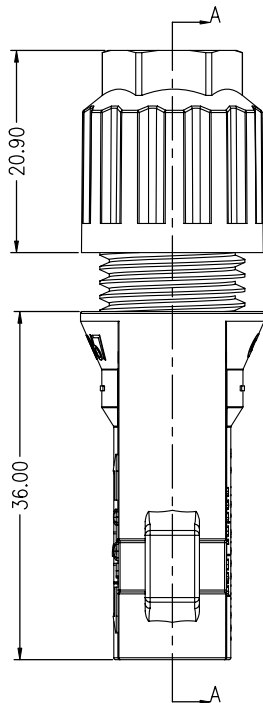
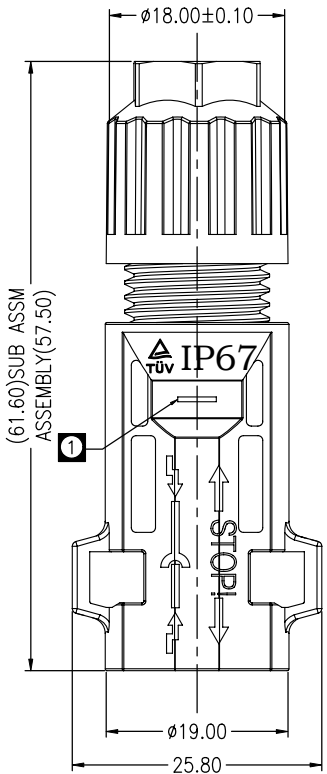
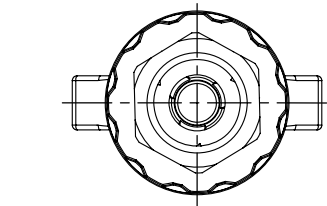
3. A TOOL IS REQUIRED TO WRENCH/ASSEMBLY/UNLOCK.

ITEM	P/N	DWG NO.
1	AESL-T2	H010438

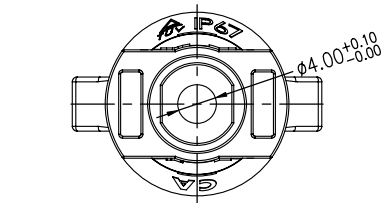
- MARK ▼ DIMENSION MUST CONTROL
- UL and TUV IS PENDING.
- ALL DIMENSION MEASURE BY FAI
- MEETS THE REQUIREMENTS OF DIRECTIVE 2002/95/EC OF THE EUROPEAN PARLIAMENT AND OF THE COUNCIL OF 27 JANUARY 2003 ON THE RESTRICTION OF THE USE OF CERTAIN HAZARDOUS SUBSTANCES IN ELECTRICAL AND ELECTRONIC EQUIPMENT(ROHS)



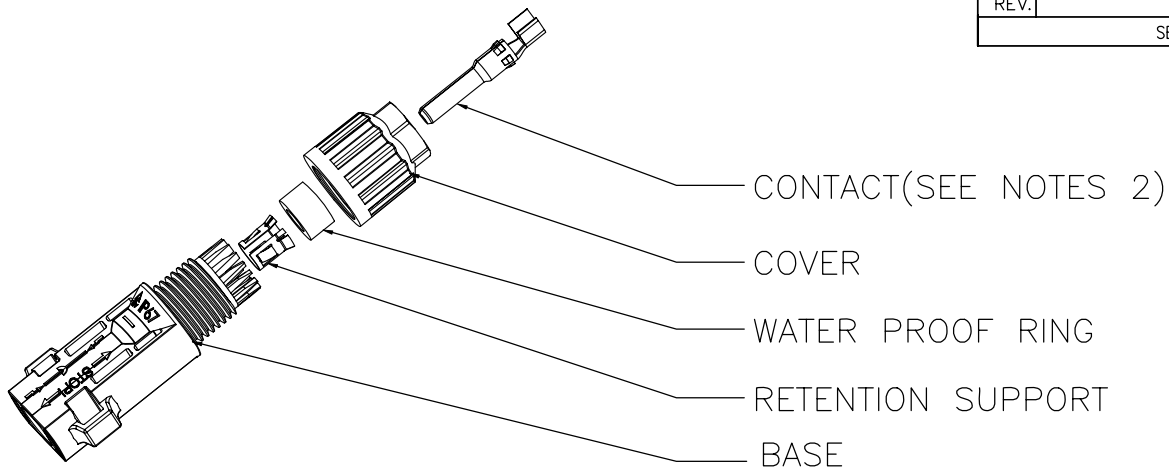
SECTION A-A



SECTION A-A



MILLIMETERS	INCH	UNITS	MM	NAME(INTENDED USE)	CIRCUIT ASSEMBLY SHENZHEN CA INDUSTRIAL BUILDING, AOXING ROAD, AOBEL SECOND VILLAGE, HENGANG TOWN, SHENZHEN CITY, GUANGDONG, PROVINCE, CHINA.
X° ± 2'	X° ± 2'	MAT'L		PART NO.(INTENDED USE)	
.X ± 0.20	.X ± .008	SEE NOTES		CA-01AESPL-XXX	ASSEMBLY DRAWING FOR ALTERNATIVE ENERGY SOLAR PLUG LOCKING CONNECTOR(ROHS)
.XX ± 0.15	.XX ± .006	FINISH		APPD:	DWG NO.:
.XXX ± 0.10	.XXX ± 0.004	SEE NOTES		Ray 06/01/11'	H629003
THESE DRAWINGS AND SPECIFICATIONS ARE THE PROPERTY OF CIRCUIT ASSEMBLY SHEN ZHEN AND SHALL NOT BE REPRODUCED. COPIED OR USED IN ANY MANNER WITHOUT THE PRIOR WRITTEN CONSENT OF CIRCUIT ASSEMBLY SHEN ZHEN				CHKD:	SCALE
				John 06/01/11'	1/1
				DR: Hifong 06/01/11'	SHEET
				REV.	
				c	



ITEM	CONNECTOR P/N:	BASE P/N:	CONTACT P/N:	WATER PROOF RING P/N:	RETENTION SUPPORT P/N:	COVER P/N:	RECOMMEND WIRE JACKET SIZE(OD)		
1	CA-01AESPL-111	AESP/B-1-1	AESP/T-1-T	AES/R002	AES/S	AES/C-2 ($\phi A=7.40$)	14AWG(OD: 5.9±0.20mm)		
2	CA-01AESPL-112		AESP/T-1-T						
3	CA-01AESPL-121	AESP/B-1-2	AESP/T-1-T						
4	CA-01AESPL-122		AESP/T-1-T						
5	CA-01AESPL-131	AESP/B-1-3	AESP/T-1-T						
6	CA-01AESPL-132		AESP/T-1-T						
7	CA-01AESPL-211	AESP/B-1-1	AESP/T-2-T	AES/R003		AES/S	AES/C-2 ($\phi A=7.40$)	12AWG(OD: 6.4±0.30mm)	
8	CA-01AESPL-212		AESP/T-2-T						
9	CA-01AESPL-221	AESP/B-1-2	AESP/T-2-T						
10	CA-01AESPL-222		AESP/T-2-T						
11	CA-01AESPL-231	AESP/B-1-3	AESP/T-2-T						
12	CA-01AESPL-232		AESP/T-2-T						
13	CA-01AESPL-311	AESP/B-2-1	AESP/T-2-T	AES/R005			AES/S	AES/C-1 ($\phi A=8.90$)	10AWG(OD: 7.0±0.30mm)
14	CA-01AESPL-312		AESP/T-2-T						
15	CA-01AESPL-321	AESP/B-2-2	AESP/T-2-T						
16	CA-01AESPL-322		AESP/T-2-T						
17	CA-01AESPL-331	AESP/B-2-3	AESP/T-2-T						
18	CA-01AESPL-332		AESP/T-2-T						

TO BE CONTINUED

MILLIMETERS	INCH	UNITS	MM	NAME(INTENDED USE)	CIRCUIT ASSEMBLY SHENZHEN <small>CA INDUSTRIAL BUILDING, AOXING ROAD, AOBEL SECOND VILLAGE, HENGANG TOWN, SHENZHEN CITY, GUANGDONG, PROVINCE, CHINA.</small>						
X° ± 2'	X° ± 2'	MAT'L		PART NO.(INTENDED USE)							
.X ± 0.20	.X ± .008	SEE NOTES		CA-01AESPL-XXX							
.XX ± 0.15	.XX ± .006	FINISH		APPD: Ray 06/01/11'							
.XXX ± 0.10	.XXX ± 0.004	SEE NOTES		CHKD: John 06/01/11'	DWG NO.: H629003						
THESE DRAWINGS AND SPECIFICATIONS ARE THE PROPERTY OF CIRCUIT ASSEMBLY SHEN ZHEN AND SHALL NOT BE REPRODUCED. COPIED OR USED IN ANY MANNER WITHOUT THE PRIOR WRITTEN CONSENT OF CIRCUIT ASSEMBLY SHEN ZHEN				Q'TY	DR: Hifong 06/01/11'						
					<table border="1" style="font-size: 8px;"> <tr> <td>SCALE</td> <td>SHEET</td> <td>REV.</td> </tr> <tr> <td>1/1</td> <td>2/4</td> <td>c</td> </tr> </table>	SCALE	SHEET	REV.	1/1	2/4	c
SCALE	SHEET	REV.									
1/1	2/4	c									

ITEM	CONNECTOR P/N:	BASE P/N:	CONTACT P/N:	WATER PROOF RING P/N:	RETENTION SUPPORT P/N:	COVER P/N:	RECOMMEND WIRE JACKET SIZE(OD)	
19	CA-01AESPL-411	AESP/B-1-1	AESP/T-1-T	AES/R009	AES/S	AES/C-2 ($\phi A=7.40$)	14AWG(OD: 5.9±0.20mm)	
20	CA-01AESPL-412		/					
21	CA-01AESPL-421		AESP/T-1-T					
22	CA-01AESPL-422	/						
23	CA-01AESPL-431	AESP/T-1-T						
24	CA-01AESPL-432	/						
25	CA-01AESPL-511	AESP/B-1-1	AESP/T-2-T	AES/R006		AES/S	AES/C-2 ($\phi A=7.40$)	12AWG(OD: 6.4±0.30mm)
26	CA-01AESPL-512		/					
27	CA-01AESPL-521		AESP/T-2-T					
28	CA-01AESPL-522	/						
29	CA-01AESPL-531	AESP/T-2-T						
30	CA-01AESPL-532	/						
31	CA-01AESPL-611	AESP/B-2-1	AESP/T-2-T	AES/R007	AES/S		AES/C-1 ($\phi A=8.90$)	10AWG(OD: 7.0±0.30mm)
32	CA-01AESPL-612		/					
33	CA-01AESPL-621		AESP/T-2-T					
34	CA-01AESPL-622	/						
35	CA-01AESPL-631	AESP/T-2-T						
36	CA-01AESPL-632	/						

TO BE CONTINUED

MILLIMETERS	INCH	UNITS	MM	NAME(INTENDED USE)	CIRCUIT ASSEMBLY SHENZHEN <small>CA INDUSTRIAL BUILDING, AOXING ROAD, AOBEL SECOND VILLAGE, HENGANG TOWN, SHENZHEN CITY, GUANGDONG, PROVINCE, CHINA.</small>		
X° ± 2'	X° ± 2'	MAT'L		PART NO.(INTENDED USE)			
.X ± 0.20	.X ± .008	SEE NOTES		CA-01AESPL-XXX	TITLE:		
.XX ± 0.15	.XX ± .006	FINISH		APPD: Ray 06/01/11'	ASSEMBLY DRAWING FOR ALTERNATIVE ENERGY SOLAR PLUG LOCKING CONNECTOR(RoHS)		
.XXX ± 0.10	.XXX ± 0.004	SEE NOTES		CHKD: John 06/01/11'	DWG NO.:		
<small>THESE DRAWINGS AND SPECIFICATIONS ARE THE PROPERTY OF CIRCUIT ASSEMBLY SHEN ZHEN AND SHALL NOT BE REPRODUCED. COPIED OR USED IN ANY MANNER WITHOUT THE PRIOR WRITTEN CONSENT OF CIRCUIT ASSEMBLY SHEN ZHEN</small>				Q'TY	H629003		
				DR: Hifong 06/01/11'	<table border="1" style="display: inline-table; border-collapse: collapse;"> <tr> <td>SCALE</td> <td>SHEET</td> <td>REV.</td> </tr> <tr> <td>1/1</td> <td>3/4</td> <td>c</td> </tr> </table>	SCALE	SHEET
SCALE	SHEET	REV.					
1/1	3/4	c					

ITEM	CONNECTOR P/N:	BASE P/N:	CONTACT P/N:	WATER PROOF RING P/N:	RETENTION SUPPORT P/N:	COVER P/N:	RECOMMEND WIRE JACKET SIZE(OD)		
37	CA-01AESPL-711	AESP/B-1-1	AESP/T-1-T	AES/R006	AES/S	AES/C-2 ($\phi A=7.40$)	2.5mm ² &14AWG(OD: 6.5±0.20mm)		
38	CA-01AESPL-712		/						
39	CA-01AESPL-721	AESP/B-1-2	AESP/T-1-T						
40	CA-01AESPL-722		/						
41	CA-01AESPL-731	AESP/B-1-3	AESP/T-1-T						
42	CA-01AESPL-732		/						
43	CA-01AESPL-811	AESP/B-1-1	AESP/T-2-T	AES/R006		AES/S	AES/C-2 ($\phi A=7.40$)	4.0mm ² &12AWG(OD: 6.8±0.30mm)	
44	CA-01AESPL-812		/						
45	CA-01AESPL-821	AESP/B-1-2	AESP/T-2-T						
46	CA-01AESPL-822		/						
47	CA-01AESPL-831	AESP/B-1-3	AESP/T-2-T						
48	CA-01AESPL-832		/						
49	CA-01AESPL-911	AESP/B-2-1	AESP/T-2-T	AES/R005			AES/S	AES/C-1 ($\phi A=8.90$)	6.0mm ² &10AWG(OD: 7.6±0.30mm)
50	CA-01AESPL-912		/						
51	CA-01AESPL-921	AESP/B-2-2	AESP/T-2-T						
52	CA-01AESPL-922		/						
53	CA-01AESPL-931	AESP/B-2-3	AESP/T-2-T						
54	CA-01AESPL-932		/						

MILLIMETERS	INCH	UNITS	MM	NAME(INTENDED USE)	CIRCUIT ASSEMBLY SHENZHEN <small>CA INDUSTRIAL BUILDING, AOXING ROAD, AOBEI SECOND VILLAGE, HENGANG TOWN, SHENZHEN CITY, GUANGDONG, PROVINCE, CHINA.</small>						
X° ± 2'	X° ± 2'	MAT'L		PART NO.(INTENDED USE)							
.X ± 0.20	.X ± .008	SEE NOTES		CA-01AESPL-XXX							
.XX ± 0.15	.XX ± .006	FINISH		APPD: Ray 06/01/11'							
.XXX ± 0.10	.XXX ± 0.004	SEE NOTES		CHKD: John 06/01/11'	DWG NO.: H629003						
THESE DRAWINGS AND SPECIFICATIONS ARE THE PROPERTY OF CIRCUIT ASSEMBLY SHEN ZHEN AND SHALL NOT BE REPRODUCED. COPIED OR USED IN ANY MANNER WITHOUT THE PRIOR WRITTEN CONSENT OF CIRCUIT ASSEMBLY SHEN ZHEN				DR: Hifong 06/01/11'	<table border="1" style="display: inline-table; font-size: 8px;"> <tr> <td>SCALE</td> <td>SHEET</td> <td>REV.</td> </tr> <tr> <td>1/1</td> <td>4/4</td> <td>c</td> </tr> </table>	SCALE	SHEET	REV.	1/1	4/4	c
SCALE	SHEET	REV.									
1/1	4/4	c									