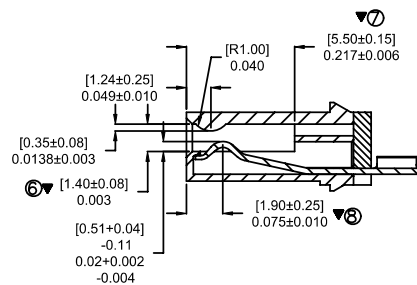
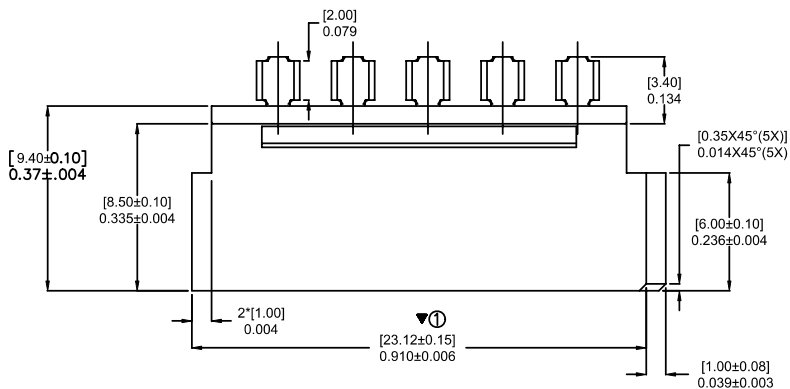
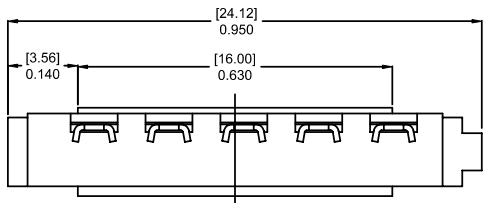
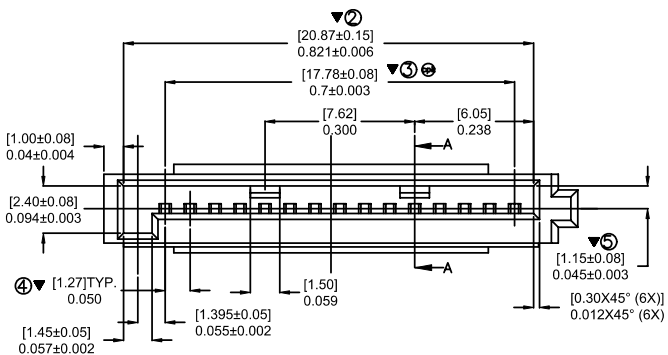
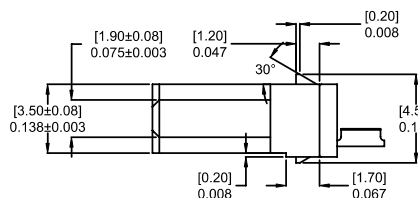


LTR	DESCRIPTION	DATE	APPROVED
A	INITIALRELEASE SEE DO H6409	03/30/15'	Ray



SECTION A-A



NOTE:UNLESS THERWISE SPECIFIED
ORDER INFORMATION

CA-15SATAS-X-SX

No. of Positions _____
Series Number _____
SERIAL ATA SOCKET
Plating _____
A=1u" gold contact
C=15u" gold contact
F=30u" gold contact
Profile _____
S=SOLDER
TYPE _____
BLANK=NO STUFF
1= WITH STUFF

NOTES :

- SPECIFICATION MATERIALS :
INSULATOR:LCP UL94V-0.BLACK
CONTACT:BRASS.
PLATING:GOLD FLASH PLATED ON CONTACT AREA OVER 50u" MIN .
TIN PLATED. NICKEL PLATED
- MARK ∇ DIMENSION MUST CONTROL,
MARK \odot IS DIM No.
MARK \oplus DIMENSION MUST CONTROL BY CPK.
- MEETS THE REQUIREMENTS OF DIRECTIVE 2011/65/EU OF THE EUROPEAN PARLIAMENT AND OF THE COUNCIL OF 03 JANUARY 2011 ON THE RESTRICTION OF THE USE OF CERTAIN HAZARDOUS SUBSTANCES IN ELECTRICAL AND ELECTRONIC EQUIPMENT. (ROHS 2.0)

DIMENSIONS ARE IN MILLIMETERS
TOLERANCES ARE:

DECIMALS ANGLES
X ± .13 ±3°
XX ± .05

DIMENSIONS IN BRACKETS [X.XX]
ARE IN INCHES TOLERANCES ARE:

DECIMALS ANGLES
XX ± .005 ±3°
XXX ± .002

DO NOT SCALE DRAWING

APPROVALS	DATE
DRAWN Venn	03/30/15
CHECKED James	03/30/15
APPROVED Ray	03/30/15

THE INFORMATION AND DESIGN DISCLOSED HEREIN WAS ORIGINATED BY AND IS THE PROPERTY OF CIRCUIT ASSEMBLY CORPORATION. CIRCUIT ASSEMBLY CORPORATION RESERVES ALL PATENT, PROPRIETARY, DESIGN, MANUFACTURING, REPRODUCTION, USE AND SALES RIGHTS THERETO, AND TO ANY ARTICLE DISCLOSED HEREIN EXCEPT TO THE EXTENT RIGHTS ARE EXPRESSLY GRANTED TO OTHERS. THE FOREGOING DOES NOT APPLY TO VENDOR PROPRIETARY RIGHTS.

CA	CIRCUIT ASSEMBLY SHENZHEN		
	TAO XING ROAD, AOBELI 2ND VILLAGE, HENGGANG TOWN		
CONN ASSY SOKET SOLDER 15PIN			
SATA SERIES			
SIZE	CODE IDENT NO.	DRAWING NO.	REV.
C	52072	H610675	A
SCALE: 1 : 1		SHEET 1 OF 1	