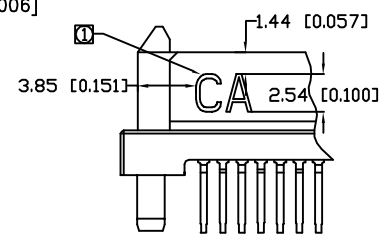
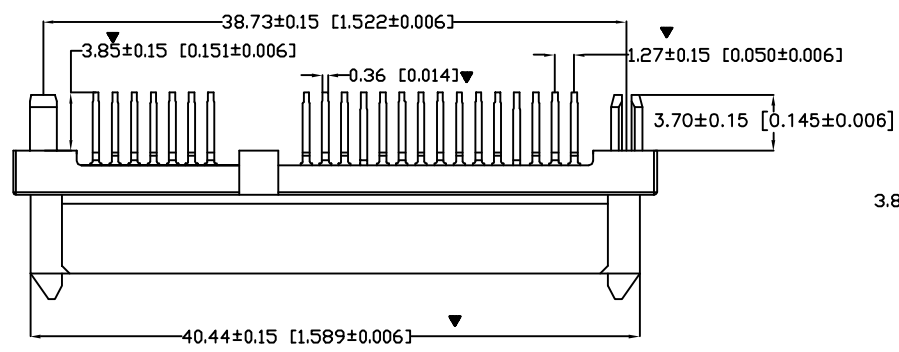


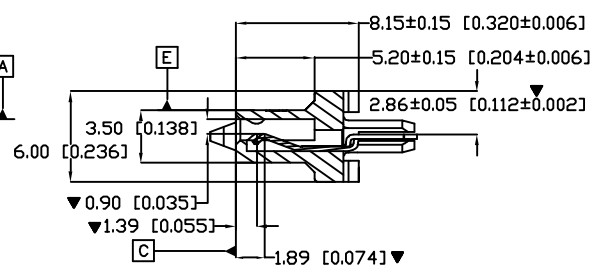
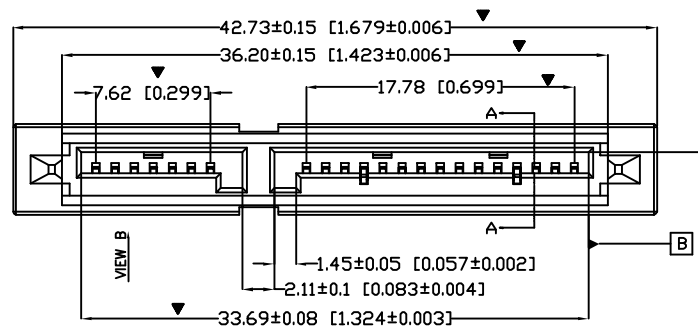
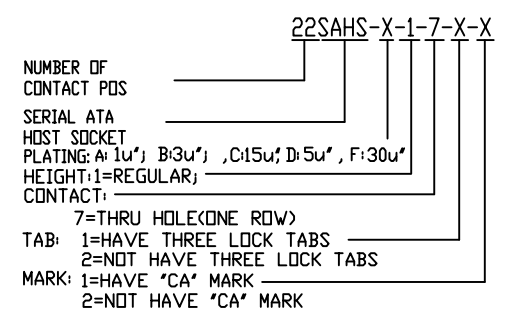
P/N 22SAHS-X-1-7-X-X

REV.	DESCRIPTION	DO.	APPD.
A	NEW	H0656	Robbie
B	ADD THE ROHS Lucy 06/11/09'	H3406	Ray



VIEW B

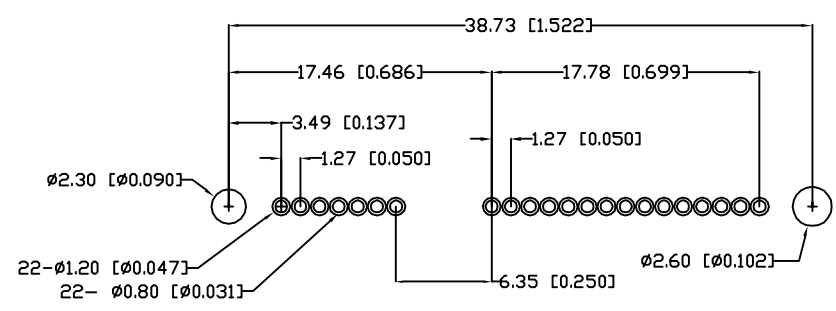
ORDERING NOMENCLATURE :



SECTION A-A

NOTES:

- MATERIAL :
HOUSING : HIGH TEMPERATURE THERMOPLASTIC (LCP) G.F.30%, UL94V-0, COLOR : BLACK
TERMINAL: PHOSPHOR BRONZE, C5210
THICKNESS = 0.30±0.01 mm
- TERMINAL PLATING :
CONTACT AREA : AU PLATED AT CONTACT AREA
PLATED ALL OVER : 50 u" MINIMUM
SOLDER TAIL: 150 u" PURE TIN
- PRODUCT SPECIFICATION REFER H100002
- PACKAGING REFER TO CAO-H030
- OTHER DIMENSION TOLERANCE IS 0.05mm
- MARK ▼ DIMENSION MUST CONTROL
- ALL DIMENSION MEASURE BY FAI
- ☐ THE MARK CAN OPTION
- MEETS THE REQUIREMENTS OF DIRECTIVE 2002/95/EC OF THE EUROPEAN PARLIAMENT AND OF THE COUNCIL OF 27 JANUARY 2003 ON THE RESTRICTION OF THE USE OF CERTAIN HAZARDOUS SUBSTANCES IN ELECTRICAL AND ELECTRONIC EQUIPMENT(ROHS)



RECOMMENDED P.C. BOARD LAYOUT
COMPONENT SIDE SHOWN(TOLERANCE±0.05mm)

MILLIMETERS	INCH	UNITS	MM	NAME(INTENDED USE)	CIRCUIT ASSEMBLY SHENZHEN CA INDUSTRIAL BUILDING, AOXING ROAD, AOSBI SECOND VILLAGE, HENGQIANG TOWN, SHENZHEN CITY, GUANGDONG PROVINCE, CHINA
X [*] ± 2 [*]	X [*] ± 2 [*]	MAT'L		PART NO.(INTENDED USE)	
.X ± 0.20	.X ± ---			22SAHS-X-1-7-X-X	SATA 22P SOCKET THROUGH HOLE(ONE ROW) ASSEMBLY
.XX ± 0.13	.XX ± .008	FINISH		APPD: Robbie lou11/27/04'	DWG NO.: H610309
.XXX ± ----	.XXX ± .005			CHKD: Robbie lou11/27/04'	
THESE DRAWINGS AND SPECIFICATIONS ARE THE PROPERTY OF CIRCUIT ASSEMBLY SHEN ZHEN AND SHALL NOT BE REPRODUCED, COPIED OR USED IN ANY MANNER WITHOUT THE PRIOR WRITTEN CONSENT OF CIRCUIT ASSEMBLY SHEN ZHEN				Q'TY	
				DR: RAY 11/26/04'	SCALE SHEET REV. 1/1 1/1 B