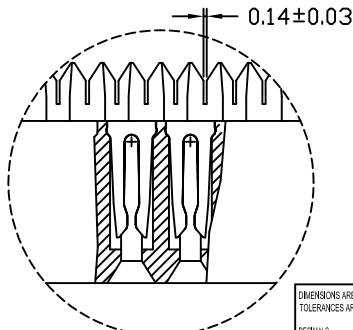
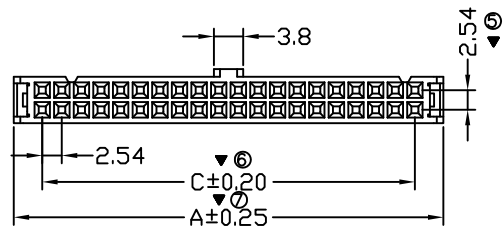
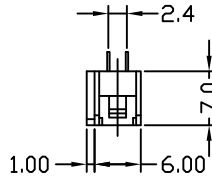
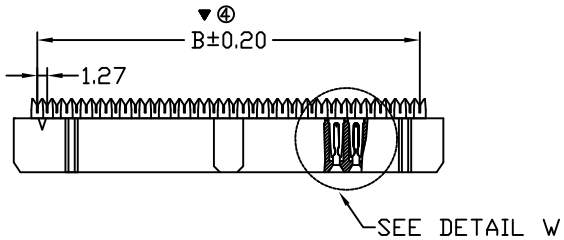
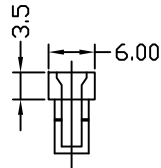
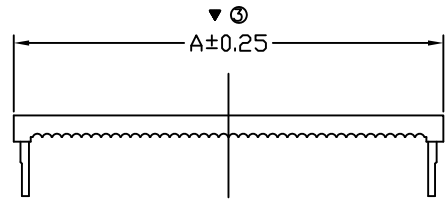
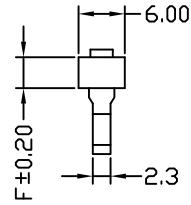
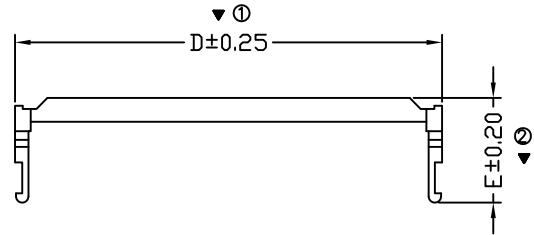


PART NO. XXFID4-X-XXX-SR

REVISIONS			
LTR	DESCRIPTION	DATE	APPROVED
A	NEW RELEASE		Ray
B	HAVE NO 24 PIN AND 60PIN	Colin 05/19/08	Ray
C	CHANGE THE NEW FRAME AND CRITICAL DIMENSION SEE DO H6115	Veron 09/05/14	Ray
D	CHANGE ROHS SEE DO H8218	ST.Y 07/12/19	Ray



POS.	DIM. A	DIM. B	DIM. C	DIM. D	DIM. E	DIM. F
8	14.86	8.89	7.62	14.66	13.55	5.00
10	17.40	11.43	10.16	17.20	13.55	5.00
12	19.94	13.97	12.70	19.74	13.55	5.00
14	22.48	16.51	15.24	22.28	13.55	5.00
16	25.02	19.05	17.78	24.82	13.55	5.00
18	27.56	21.59	20.32	27.36	13.55	5.00
20	30.10	24.13	22.86	29.90	13.55	5.00
26	37.72	31.75	30.48	37.52	13.55	5.00
30	42.80	36.83	35.56	42.80	13.45	4.85
34	47.88	41.91	40.64	47.68	13.55	5.00
36	50.42	44.45	43.18	50.22	13.55	5.00
40	55.50	49.53	48.26	55.30	13.55	5.00
44	60.58	54.61	53.34	60.38	13.55	5.00
50	68.20	62.23	60.96	68.40	13.45	4.85
64	85.98	80.01	78.74	85.78	13.55	5.00

NOTES :

- MATERIAL:**
INSULATOR:PBT+30% GLASS FIBER 15u'(UL 94).
CONTACT:COPPER ALLOY.GOLD OR TIN OVER NICKEL PLTAED.
- SPECIFICATION:**
CURRENT RATING : 1 AMP.
WITHSTAND VOLTAGE:AC 500V FOR 1 MINUTE.
INSULATION RESISTANCE:1000M MIN,AT DC 500V.
CONTACT RESISTANCE:15M? MAX.
OPERATING TEMPERATURE: -40°C ~ +105°C
- MARK"▽"DIMENSION MUST CONTROL,**
MARK"⊙"IS DIM NO.
- MEETS THE REQUIREMENTS OF THE EUROPEAN PARLIAMENT AND THE RESTRICTION OF THE USE OF CERTAIN HAZARDOUS SUBSTANCES IN ELECTRICAL AND ELECTRONIC EQUIPMENT. (RoHS)**

40 POS 2.54mm IDC CONNECTOR
SURFACE MOUNT SHOWN

DETAIL W 3:1

DIMENSIONS ARE IN MILLIMETERS
TOLERANCES ARE:
DECIMALS ANGLES
X ±.25 12°
XX ±.13
XXX ±—
DIMENSIONS IN BRACKETS (XXX)
ARE IN INCHES TOLERANCES ARE:
DECIMALS ANGLES
X ±.010 12°
XX ±.005
XXX ±—
DO NOT SCALE DRAWING

APPROVALS		DATE
DRAWN	COLIN	07/14/07
CHECKED	ERIC	07/14/07
APPROVED	Ray	07/14/07

THE INFORMATION AND DESIGN DISCLOSED HEREIN WAS ORIGINATED BY AND IS THE PROPERTY OF CIRCUIT ASSEMBLY CORPORATION. CIRCUIT ASSEMBLY CORPORATION RESERVES ALL PATENT, PROPRIETARY, DESIGN, MANUFACTURING, REPRODUCTION, USE AND SALES RIGHTS THERE TO, AND TO ANY ARTICLE DISCLOSED HEREIN EXCEPT TO THE EXTENT RIGHTS ARE EXPRESSLY GRANTED TO OTHERS. THE FOREGOING DOES NOT APPLY TO VENDOR PROPRIETARY RIGHTS.

CA	CIRCUIT ASSEMBLY SHENZHEN AO XING ROAD, AOBEI 2ND VILLAGE, HENGANG TOWN		
	2.54mm IDC SERIES CONNECTOR (ROHS)		
SIZE	CODE IDENT NO.	DRAWING NO.	REV.
C	52072	H511005	D
SCALE: 1:1		SHEET 1 OF 1	