

4

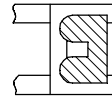
3

2

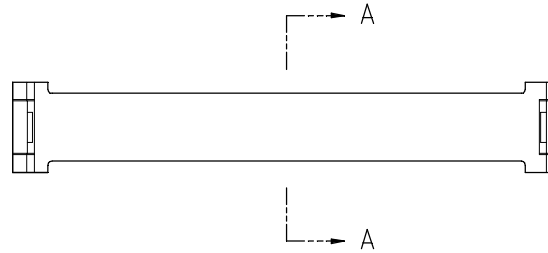
1

PART NO. CA-SRXXNFS

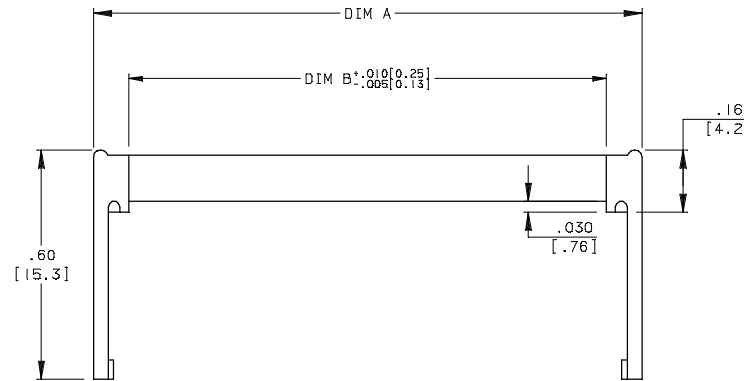
REVISIONS				
LTR	DESCRIPTION	DATE	APPROVED	
A	INITIAL RELEASE SEE DO 4231	C.P. 11-2-00	A. J.	
B	SEE DO 6890	C.P. 09-25-09	I. M.	
C	SEE DO 7023	C.P. 10-07-10	A. J.	



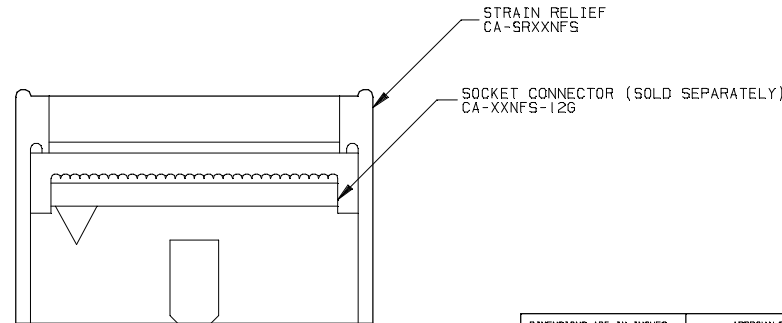
SECTION A-A



DASH NO.	TABULATION BLOCK			
	DIM A		DIM B	
	IN	MM	IN	MM
-10	.440	[11.18]	.258	[6.55]
-16	.590	[14.99]	.408	[10.36]
-20	.690	[17.53]	.508	[12.90]
-26	.840	[21.34]	.658	[16.71]
-34	1.040	[26.42]	.858	[21.79]
-40	1.190	[30.23]	1.008	[25.60]
-50	1.440	[36.58]	1.258	[31.95]
-60	1.690	[42.93]	1.508	[38.30]
-64	1.790	[45.47]	1.608	[40.84]
-68	1.890	[48.00]	1.708	[43.38]
-80	2.190	[55.63]	2.008	[51.00]
-100	2.690	[68.33]	2.508	[63.70]



APPLICATION



3. MEETS THE REQUIREMENTS OF DIRECTIVE 2002/95/EC OF THE EUROPEAN PARLIAMENT AND OF THE COUNCIL OF 27 JANUARY 2003 ON THE RESTRICTION OF THE USE OF CERTAIN HAZARDOUS SUBSTANCES IN ELECTRICAL AND ELECTRONIC EQUIPMENT. (RoHS)

2. INTERPRET DIMENSIONS AND TOLERANCE PER ASME Y14.5M-1994

1. MATERIAL: POLYCARBONATE, CUSTOM COLOR BLUE

NOTES: UNLESS OTHERWISE SPECIFIED

DIMENSIONS ARE IN INCHES TOLERANCES ARE:		APPROVALS	DATE
DECIMALS	ANGLES	DRAWN	CUONG.P 11/1/00
.XX ± .010	± 3°	CHECKED	A. JOCHEN 11/2/00
.XXX ± .005		THE INFORMATION AND DESIGN DISCLOSED HEREIN WAS ORIGINATED BY AND IS THE PROPERTY OF CIRCUIT ASSEMBLY CORPORATION. CIRCUIT ASSEMBLY CORPORATION RESERVES ALL PATENT, PROPRIETARY, DESIGN, MANUFACTURING, REPRODUCTION, USE AND SALES RIGHTS THEREIN, AND TO ANY ARTICLES DISCLOSED HEREIN EXCEPT TO THE EXTENT RIGHTS ARE EXPRESSLY GRANTED TO OTHERS. THE FOREGOING DOES NOT APPLY TO VENDOR PROPRIETARY RIGHTS.	
DIMENSIONS IN BRACKETS [] ARE IN MILLIMETERS TOLERANCES ARE:		DO NOT SCALE DRAWING	
DECIMALS	ANGLES		
.X ± .25	± 3°		
.XX ± .13			

SIZE	CODE IDENT NO.	DRAWING NO.	REV.
C	52072	630005	C

CA CIRCUIT ASSEMBLY CORP.
18 THOMAS ST., IRVINE, CALIFORNIA 92618-2777

STRAIN RELIEF, NFS
NANOFLEX
"ROHS COMPLIANT"

SCALE: 4 : 1 SHEET 1 OF 1

4

3

2

1