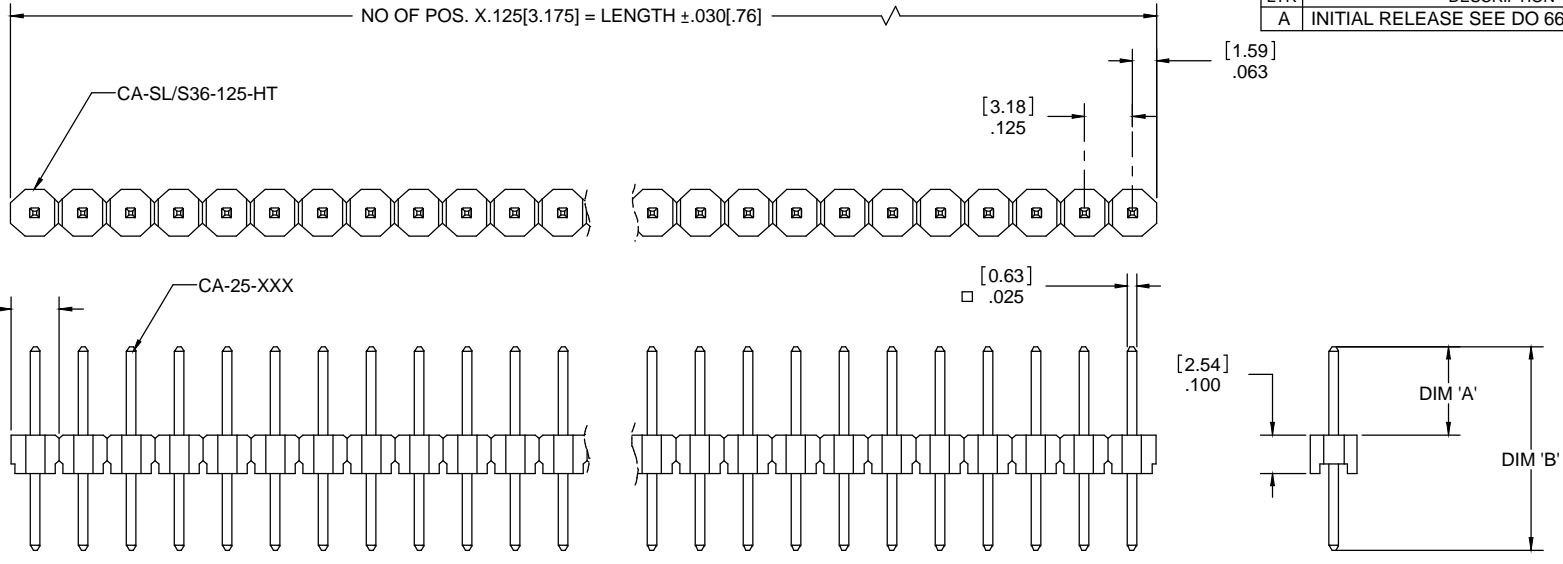


PART NO. CA-SXX-XXX-XX-125

REVISIONS			
LTR	DESCRIPTION	DATE	APPROVED
A	INITIAL RELEASE SEE DO 6669	CP 06-10-08	A.J.



ORDERING NOMENCLATURE :

CA-SXX-XXX-XX-125

SINGLE ROW _____

NO. OF POS. : _____
01 - 36

POST EXTENSION _____
DIM 'A'

PLATING : _____

B = .000010[.00025] GOLD
D = .000015[.00038] GOLD
E = .000030[.00076] GOLD
T = .000150 BRIGHT TIN
UNDERPLATE: .000075[.00190] NICKEL

PIN LENGTH _____
DIM 'B'

CENTERLINE : .125 _____

3. SPECIFICATIONS :
ENVIRONMENTAL :
 TEMPERATURE RANGE : -55°C TO 120°C
ELECTRICAL :
 CURRENT RATING : 1AMP
 DIELECTRIC WITHSTANDING VOLTAGE : 500 Vrms
 INSULATION RESISTANCE : >1000Megohms
MATERIAL :
 INSULATOR : 30% GLASS FILLED HIGH TEMPERATURE 6T NYLON, COLOR BLACK
 CONTACT : COPPER ALLOY

2. INTERPRET DIMENSIONS AND TOLERANCES PER ASME Y14.5M - 1994

1. MEETS THE REQUIREMENTS OF DIRECTIVE 2002/95/EC OF THE EUROPEAN PARLIAMENT AND OF THE COUNCIL OF 27 JANUARY 2003 ON THE RESTRICTION OF THE USE OF CERTAIN HAZARDOUS SUBSTANCES IN ELECTRICAL AND ELECTRONIC EQUIPMENT. (ROHS)

NOTES: UNLESS OTHERWISE SPECIFIED

DIMENSIONS ARE IN INCHES TOLERANCES ARE:		APPROVALS		DATE		CA CIRCUIT ASSEMBLY CORP.	
DECIMALS	ANGLES	DRAWN CUONG P.		6-10-08		18 THOMAS ST., IRVINE, CALIFORNIA 92618-2777	
.XX ±.010	±3°	CHECKED ART JOCHEN		6-10-08		CONNECTOR ASSEMBLY -SL SERIES	
.XXX ±.005		CA-SXX-XXX-XX-125, .125 ☐					
DIMENSIONS IN BRACKETS [X.XX] ARE IN MILLIMETERS TOLERANCES ARE:		THE INFORMATION AND DESIGN DISCLOSED HEREIN WAS ORIGINATED BY AND IS THE PROPERTY OF CIRCUIT ASSEMBLY CORPORATION. CIRCUIT ASSEMBLY CORPORATION RESERVES ALL PATENT, PROPRIETARY, DESIGN, MANUFACTURING, REPRODUCTION, USE AND SALES RIGHTS THERE TO, AND TO ANY APPLICABLE DISCLOSED HEREIN EXCEPT TO THE EXTENT RIGHTS ARE EXPRESSLY GRANTED TO OTHERS. THE FOREGOING DOES NOT APPLY TO VENDOR PROPRIETARY RIGHTS.		SIZE		CODE IDENT NO.	
DECIMALS	ANGLES	C		52072		DRAWING NO.	
X ± .25	±3°	DO NOT SCALE DRAWING		SCALE: 4 : 1		REV. A	
XX ± .13						DRAWING NO. 620521	
						SHEET 1 OF 1	