

4

3

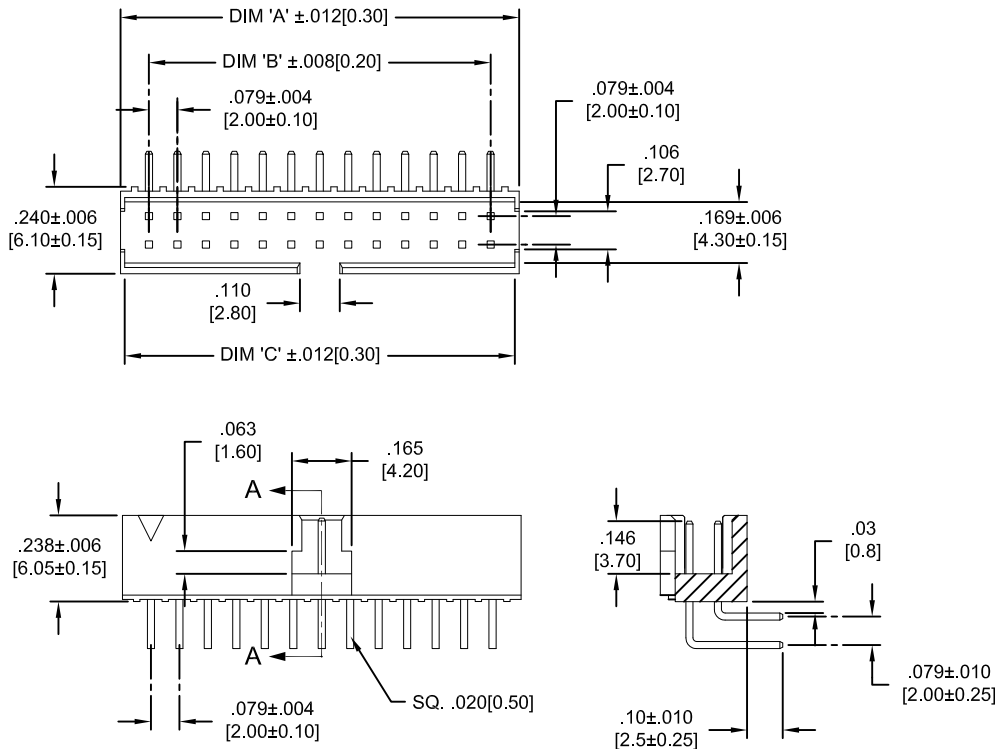
2

1

PART NO. CA-C73-MXXHLR-1A

REVISIONS

LTR	DESCRIPTION	DATE	APPROVED
A	INITIAL RELEASE SEE DO 6161	08-01-06	I.M.
B	SEE DO 7247	12-19-13	I.M.



ORDERING NOMENCLATURE :

CA - C73 - M XX HLR-1A

BOX HEADER, RIGHT ANGLE
W/POLARIZATION LATCHING

2MM

NO OF POS.

HEADER LOW PROFILE

COLOR BLACK, A TYPE

TABULATION :

NO. OF POSITION	DIM 'A'		DIM 'B'		DIM 'C'	
	IN	MM	IN	MM	IN	MM
10	0.48	12.1	0.31	8.0	0.45	11.4
14	0.63	16.1	0.47	12.0	0.61	15.4
16	0.71	18.1	0.55	14.0	0.69	17.4
20	0.87	22.1	0.71	18.0	0.84	21.4
24	1.03	26.1	0.87	22.0	1.00	25.4
26	1.11	28.1	0.94	24.0	1.08	27.4
30	1.26	32.1	1.10	28.0	1.24	31.4
34	1.42	36.1	1.26	32.0	1.39	35.4
40	1.66	42.1	1.50	38.0	1.63	41.4
44	1.81	46.1	1.65	42.0	1.79	45.4
50	2.05	52.1	1.89	48.0	2.02	51.4
60	2.44	62.1	2.28	58.0	2.42	61.4

RECOMMENDED P.C.B LAYOUT

2. SPECIFICATIONS :

MATERIAL :

INSULATOR : PA9T, GLASS FILLED, RATED UL94V-0
 CONTACT : BRASS
 CONTACT PLATING : Gold (Au) or Tin (Sn) over Nickel (Ni).

ELECTRICAL :

CURRENT RATING : 2.0 AMP
 CONTACT RESISTANCE : 20 milliohm MAX.
 INSULATION RESISTANCE : 1000 Megohm MIN.
 DIELECTRIC WITHSTANDING VOLTAGE : 500V AC FOR 1 MINUTE
 OPERATING TEMPERATURE : -40°C TO 105°C

1. MEETS THE REQUIREMENTS OF DIRECTIVE 2011/65/EU OF THE EUROPEAN PARLIAMENT AND OF THE COUNCIL OF 03 JANUARY 2011 ON THE RESTRICTION OF THE USE OF CERTAIN HAZARDOUS SUBSTANCES IN ELECTRICAL AND ELECTRONIC EQUIPMENT. (ROHS 2.0)

NOTES : UNLESS OTHERWISE SPECIFIED

DIMENSIONS ARE IN INCHES
TOLERANCES ARE :

DECIMALS .010
 XX ±.010
 ANGLES 25°
 XXX ±.010

DIMENSIONS IN BRACKETS [X.XX] ARE MILLIMETERS
 TOLERANCES ARE :

DECIMALS .010
 X ±.4
 ANGLES 43°
 XX ±.25

DO NOT SCALE DRAWING

APPROVALS

DRAWN CUONG P.

CHECKED IAN MORRELL

DATE 8-01-06

DATE

8-01-06

DATE

8-01-06

CA CIRCUIT ASSEMBLY CORP.
 18 THOMAS ST., IRVINE, CALIFORNIA 92618-2777

CONNECTOR ASSEMBLY - HLR SERIES
 HEADER LOW PROFILE, RIGHT ANGLE,
 WITH POLARIZATION LATCHING - "ROHS 2.0"

SIZE	CODE IDENT NO.	DRAWING NO.	REV.
C	52072	620506	B

SCALE: 2:1

SHEET 1 OF 1

4

3

2

1