

PART NO. CA-XXNFT2-X-XXXX

50NFT2 SHOWN

REVISIONS			
LTR	DESCRIPTION	DATE	APPROVED
A	INITIAL RELEASE SEE DD 5807	CP 6-22-05	L.F.
B	SEE DD 6555	CP 10-26-07	A.J.
C	SEE DD 7228	CP 04-22-13	I.M.
D	SEE DD 7250	CP 01-13-14	I.M.
E	SEE DD 7274	CP 07-01-14	I.M.
F	SEE DD 7315	CP 03-02-15	I.M.
G	SEE DD 7408	CP 06-07-17	I.M.
H	SEE DD 7490	CP 11-06-18	T.L.
J	SEE DD 7594	CP 01-22-21	T.L.

ORDERING NOMENCLATURE:  
 CA- [ ] NFT2- [ ] - [ ] - [ ]

NUMBER OF CONTACT POSITIONS  
 NANOFLEX  
 I.D. TRANSITION  
 PLUG WITH STANDOFFS

TAIL LENGTH  
 DIM 'C'  
 1 = .130 [3.30]  
 2 = .180 [4.57]  
 3 = .160 [4.06]

PLATING:  
 - T, 12G, E (STANDARD);  
 - T1, 12G1, E1 (CUSTOMER);

T, T1 = .000150 [0.00380] TIN  
 UNDERPLATE: .000100 [0.00250] NICKEL  
 12G, 12G1 = I.D.AREA : .000003 [0.000008] GOLD  
 TAIL AREA : .000012 [0.000030] GOLD MIN.  
 UNDERPLATE: .000100 [0.00250] NICKEL  
 E, E1 = I.D.AREA : .000003 [0.000008] GOLD  
 TAIL AREA : .000030 [0.00076] GOLD MIN.  
 UNDERPLATE: .000100 [0.00250] NICKEL

SPECIFICATIONS:

MECHANICAL:

CONTACT MATERIAL: PHOSPHOR BRONZE  
 INSULATOR MATERIAL: GLASS FILLED POLYESTER, UL94V-0,  
 COLOR: CUSTOM BLUE (298 C-299 C),  
 RECOMMENDED WIRE SIZE: 30 AND 32 AWG SOLID OR STRANDED

ELECTRICAL:

CURRENT RATING: 0.5 AMP DC  
 INSULATION RESISTANCE: > 1000 MEGOHMS  
 CONTACT RESISTANCE: 20 MILLIOHMS MAX. MEASURED THROUGH INSULATION  
 DISPLACEMENT PORTION OF NFT2 CONNECTOR.

DIELECTRIC WITHSTANDING VOLTAGE: 500 VAC FOR 1 MINUTE

ENVIRONMENTAL:

OPERATING TEMPERATURE: -40°C TO + 105°C

5 SEE PAGE 2 FOR PACKAGING INSTRUCTION.

- 4. MARK '▼' DIMENSION MUST BE CONTROLLED.
- MARK '⊗' IS DIMENSION No.
- MARK '⊕' MUST BE CONTROLLED BY CPK.

- 3. INTERPRET DIMENSIONS AND TOLERANCES PER ANSI Y14.5M-1982
- 2. FOR DETAIL SPECIFICATION SEE CAC DRAWING 100198
- 1. MEETS THE REQUIREMENTS OF THE EUROPEAN PARLIAMENT AND THE RESTRICTION OF THE USE OF CERTAIN HAZARDOUS SUBSTANCES IN ELECTRICAL AND ELECTRONIC EQUIPMENT. (RoHS)

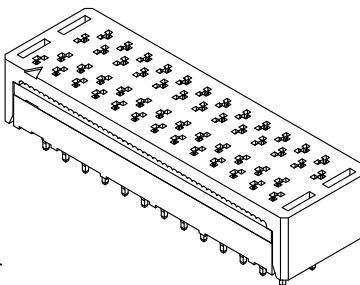
NOTES: UNLESS OTHERWISE SPECIFIED

DIMENSIONS ARE IN INCHES TOLERANCES ARE:		APPROVALS		DATE	CIRCUIT ASSEMBLY CORP. 6 AULRY, SUITE #150, IRVINE, CALIFORNIA 92618			
DECIMALS	ANGLES	DRAWN	CUDING P.	6-22-05				
.XX ± .010	± 3°	CHECKED	LERDY FONG	6-22-05	CONNECTOR ASSEMBLY -NFT2 SERIES			
.XXX ± .005		<small>THE INFORMATION AND DESIGN DISCLOSED HEREIN WAS ORIGINALLY DEVELOPED BY AND IS THE PROPERTY OF CIRCUIT ASSEMBLY CORPORATION. CIRCUIT ASSEMBLY CORPORATION RESERVES ALL PATENT, PROPRIETARY DESIGN, MANUFACTURING, REPRODUCTION, USE AND SALES RIGHTS THEREIN, AND TO ANY PATENT, PROPRIETARY DESIGN, MANUFACTURING, REPRODUCTION, USE AND SALES RIGHTS THEREIN. THESE RIGHTS ARE EXPRESSLY GRANTED TO OTHERS: THE FOREGOING DOES NOT APPLY TO VENDOR PROPRIETARY RIGHTS.</small>			SIZE C	CODE IDENT NO. 52072	DRAWING NO. 620486	REV. J
DO NOT SCALE DRAWING		SCALE: 4 : 1			SHEET 1 OF 2			

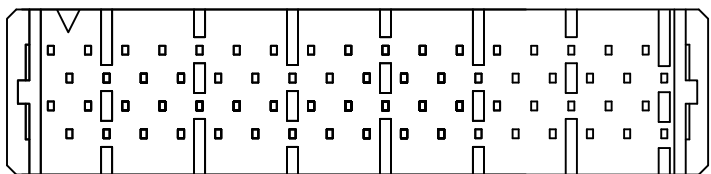
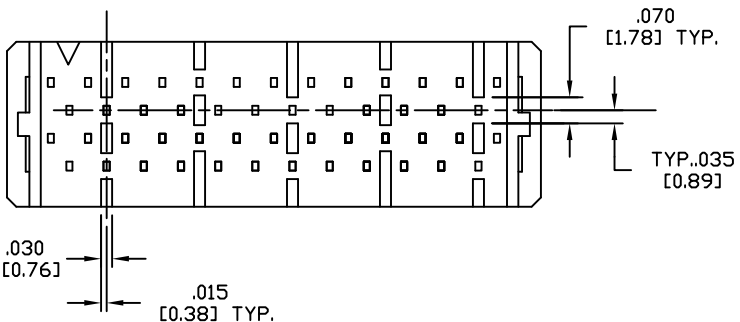
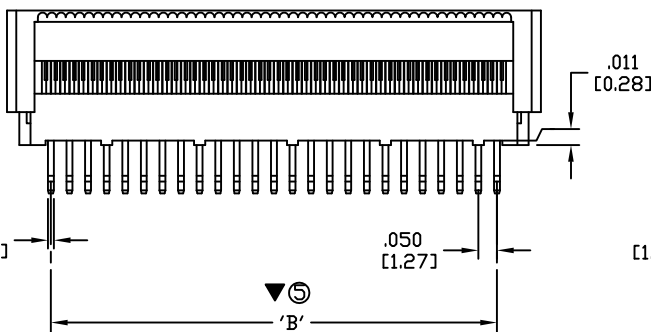
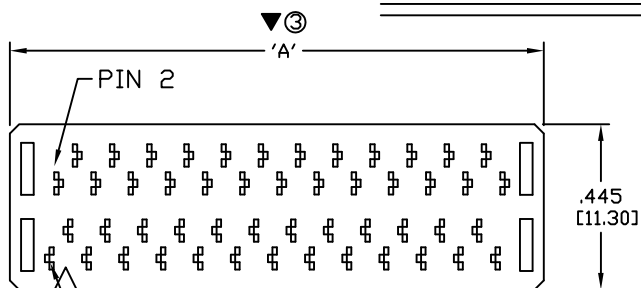
TABULATION:

NUMBER OF POSITIONS	A		B	
	IN	MM	IN	MM
50	1.436	36.48	1.200	30.48
68	1.886	47.90	1.650	41.91

STANDOFF PATTERN  
50 POSITION



STANDOFF PATTERN  
68 POSITION



4

3

2

1

4

3

2

1

4

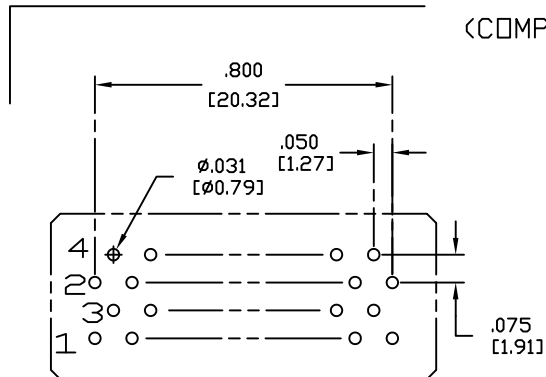
3

2

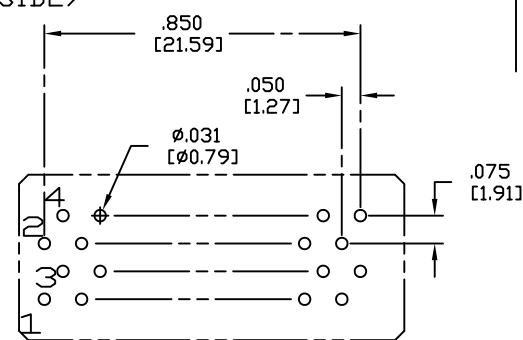
1

REVISIONS			
LTR	DESCRIPTION	DATE	APPROVED
	SEE SHEET 2 OF 2		

P.C.B. HOLE PATTERN  
(COMPONENT SIDE)



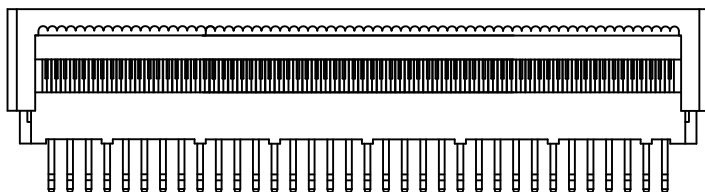
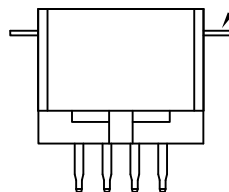
**FOR THE FOLLOWING SIZE: 50**



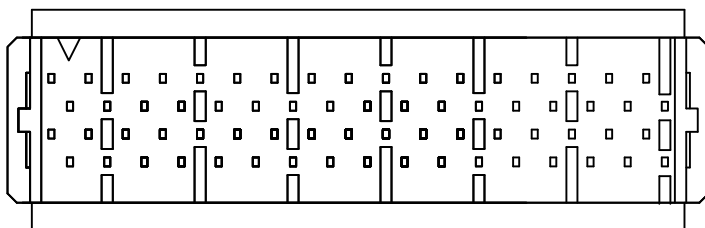
**FOR THE FOLLOWING SIZE: 68**

5

COVER PRESET WAFER INSTALLED BETWEEN COVER AND RETAINER  
12072-XX  
SEE TABULATION



DASH NO.	DIM A	WAFER PART NO.
-68	1.886	12072-68
-50	1.436	12072-50



DIMENSIONS ARE IN INCHES TOLERANCES ARE:		APPROVALS	DATE	<b>C</b> CIRCUIT ASSEMBLY CORP. 6 AUTRY, SUITE #150, IRVINE, CALIFORNIA 92618	
DECIMALS	ANGLES	DRAWN CUONG P.	6-22-05		
.XX ± .010	± 3°	CHECKED LEROY FONG	6-22-05	CONNECTOR ASSEMBLY -NFT2 SERIES CA-XXNFT2-XXX, NANOFLEX TRANSITION, PLUG, WITH STAND-OFF, "RoHS"	
.XXX ± .005		THE INFORMATION AND DESIGN DISCLOSED HEREIN WAS ORIGINATED BY AND IS THE PROPERTY OF CIRCUIT ASSEMBLY CORPORATION. CIRCUIT ASSEMBLY CORPORATION RESERVES ALL PATENT, PROPRIETARY DESIGN, MANUFACTURING, REPRODUCTION, USE AND SALES RIGHTS THEREIN, AND TO ANY PARTS THEREOF. RIGHTS ARE EXPRESSLY GRANTED TO OTHERS BY THE FOREGOING DOES NOT APPLY TO VENDOR PROPRIETARY RIGHTS.			
DIMENSIONS IN BRACKETS [XXX] ARE IN MILLIMETERS TOLERANCES ARE:		SIZE	CODE IDENT NO.	DRAWING NO.	REV.
DECIMALS	ANGLES	C	52072	620486	J
.X ± .25	± 3°	SCALE: 4 : 1		SHEET 2 OF 2	
.XX ± .13					

4

3

2

1