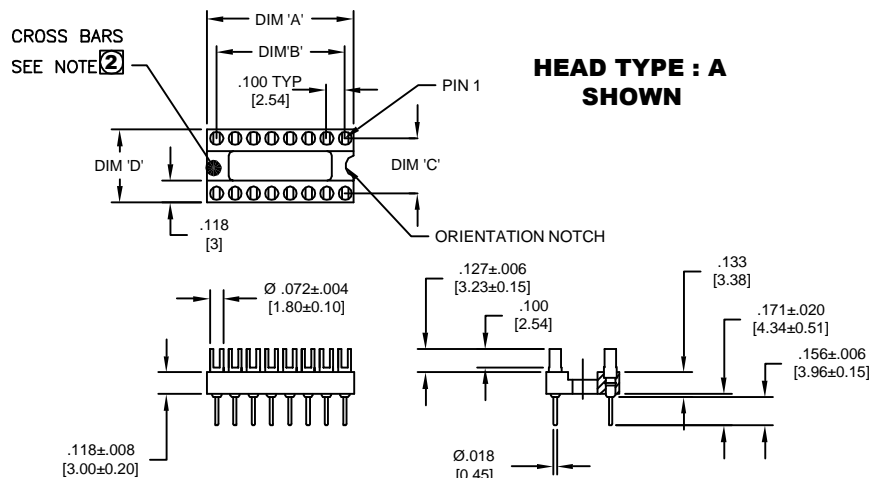


PART NO. CA-XXMP-X1B

REVISIONS				
LTR	DESCRIPTION	DATE	APPROVED	
A	INITIAL RELEASE SEE DO 4299	C.P. 01-08-01	A.J.	
B	SEE DO 6793	C.P. 12-29-08	I.M.	
C	SEE DO 7027	C.P. 10-15-10	A.J.	
D	SEE DO 7171	C.P. 01-12-12	I.M.	
E	SEE DO 7203	C.P. 08-16-12	I.M.	



CA - XX MP - X 1 B

NO. OF PIN POSITIONS

SCREW MACHINE CONTACT - PLUG, OPEN FRAME

PLUG HEAD TYPE

A = FORK
F = POST

TAIL TYPE

1 = SOLDER TAIL

PLATING

B = .000010 [0.00025] GOLD OVER
.000075 [0.00190] NICKEL

5. MEETS THE REQUIREMENTS OF DIRECTIVE 2002/95/EC OF THE EUROPEAN PARLIAMENT AND OF THE COUNCIL OF 27 JANUARY 2003 ON THE RESTRICTION OF THE USE OF CERTAIN HAZARDOUS SUBSTANCES IN ELECTRICAL AND ELECTRONIC EQUIPMENT. (ROHS)

4. SPECIFICATIONS :

ENVIRONMENTAL :

TEMPERATURE RANGE : -55°C TO +125°C

MECHANICAL :

INSULATOR MATERIAL : GLASS FILLED POLYESTER, BLACK, UL94V-0
CONTACT MATERIAL : BRASS

ELECTRICAL :

CURRENT RATING : 3 AMP
VOLTAGE RATING : 300 Vrms
DIELECTRIC WITHSTANDING VOLTAGE : 1000 Vrms
INSULATION RESISTANCE : >1000 Megohms
CONTACT RESISTANCE : 10 Milliomhs min.

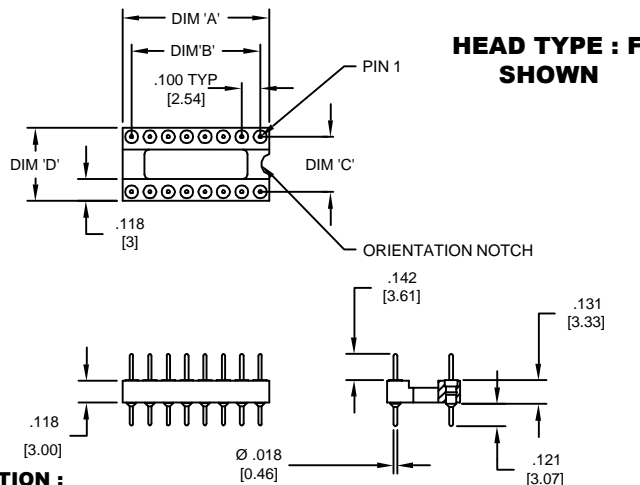
3. MATING CA PRODUCT :

MS

2 CA-06MP THRU CA-16MP HAVE 2 CROSS BARS
CA-18MP THRU CA-28MP HAVE 3 CROSS BARS
CA-32MP HAVE 3 CROSS BARS
CA-40MP HAVE 4 CROSS BARS

1. CONSULT FACTORY FOR ADDITIONAL PIN CONFIGURATIONS.

NOTES : UNLESS OTHERWISE SPECIFIED



TABULATION :

NO OF POSITION	DIM 'A' ± .008[0.20]		DIM 'B' ± .004[0.10]		DIM 'C' ± .004[0.10]		DIM 'D' ± .008[0.20]	
	IN	MM	IN	MM	IN	MM	IN	MM
06	.300	7.62	.200	5.08	.300	7.62	.400	10.16
08	.400	10.16	.300	7.62	.300	7.62	.400	10.16
14	.700	17.78	.600	15.24	.300	7.62	.400	10.16
16	.800	20.32	.700	17.78	.300	7.62	.400	10.16
18	.900	22.86	.800	20.32	.300	7.62	.400	10.16
20	1.000	25.4	.900	22.86	.300	7.62	.400	10.16
22	1.100	27.94	1.000	25.4	.400	10.16	.500	12.70
24-3*	1.200	30.48	1.100	27.94	.300	7.62	.400	10.16
24	1.200	30.48	1.100	27.94	.600	15.24	.700	17.78
28	1.400	35.56	1.300	33.02	.600	15.24	.700	17.78
32	1.600	40.64	1.500	38.10	.600	15.24	.700	17.78
40	2.000	50.8	1.900	48.26	.600	15.24	.700	17.78

*24 POSITION IS ALSO AVAILABLE WITH DIM 'C' : .300[7.62]
ADD -3 TO THE END OF PART NUMBER.

DIMENSIONS ARE IN INCHES TOLERANCES ARE:	APPROVALS DRAWN CUONG.P. CHECKED ART JOCHEN	DATE 01-02-01 01-02-01	CIRCUIT ASSEMBLY CORP. 18 THOMAS ST., IRVINE, CALIFORNIA 92618-2777 DIP PLUG OPEN FRAME CA-XXMP-X1B "ROHS COMPLIANT"
DECIMALS ANGLES XX ± .010 ± .3° XXX ± .005	THE INFORMATION AND DESIGN DISCLOSED HEREIN HAS ORIGINATED BY AND IS THE PROPERTY OF CIRCUIT ASSEMBLY CORPORATION. CIRCUIT ASSEMBLY CORPORATION RESERVES ALL PATENT, PROPRIETARY, DESIGN, MANUFACTURING, REPRODUCTION, USE AND SALES RIGHTS THEREOF, AND TO ANY ARTICLE DISCLOSED HEREIN EXCEPT TO THE EXTENT RIGHTS ARE EXPRESSLY GRANTED TO OTHERS. THE FOREGOING DOES NOT APPLY TO VENDOR PROPRIETARY RIGHTS.		
DIMENSIONS IN BRACKETS [XX] ARE IN MILLIMETERS TOLERANCES ARE:	DECIMALS ANGLES X ± .25 ± .3° XX ± .13	DO NOT SCALE DRAWING	SIZE C
	CODE IDENT NO. 52072	DRAWING NO. 620423	REV. E
	SCALE: 2:1	SHEET 1 OF 1	