

4 PART NO. CA-XXMP2-XX

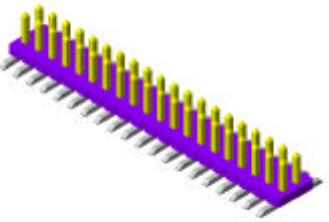
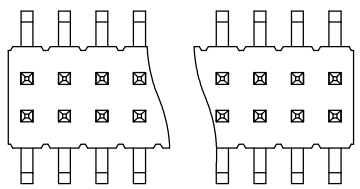
3

2

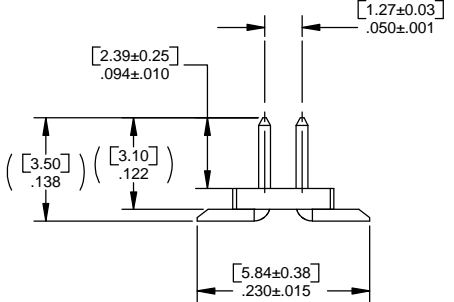
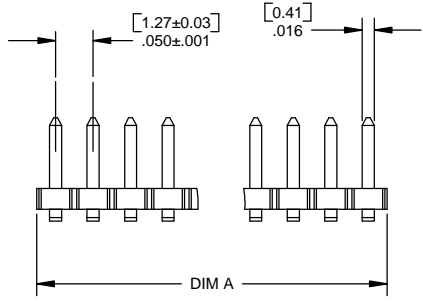
1 REVISIONS

LTR	DESCRIPTION	DATE	APPROVED
A	INITIAL RELEASE, SEE DO 4493	C.P. 5-23-01	L.F.
B	SEE DO 4778	C.P. 3-06-02	L.F.
C	SEE DO 4823	C.P. 4-25-02	L.F.

D



CA-40MP2-X0 SHOWN



ORDERING NOMENCLATURE

CA - XX MP2 - X X

NO. OF CONDUCTOR POS.

MP2 SERIES PLUG ASSEMBLY

LATCH  
0 NO LATCH  
1 WITH LATCH

CONTACT PLATING  
C .000015 IN GOLD  
B .000010 IN GOLD  
D .000005 IN GOLD  
A GOLD FLASH

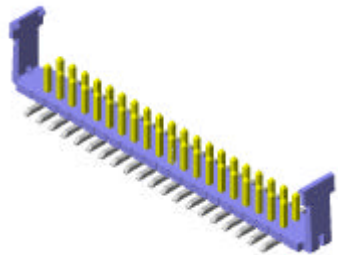
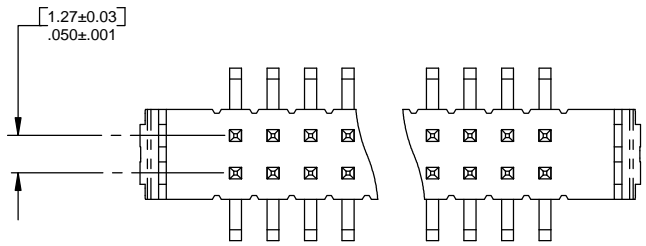
TAIL: .000150 IN 90/10 TIN/LEAD  
UNDERPLATE: .000075 IN NICKEL

TABULATION :

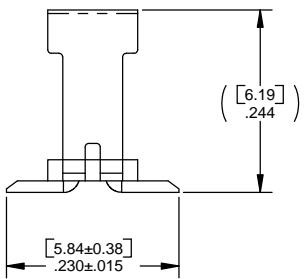
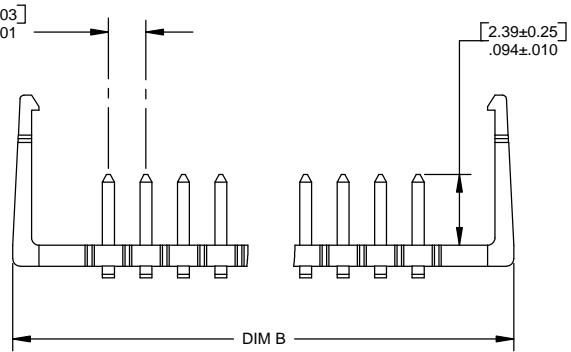
NO. OF CONTACT POS.	DIM 'A'	DIM 'B'
N	A=.025N IN	B=.025(N-2)+.255 IN
40	1.000 [25.40]	1.205 [30.61]
80	2.000 [50.80]	2.205 [56.01]

C

B



CA-40MP2-X1 SHOWN



3. PLATING

CONTACT AREA:  
C = .000015 IN GOLD  
B = .000010 IN GOLD  
D = .000005 IN GOLD  
A = GOLD FLASH

TAIL: .000150 IN 90/10 TIN/LEAD MIN  
UNDERPLATE: .000075 NICKEL

2. CONTACT MATERIAL: PHOSPHOR BRONZE

1. INSULATOR MATERIAL: GLASS FILLED NYLON, COLOR BLACK, UL94 V-0

NOTES: UNLESS OTHERWISE SPECIFIED

A

DIMENSIONS ARE IN INCHES TOLERANCES ARE: DECIMALS ANGLES XX ±.010 ±3° .XXX ±.005	APPROVALS DRAWN T. NGO CHECKED L. FONG	DATE 11-16-99 5-23-01	<b>CIRCUIT ASSEMBLY CORP.</b> 18 THOMAS ST., IRVINE, CALIFORNIA 92618-2777  <b>PLUG ASSEMBLY MP2 STRIPLINE</b>	SIZE C	CODE IDENT NO. 52072	DRAWING NO. 620420	REV. C
	DO NOT SCALE DRAWING						

4

3

2

1