

4

3

2

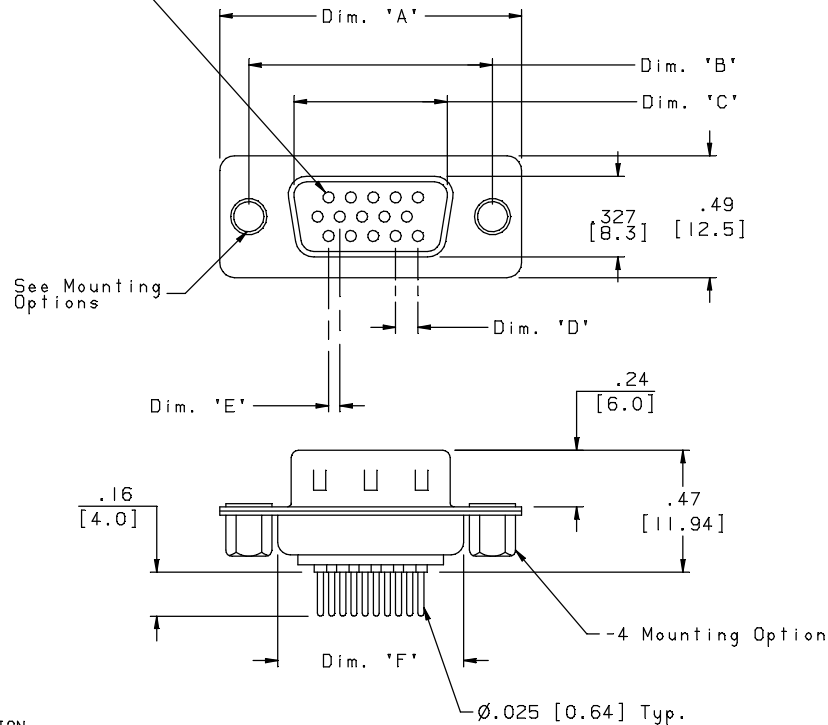
1

PART NO. CA-XXDHDP-X

REVISIONS

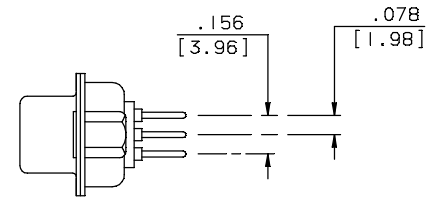
| LTR | DESCRIPTION | DATE | APPROVED |
|-----|-----------------------------|-------------|----------|
| A | INITIAL RELEASE SEE DO 3879 | JL 03-02-00 | A. J. |
| B | SEE DO 4010 | JL 05-12-00 | A. J. |

CONTACT 1



TABULATION:

| NO. OF POSITIONS | DIM. 'A' | DIM. 'B' | DIM. 'C' | DIM. 'D' | DIM. 'E' | DIM. 'F' |
|------------------|----------------|------------------|------------------|----------------|----------------|----------------|
| 15 | 1.21 [30.8] | .984 [25.00] | .666 [16.92] | .090 [2.29] | .045 [1.14] | .76 [19.2] |
| 26 | 1.54 [39.2] | 1.311 [33.30] | .994 [25.25] | .090 [2.29] | .045 [1.14] | 1.09 [27.7] |
| 44 | 2.09 [53.1] | 1.854 [47.10] | 1.534 [38.96] | .090 [2.29] | .045 [1.14] | 1.62 [41.1] |
| 62 | 2.73 [69.4] | 2.500 [63.50] | 2.182 [55.42] | .095 [2.41] | .047 [1.20] | 2.26 [57.3] |



CA-XXDHDP-X

NO. OF POSITIONS

HIGH DENSITY
D-SUBMINIATURE
PLUG

MOUNTING OPTIONS

BLANK = \varnothing .126 [3.2] THRU HOLE
4 = 4-40 THREADED INSERT

3. ADDITIONAL PLATING OPTIONS AVAILABLE
2. CONTACT PLATING: GOLD FLASH OVER NICKEL
1. MATERIAL:
INSULATOR: PLASTIC, UL94V-0, BLACK
CONTACT: COPPER ALLOY
SHELL: TIN PLATED STEEL

NOTES: UNLESS OTHERWISE SPECIFIED

| DIMENSIONS ARE IN INCHES TOLERANCES ARE: | | APPROVALS | | DATE | CA | CIRCUIT ASSEMBLY CORP. | | | | |
|--|---------------|----------------------|-------------|--------|---|--|--------------|----------------|-------------|------|
| DECIMALS | ANGLES | DRAWN | JUSTIN LANG | 3-2-00 | | 18 THOMAS ST., IRVINE, CALIFORNIA 92718-2703 | | | | |
| .XX \pm .10 | $\pm 3^\circ$ | CHECKED | A. JOCHEN | 3-2-00 | CONNECTOR ASSEMBLY CA-XXDHDP-X HIGH DENSITY D-SUB | | | | | |
| DIMENSIONS IN BRACKETS [X.XX] ARE IN MILLIMETERS TOLERANCES ARE: | | | | | THE INFORMATION AND DESIGN DISCLOSED HEREIN WAS ORIGINATED BY AND IS THE PROPERTY OF CIRCUIT ASSEMBLY CORPORATION. CIRCUIT ASSEMBLY CORPORATION RESERVES ALL PATENT, PROPRIETARY, DESIGN AND SALES RIGHTS THERE TO, AND TO ANY ARTICLE DISCLOSED HEREIN EXCEPT TO THE EXTENT RIGHTS ARE EXPRESSLY GRANTED TO OTHERS. THE FOREGOING DOES NOT APPLY TO VENDOR PROPRIETARY RIGHTS. | | SIZE | CODE IDENT NO. | DRAWING NO. | REV. |
| DECIMALS | ANGLES | DO NOT SCALE DRAWING | | | B | 52072 | 620401 | B | | |
| .XX \pm .25 | $\pm 3^\circ$ | | | | SCALE: 2 : 1 | | SHEET 1 OF 1 | | | |
| .XX \pm .13 | | | | | | | | | | |

4

3

2

1