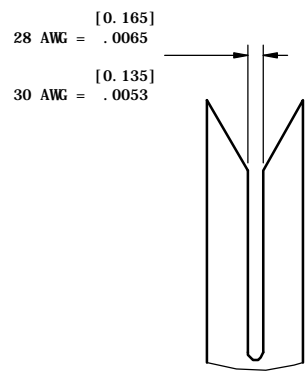
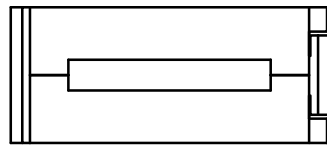


PART NO. XXRHDP-X-ID-XX

REVISIONS				
LTR	DESCRIPTION	DATE	APPROVED	
A	INITIAL RELEASE SEE DO 3562	DL 5-20-99	I. M	
B	SEE DO 3816	JL 12-22-99	A. J.	



INSULATION DISPLACEMENT PORTION OF CONTACTS



CA-XXRHDP-X-ID-XX

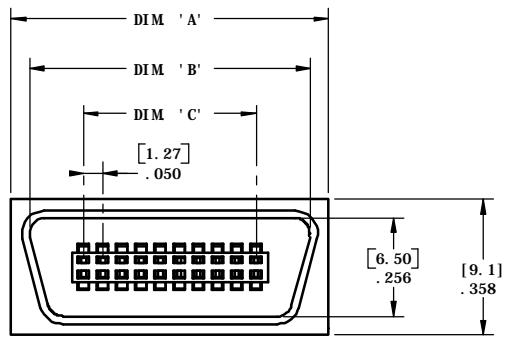
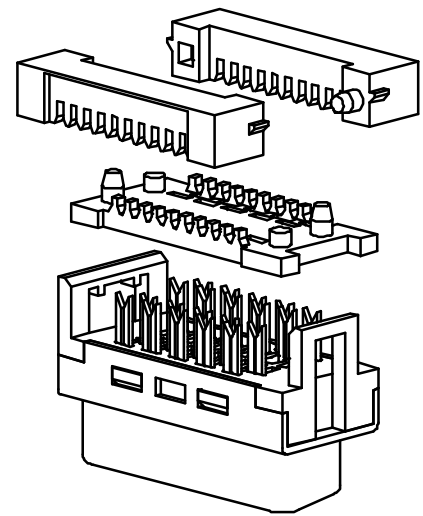
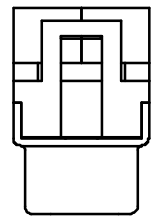
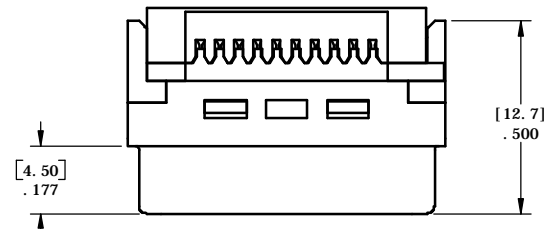
No. of Positions _____
SEE TABULATION

Ribbon Type _____
High Density _____
D-Shell Plug _____

Plating _____
B = .000010 [.00025] Selective Gold

Insulation Displacement _____

Wire Gauge (AWG) _____
28 = 28 GAUGE
30 = 30 GAUGE



- OPERATING TEMPERATURE RANGE:
-55° C TO +105° C
- ELECTRICAL SPECIFICATIONS:
CURRENT RATING - 1.0 AMP
DIELECTRIC WITHSTANDING VOLTAGE - AC 500 V r.m.s
INSULATION RESISTANCE - 500 MEGOHMS MINIMUM
CONTACT RESISTANCE - 35 MILLIOHMS MAXIMUM
RECOMMENDED WIRE GAUGE - 28 AWG OR 30 AWG
- MATERIALS:
INSULATOR - GLASS FILLED THERMOPLASTIC, BLACK, UL94V-0
CONTACT - COPPER ALLOY
SHELL - STEEL

NOTES: UNLESS OTHERWISE SPECIFIED

TABULATION:

NO OF POS.	DIMENSION		
	A	B	C
20	.827 [21.00]	.654 [16.60]	.450 [11.43]
26	.977 [24.81]	.804 [20.41]	.600 [15.24]
50	1.577 [40.05]	1.404 [35.66]	1.200 [30.48]
68	2.027 [51.48]	1.854 [47.09]	1.650 [41.91]

DIMENSIONS ARE IN INCHES TOLERANCES ARE: DECIMALS ANGLES .XX ±0.010 ±3° .XXX ±0.005	APPROVALS DRAWN: Derrick Lang CHECKED: Ian Morrell	DATE 5-20-99 5-20-99
DIMENSIONS IN BRACKETS [X.XX] ARE IN MILLIMETERS TOLERANCES ARE: DECIMALS ANGLES .X ±0.13 ±3° .XX ±0.05	THE INFORMATION AND DESIGN DISCLOSED HEREIN WAS ORIGINATED BY AND IS THE PROPERTY OF CIRCUIT ASSEMBLY CORPORATION. CIRCUIT ASSEMBLY CORPORATION RESERVES ALL PATENT, PROPRIETARY, DESIGN, MANUFACTURING, REPRODUCTION, USE AND SALES RIGHTS THERE TO, AND TO ANY ARTICLES DISCLOSED HEREIN EXCEPT TO THE EXTENT RIGHTS ARE EXPRESSLY GRANTED TO OTHERS. THE FOREGOING DOES NOT APPLY TO VENDOR PROPRIETARY RIGHTS.	SIZE C
DO NOT SCALE DRAWING	SCALE: 4:1	REV. B

CA **CIRCUIT ASSEMBLY CORP.**
18 THOMAS ST., IRVINE, CALIFORNIA 92618-2777

CONNECTOR ASSEMBLY RHPD SERIES

CODE IDENT NO. 52072	DRAWING NO. 620384	REV. B
-------------------------	------------------------------	------------------

SHEET 1 OF 1