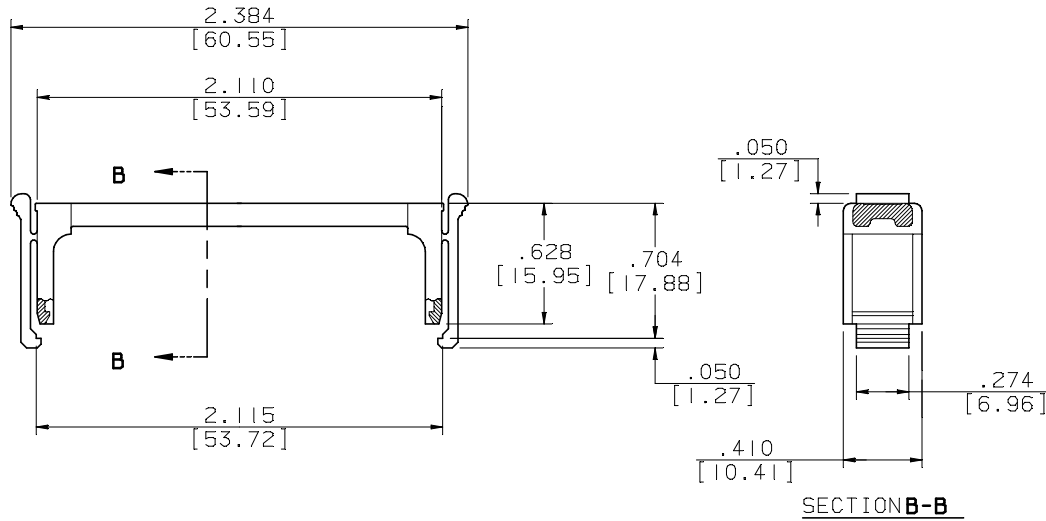


PART NO. CA-LSR68NFD

REVISIONS			
LTR	DESCRIPTION	DATE	APPROVED
A	INITIAL RELEASE SEE ECR 3428	10-5-95	A. J.
B	SEE ECO 2426	11-3-95	A. J.
C	SEE ECO 2429	PH 11-8-95	A. J.
D	SEE DO 4216	AJ 10-18-00	B.W.



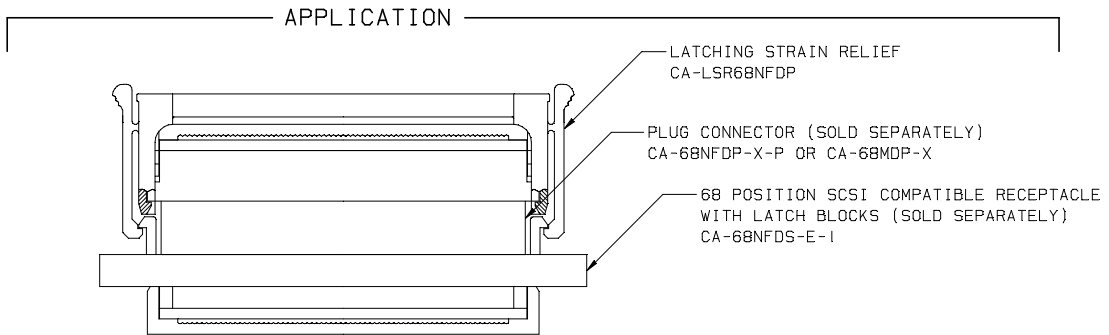
CA - LSR 68 NFD

LATCHING
STRAIN RELIEF

NUMBER OF
PIN POSITIONS

INSULATION DISPLACEMENT
D-TYPE PLUG

USED ON THE FOLLOWING CONNECTORS: CA-68NFD-X-P
CA-68MDP-X



2. SPECIFICATION:

ENVIRONMENTAL:
TEMPERATURE RANGE: -55° C TO +125° C

MECHANICAL:
INSULATOR MATERIAL: GLASS FILLED THERMOPLASTIC
COLOR BLACK, UL94V-0

1. INTERPRET DIMENSIONS AND TOLERANCES PER ASME Y14.5M-1994
NOTES: UNLESS OTHERWISE SPECIFIED

DIMENSIONS ARE IN INCHES TOLERANCES ARE:	APPROVALS	DATE	CIRCUIT ASSEMBLY CORP. 18 THOMAS ST., IRVINE, CALIFORNIA 92718-2703
DECIMALS .XX ± .XXX ± .010	DRAWN P. HAAR CHECKED A. JOCHEN	0/5/95 0/5/95	
DIMENSIONS IN BRACKETS [X.XX] ARE IN MILLIMETERS TOLERANCES ARE:	THE INFORMATION AND DESIGN DISCLOSED HEREIN WAS ORIGINATED BY AND IS THE PROPERTY OF CIRCUIT ASSEMBLY CORPORATION. CIRCUIT ASSEMBLY CORPORATION RESERVES ALL PATENT, PROPRIETARY, DESIGN, MANUFACTURING, REPRODUCTION, USE AND SALES RIGHTS THERETO, AND TO ANY ARTICLE DISCLOSED HEREIN EXCEPT TO THE EXTENT RIGHTS ARE EXPRESSLY GRANTED TO OTHERS, THE FOREGOING DOES NOT APPLY TO VENDOR PROPRIETARY RIGHTS.		LATCHING STRAIN RELIEF NFD AND MDP SERIES
DECIMALS .X ± .XX ± .25	DO NOT SCALE DRAWING	SIZE B	CODE IDENT NO. 52072
			DRAWING NO. 620357
			REV. D
		SCALE: 2:1	SHEET 1 OF 1