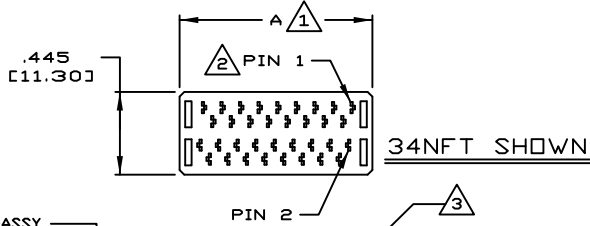


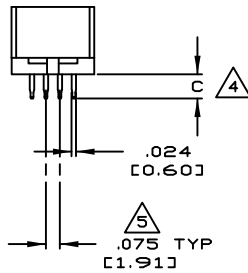
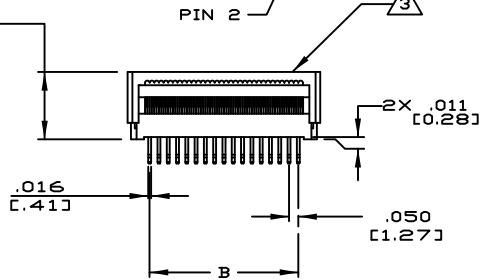
PART NO. CA-XXNFT-XX

LTR	DESCRIPTION	DATE	APPROVED
K	SEE DD 5530	CP 7-12-04	A.J.
L	SEE DD 5580	CP 8-26-04	A.J.
M	SEE DD 5933	CP 11-09-05	A.J.
N	SEE DD 7250	CP 01-14-14	I.M.
P	SEE DD 7522	CP 04-30-19	T.L.

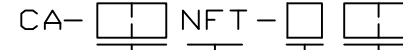
REVISIONS			
LTR	DESCRIPTION	DATE	APPROVED
A	INITIAL RELEASE SEE ECR 2521	7-20-93	A.J.
B	SEE ECD 2054	11-19-93	A.J.
C	SEE ECD 2153	5-2-94	A.J.
D	SEE ECD 2205	8-29-94	A.J.
E	SEE ECD 2287	2-6-95	A.J.
F	SEE ECD 2511	P.H. 3-20-96	A.J.
G	SEE ECD 2527	AJ 4-19-96	PCH
H	SEE ECD 2626	PH 12-12-96	JMCA
J	SEE DD 3877	CLW 2-15-00	A.J.



.360 SUB-ASSY [9.14]
.274 ASSEMBLED [6.95]



ORDERING NOMENCLATURE:



NUMBER OF CONTACT POSITIONS

NANOFLEX I.D. TRANSITION PLUG

TAIL LENGTH: DIM C

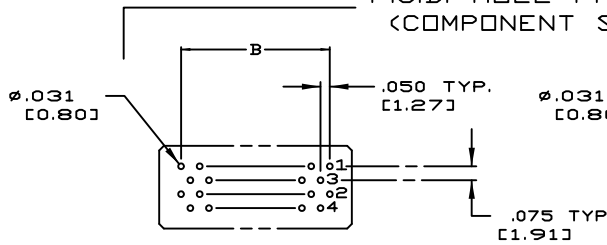
- 1 = .130 [3.30]
- 2 = .180 [4.57]
- 3 = .160 [4.06]

PLATING:

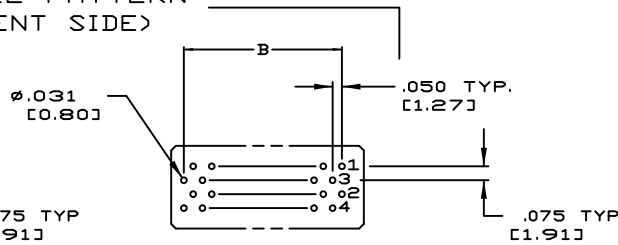
- T = .000150 [0.00380] TIN
- UNDERPLATE: .000100 [0.00250] NICKEL
- 12G = I.D.AREA : .000003 [0.000008] GOLD
- TAIL AREA : .000012 [0.00030] GOLD MIN.
- UNDERPLATE: .000100 [0.00250] NICKEL
- E = I.D.AREA : .000003 [0.000008] GOLD
- TAIL AREA : .000030 [0.00076] GOLD MIN.
- UNDERPLATE: .000100 [0.00250] NICKEL

MINIMUM PURCHASE 250,000 CONTACTS

P.C.B. HOLE PATTERN (COMPONENT SIDE)



FOR THE FOLLOWING SIZES: 10,26,34 AND 50



FOR THE FOLLOWING SIZES: 16,20,40,60,64,68,80 AND 100

5. SPECIFICATIONS:

MECHANICAL:

- CONTACT MATERIAL: PHOSPHOR BRONZE
- INSULATOR MATERIAL: GLASS FILLED POLYESTER, BLUE, UL94V-0
- RECOMMENDED WIRE SIZE: 30 AND 32 AWG SOLID OR STRANDED

ELECTRICAL:

- CURRENT RATING: 0.5 AMP DC
- INSULATION RESISTANCE: > 1000 MEGOHMS
- CONTACT RESISTANCE: 20 MILLIOHMS MAX. MEASURED THROUGH INSULATION
- DISPLACEMENT PORTION OF NFT CONNECTOR
- DIELECTRIC WITHSTANDING VOLTAGE: 500 VAC FOR 1 MINUTE

ENVIRONMENTAL:

- OPERATING TEMPERATURE: -40°C TO + 105°C

4. Δ DENOTES INSPECTION CRITERIA LINE ITEM NUMBER.

3. INTERPRET DIMENSIONS AND TOLERANCES PER ASME Y14.5M-1994

2. FOR DETAIL SPECIFICATION SEE CAC DRAWING 100198

1. MEETS THE REQUIREMENTS OF THE EUROPEAN PARLIAMENT AND THE RESTRICTION OF THE USE OF CERTAIN HAZARDOUS SUBSTANCES IN ELECTRICAL AND ELECTRONIC EQUIPMENT. (RoHS)

NOTES: UNLESS OTHERWISE SPECIFIED

TABULATION:

NUMBER OF POSITIONS	A		B	
	IN	MM	IN	MM
10	.436	11.08	.200	5.08
16	.586	14.89	.350	8.89
20	.686	17.43	.450	11.43
26	.836	21.24	.600	15.24
34	1.036	26.32	.800	20.32
40	1.186	30.13	.950	24.13
50	1.436	36.48	1.200	30.48
60	1.686	42.83	1.450	36.83
64	1.786	45.37	1.550	39.37
68	1.886	47.90	1.650	41.91
80	2.186	55.53	1.950	49.53
100	2.686	68.23	2.450	62.23

DIMENSIONS ARE IN INCHES TOLERANCES ARE:		APPROVALS		DATE	CIRCUIT ASSEMBLY CORP. 3A VANDERBILT, IRVINE, CALIFORNIA 92618-2030 CONNECTOR ASSEMBLY - NFT
DECIMALS	ANGLES	DRAWN R. PRICHETT		7/20/93	
.XX ± .010	± 3°	CHECKED A. JOCHEN		7/20/93	"RoHS" SIZE CODE IDENT NO. DRAWING NO. REV. C 52072 620346 P
.XXX ± .005		THE INFORMATION AND DESIGN DISCLOSED HEREIN WAS ORIGINATED BY AND IS THE PROPERTY OF CIRCUIT ASSEMBLY CORPORATION. CIRCUIT ASSEMBLY CORPORATION RESERVES ALL PAYMENT PROPRIETARY DESIGN, MANUFACTURING, REPRODUCTION, USE AND SALES RIGHTS THEREOF, AND TO ANY PATENT, TRADE SECRET, OR OTHER RIGHTS TO THE EXTENT SUCH RIGHTS ARE EXPRESSLY GRANTED TO OTHERS. THE FOREGOING DOES NOT APPLY TO VENDOR PROPRIETARY RIGHTS.			
DO NOT SCALE DRAWING		SCALE: 2:1		SHEET 1 OF 1	