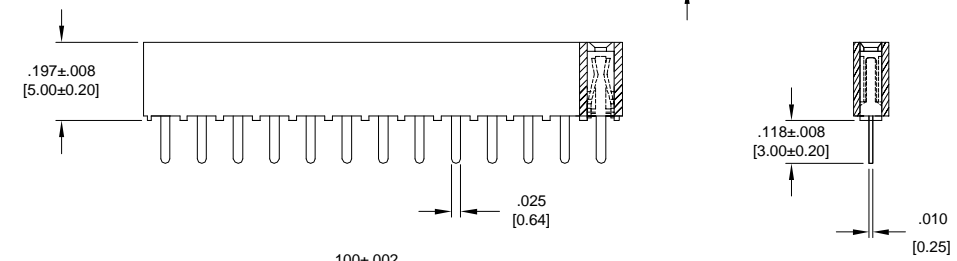
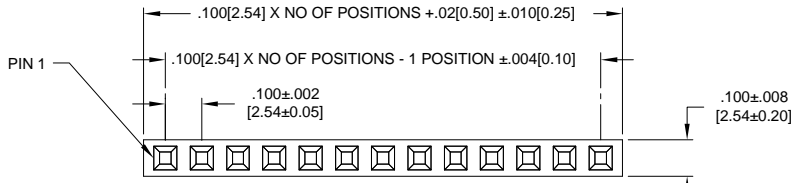


PART NO. CA-XXXVS3-XXA

SINGLE ROW

REVISIONS			
LTR	DESCRIPTION	DATE	APPROVED
A	INITIAL RELEASE SEE DO 6863	C.P. 06-16-09	A.J.

D



CA-XXXVS3-12 A

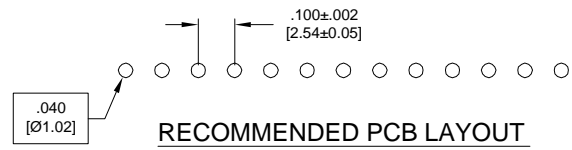
NO. OF ROW
 S = SINGLE ROW
 D = DUAL ROW

 NO. OF POSITIONS
 01-40 POSITIONS
 02-80 POSITIONS

 TAIL LENGTH
 12 = .118 [3.0]

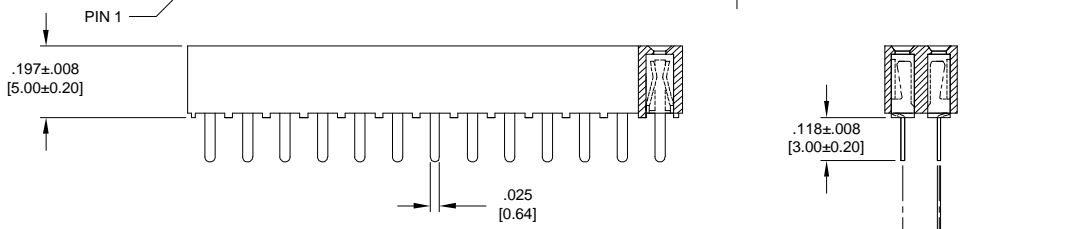
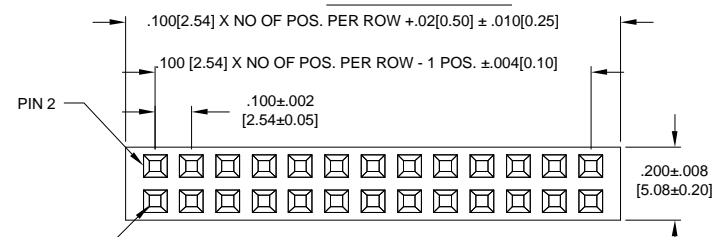
 PLATING
 A = GOLD FLASH OVER NICKEL

C



DUAL ROW

B



- RECOMMENDED MATING PIN SIZE .025[0.64] S.Q.
- SPECIFICATIONS :
 ENVIRONMENTAL :
 TEMPERATURE RANGE : -40°C TO +105°C

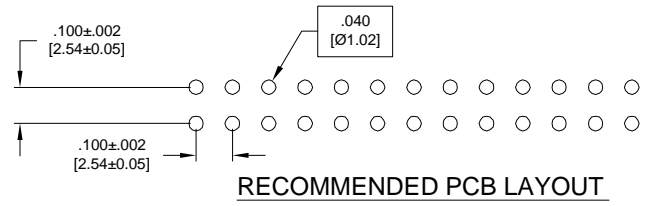
 MECHANICAL :
 INSULATOR MATERIAL : HGH TEMP. NYLON PA46, UL94V-0, COLOR: BLACK
 CONTACT MATERIAL : PHOSPHOR BRONZE

 ELECTRICAL :
 CURRENT RATING : 3 AMP
 INSULATION RESISTANCE : 1000 Megohms MIN.
 DIELECTRIC WITHSTANDING VOLTAGE : 600 V AC FOR 1 MINUTE

1. MEETS THE REQUIREMENTS OF DIRECTIVE 2002/95/EC OF THE EUROPEAN PARLIAMENT AND OF THE COUNCIL OF 27 JANUARY 2003 ON THE RESTRICTION OF THE USE OF CERTAIN HAZARDOUS SUBSTANCES IN ELECTRICAL AND ELECTRONIC EQUIPMENT. (ROHS)

NOTES : UNLESS OTHERWISE SPECIFIED

A



DIMENSIONS ARE IN INCHES		APPROVALS	DATE	CIRCUIT ASSEMBLY CORP. 18 THOMAS ST., IRVINE, CALIFORNIA 92618-2777
TOLERANCES ARE :		DRAWN	CUONG.P	
DECIMALS	ANGLES	CHECKED	ART JOCHEN	6-12-09
XX ±.010	α°	THE INFORMATION AND DESIGN DISCLOSED HEREIN WAS ORIGINATED BY AND IS THE PROPERTY OF CIRCUIT ASSEMBLY CORPORATION. CIRCUIT ASSEMBLY CORPORATION RESERVES ALL PATENT, PROPRIETARY, DESIGN, MANUFACTURING, REPRODUCTION, DUK AND SALES RIGHTS THEREIN, AND TO ANY ARTICLE DISCLOSED HEREIN EXCEPT TO THE EXTENT RIGHTS ARE EXPRESSLY GRANTED TO OTHERS. THE FOREGOING DOES NOT APPLY TO VENDOR, PROPRIETARY, RIGHTS.		
XXX ±.005		CONNECTOR ASSEMBLY - STRIP SOCKET CA-XXXVS3-12A, PROFILE : 5.0MM STRAIGHT "ROHS COMPLIANT"		
DIMENSIONS IN BRACKETS (X.XX) ARE IN MILLIMETERS		SIZE	CODE IDENT NO.	DRAWING NO.
TOLERANCES ARE :		C	52072	610359
DECIMALS	ANGLES	SCALE: 4 : 1		REV.
X ±.25	α°			A
XX ±.13		SHEET 1 OF 1		
DO NOT SCALE DRAWING				