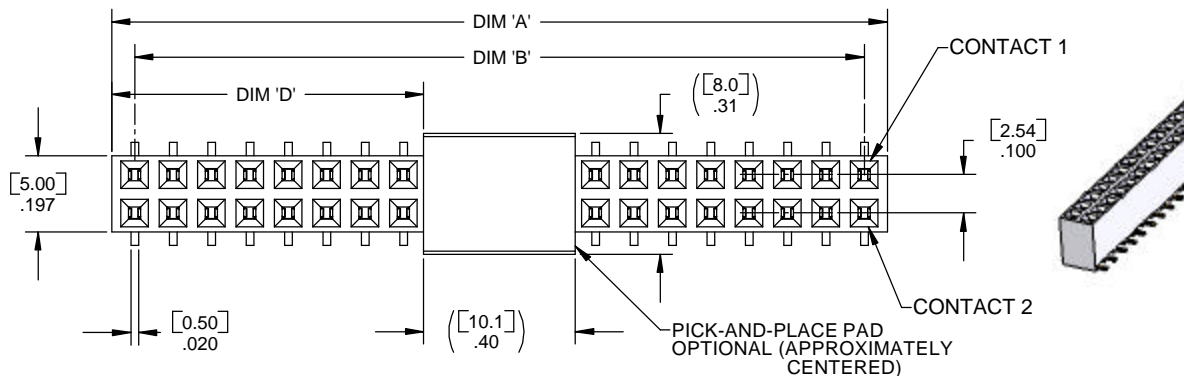


PART NO. CA-DXXVS2-XXX-X

REVISIONS			
LTR	DESCRIPTION	DATE	APPROVED
A	INITIAL RELEASE SEE DO 6335	C.P. 01-25-07	A.J.
B	SEE DO 6344	C.P. 02-05-07	I.M.



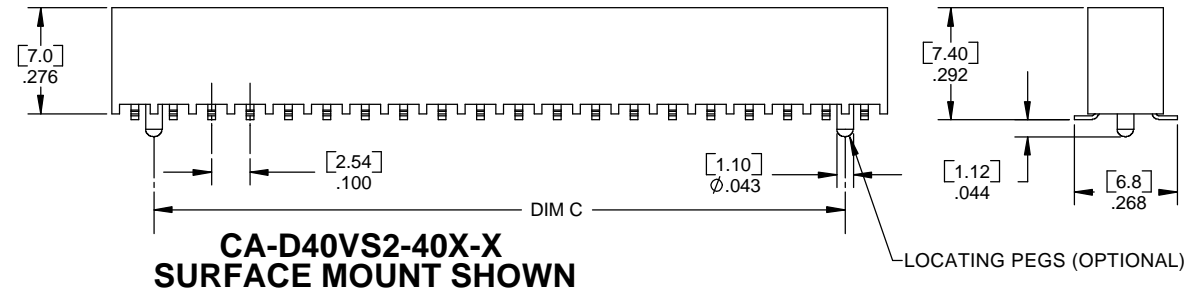
NUMBER OF ROWS _____
 D = DUAL ROW
 NUMBER OF CONTACT POS. _____
 SEE TABULATION FOR AVAILABLE SIZES.
 CONSULT FACTORY FOR SIZES NOT LISTED

VERTICAL STACKING _____
 SOCKET SERIES 2 _____

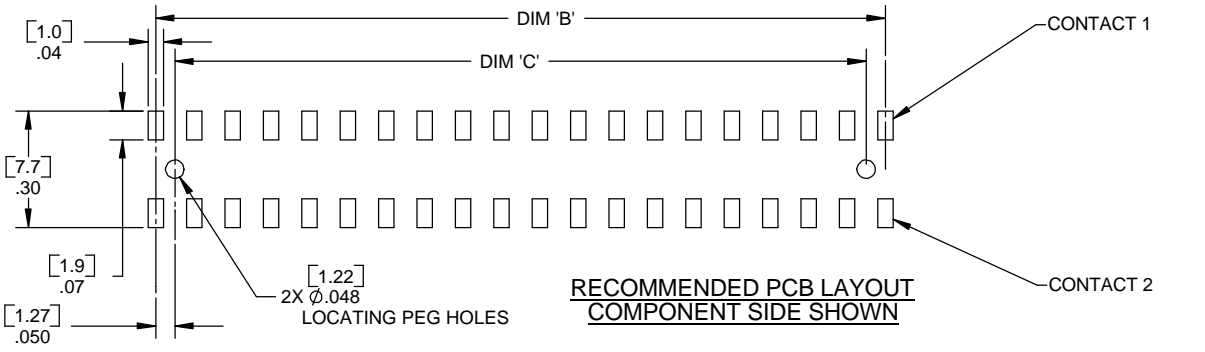
PROFILE & MOUNTING STYLE _____
 31 = 7mm INSULATOR HT, THROUGH HOLE, NO LOCATING PEGS
 40 = 7mm INSULATOR HT, SMT, WITH LOCATING PEGS

PLATING _____
 A = CONTACT AREA: GOLD FLASH (STANDARD)
 C = CONTACT AREA: .000015 [.00038] GOLD
 UNDERPLATE .000075 [.00191] NICKEL
 CONSULT FACTORY FOR ADDITIONAL PLATING OPTIONS

PACKAGING _____
 1 = TRAYS (STANDARD)
 2 = TRAYS WITH PICK-AND-PLACE PAD
 3 = TUBES WITH PICK-AND-PLACE PAD



CA-D40VS2-40X-X
SURFACE MOUNT SHOWN



RECOMMENDED PCB LAYOUT
COMPONENT SIDE SHOWN

2. SPECIFICATIONS :

MATERIAL :

INSULATOR MATERIAL: HIGH TEMPERATURE THERMOPLASTIC UL94 V-0

CONTACT MATERIAL: PHOSPHOR BRONZE

ELECTRICAL :

CURRENT RATING: 1 AMP

CONTACT RESISTANCE : 30 MILLIOHM MAX

INSULATOR RESISTANCE : 3000 MEGOHM MIN.

DIELECTRIC WITHSTANDING VOLTAGE : 500V AC FOR 1 MINUTE

OPERATING TEMPERATURE : -40° TO +105° C

1. MEETS THE REQUIREMENTS OF DIRECTIVE 2002/95/EC OF THE EUROPEAN PARLIAMENT AND OF THE COUNCIL OF 27 JANUARY 2003 ON THE RESTRICTION OF THE USE OF CERTAIN HAZARDOUS SUBSTANCES IN ELECTRICAL AND ELECTRONIC EQUIPMENT (RoHs)

NOTES : UNLESS OTHERWISE SPECIFIED

PART NO.	POS	A ±.006[0.15]		B ±.003[0.08]		C±.003[0.08]		D±.003[0.08]	
		in	mm	in	mm	in	mm	in	mm
D10VS2-XXX-X	10	0.520	13.21	0.400	10.16	0.300	7.62	0.010	0.25
D14VS2-XXX-X	14	0.720	18.29	0.600	15.24	0.500	12.70	0.110	2.79
D16VS2-XXX-X	16	0.820	20.83	0.700	17.78	0.600	15.24	0.210	5.33
D20VS2-XXX-X	20	1.020	25.91	0.900	22.86	0.800	20.32	0.310	7.87
D26VS2-XXX-X	26	1.320	33.53	1.200	30.48	1.100	27.94	0.410	10.41
D32VS2-XXX-X	32	1.620	41.15	1.500	38.10	1.400	35.56	0.610	15.49
D34VS2-XXX-X	34	1.720	43.69	1.600	40.64	1.500	38.10	0.610	15.49
D40VS2-XXX-X	40	2.020	51.31	1.900	48.26	1.800	45.72	0.810	20.57
D50VS2-XXX-X	50	2.520	64.01	2.400	60.96	2.300	58.42	1.010	25.65
D80VS2-XXX-X	80	4.020	102.11	3.900	99.06	3.800	96.52	1.810	45.97

DIMENSIONS ARE IN INCHES TOLERANCES ARE:		APPROVALS	DATE
DECIMALS	ANGLES	DRAWN CUONG P.	1-25-07
.XX ±.010	±3°	CHECKED A.JOCHEN	1-25-07
.XXX ±.005			
DIMENSIONS IN BRACKETS [X.XX] ARE IN MILLIMETERS TOLERANCES ARE:			
DECIMALS	ANGLES		
X ±.25	±3°		
.XX ±.13			
DO NOT SCALE DRAWING			

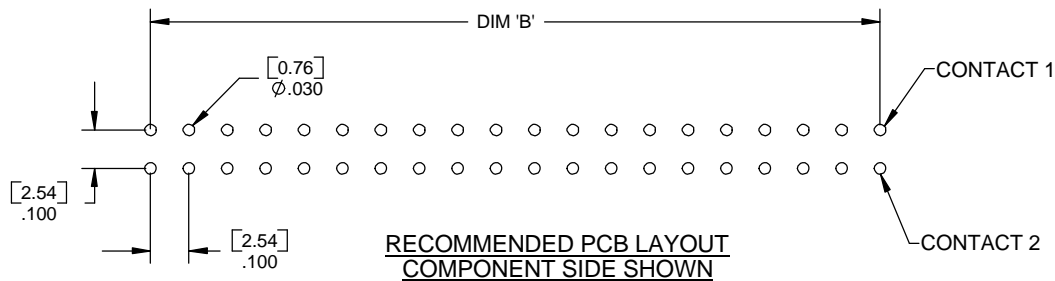
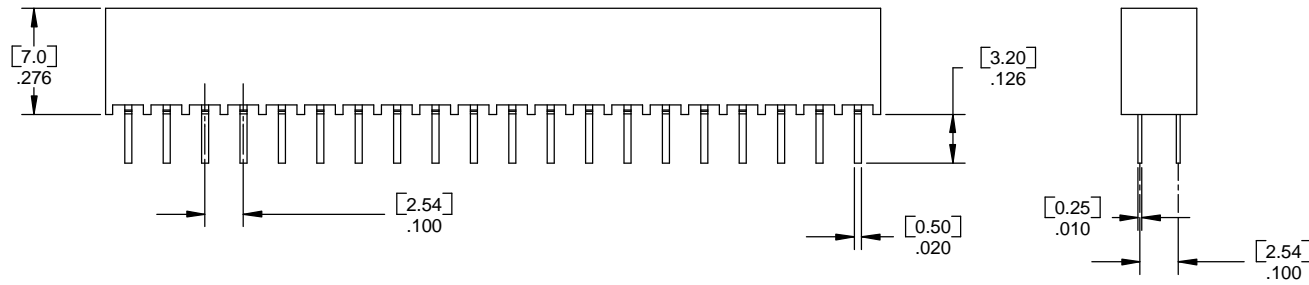
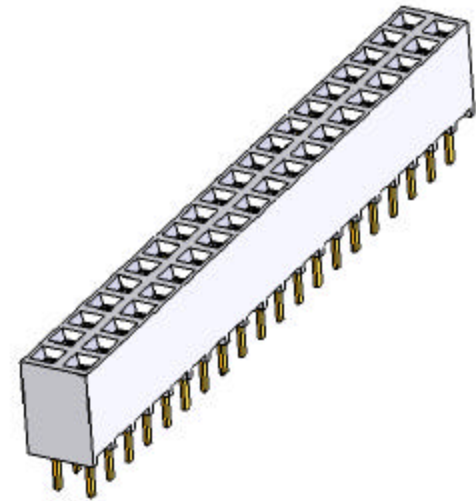
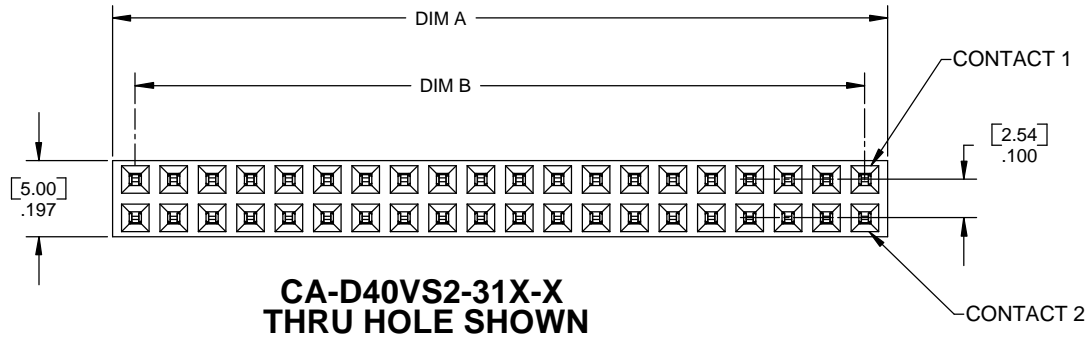
CIRCUIT ASSEMBLY CORP.
 18 THOMAS ST., IRVINE, CALIFORNIA 92618-2777

CONNECTOR ASSEMBLY- 7mm TALL
DXVS2 SERIES
ROHS COMPLIANT

SIZE	CODE IDENT NO.	DRAWING NO.	REV.
C	52072	610338	B

SCALE: 4:1 SHEET 1 OF 2

REVISIONS			
LTR	DESCRIPTION	DATE	APPROVED
	SEE SHEET 1 OF 2		



DIMENSIONS ARE IN INCHES
TOLERANCES ARE:
DECIMALS ANGLES
XX ±.010 ±3°
.XXX ±.005

DIMENSIONS IN BRACKETS
[X.XX] ARE IN MILLIMETERS
TOLERANCES ARE:
DECIMALS ANGLES
X ±.25 ±3°
XX ±.13

DO NOT SCALE DRAWING

APPROVALS	DATE
DRAWN CUONG P.	1-25-07
CHECKED A. JOCHEN	1-25-07

CIRCUIT ASSEMBLY CORP. 18 THOMAS ST., IRVINE, CALIFORNIA 92618-2777	CONNECTOR ASSEMBLY- 7mm TALL DXXVS2 SERIES ROHS COMPLIANT	
	SIZE C CODE IDENT NO. 52072	DRAWING NO. 610338
SCALE: 4:1	SHEET 2 OF 2	