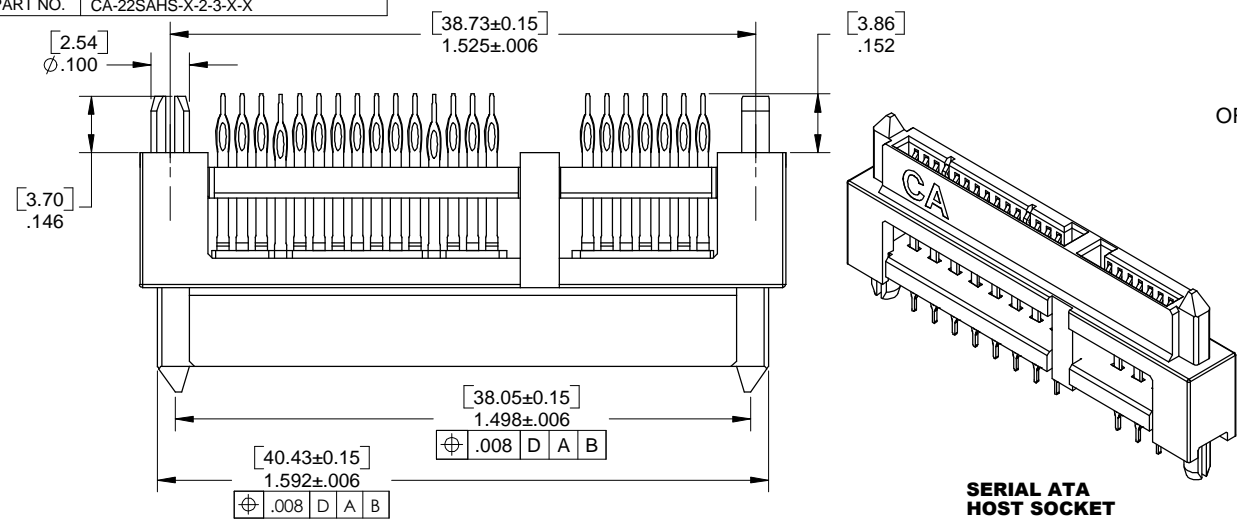


PART NO. CA-22SAHS-X-2-3-X-X

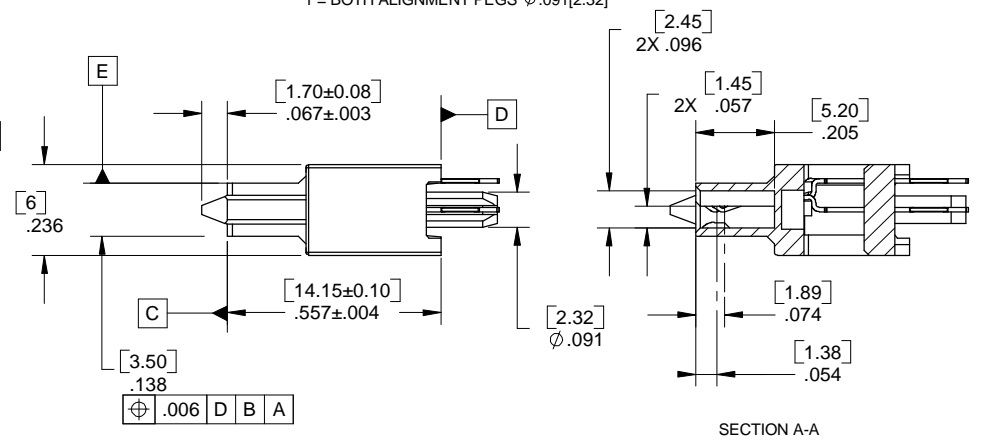
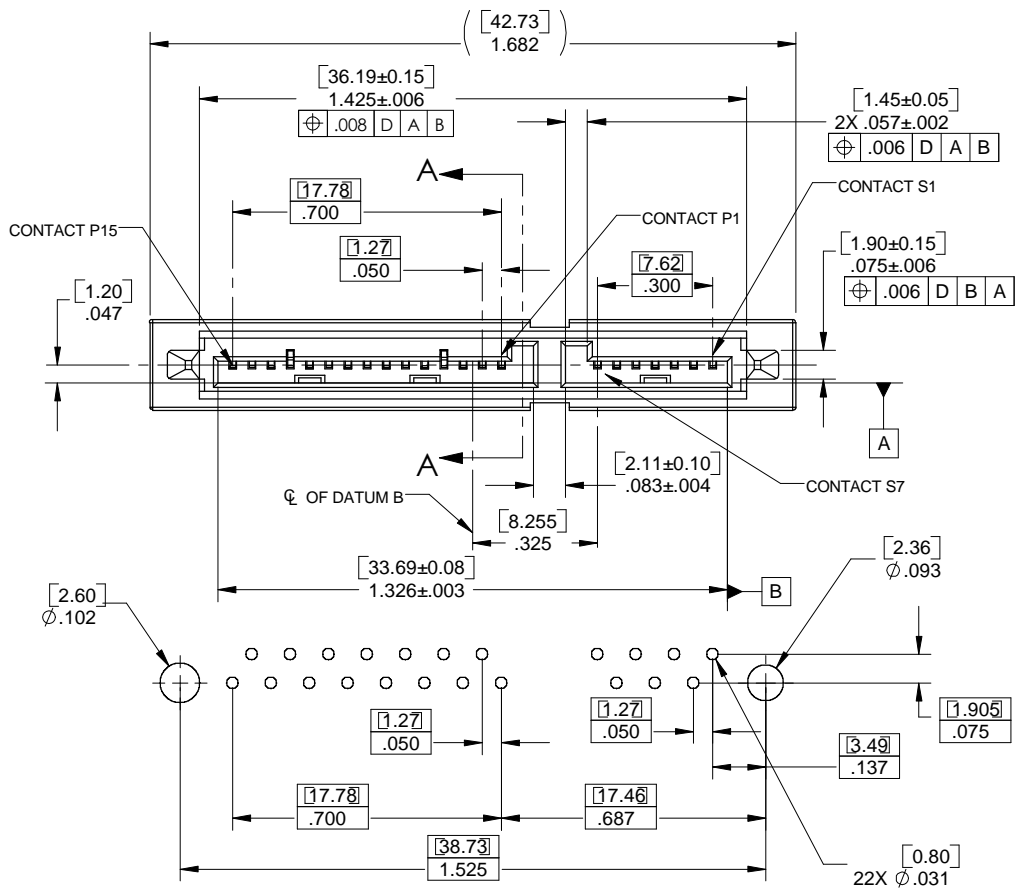
REVISIONS			
LTR	DESCRIPTION	DATE	APPROVED
A	INITIAL RELEASE SEE DO 5336	C.P. 11-19-03	A.J.



ORDERING NOMENCLATURE :

22SAHS-X-2-3-X-X

- NUMBER OF CONTACT POS** _____
- PLATING** _____
- A = CONTACT AREA : GOLD FLASH
 - C = CONTACT AREA : .00015 [.00038] GOLD
 - D = CONTACT AREA : .000005 [.00013] GOLD
 - F = CONTACT AREA : .000030 [.00076] GOLD
- ALL WITH :
 SOLDER TAIL AREA : .000100 [.00254] 90/10 TIN/LEAD ALLOY
 UNDERPLATE : .000050 [.00127] NICKEL MIN.
- HEIGHT** _____
- 2 = EXTENDED
- CONTACT STYLE** _____
- 3 = PRESS FIT
- CONFIGURATION** _____
- 1 = THREE LOCK TABS
 - 2 = NO LOCK TABS
- OPTION (IF REQUIRED)** _____
- 1 = BOTH ALIGNMENT PEGS ϕ .091[2.32]



MATERIALS
 HOUSING : HIGH TEMPERATURE THERMOPLASTIC UL 94V-0
 CONTACT : COPPER ALLOY

NOTES : UNLESS OTHERWISE SPECIFIED

DIMENSIONS ARE IN INCHES TOLERANCES ARE: DECIMALS ANGLES .XX ±.010 ±3° .XXX ±.005	APPROVALS	DATE
	DRAWN CUONG P.	11-17-03
DIMENSIONS IN BRACKETS [X.XX] ARE IN MILLIMETERS TOLERANCES ARE: DECIMALS ANGLES .X ±.25 ±3 .XX ±.13	CHECKED A.JOCHEN	11-17-03
	THE INFORMATION AND DESIGN DISCLOSED HEREIN WAS ORIGINATED BY AND IS THE PROPERTY OF CIRCUIT ASSEMBLY CORPORATION. CIRCUIT ASSEMBLY CORPORATION RESERVES ALL PATENT, PROPRIETARY, DESIGN, MANUFACTURING, REPRODUCTION, USE AND SALES RIGHTS THERE TO, AND TO ANY ARTICLE DISCLOSED HEREIN EXCEPT TO THE EXTENT RIGHTS ARE EXPRESSLY GRANTED TO OTHERS. THE FOREGOING DOES NOT APPLY TO VENDOR PROPRIETARY RIGHTS.	
DO NOT SCALE DRAWING	SCALE: 4 : 1	

CIRCUIT ASSEMBLY CORP. 18 THOMAS ST., IRVINE, CALIFORNIA 92618-2777			
CONNECTOR ASSEMBLY SAHS SERIES EXTENDED HEIGHT, PRESS FIT			
SIZE	CODE IDENT NO.	DRAWING NO.	REV.
C	52072	610306	A
SCALE: 4 : 1		SHEET 1 OF 1	