

PART NO. CA-07SATA-X-XX

REVISIONS			
LTR	DESCRIPTION	DATE	APPROVED
A	INITIAL RELEASE SEE DO 4831	C.P. 05-08-02	A.J.
B	SEE DO 4950	C.P. 08-21-02	A.J.
C	SEE DO 4954	C.P. 08-28-02	A.J.
D	SEE DO 5682	C.P. 01-17-05	A.J.

ORDERING NOMENCLATURE :

CA- 07 SATA - X - XX

NUMBER OF CONTACT POS

SERIAL ATA SOCKET

PLATING

A = CONTACT AREA : .000001 [.000003] Au
 D = CONTACT AREA : .000005 [.000013] Au
 C = CONTACT AREA : .000015 [.00038] Au
 F = CONTACT AREA : .000030 [.000076] Au

ALL WELD :
 SOLDER AREA : .000150 [.000380] TIN
 UNDERPLATE : .000075 [.000190] NICKEL

CONFIGURATION

R1 = RIGHT ANGLE, 30 AWG
 R2 = RIGHT ANGLE, 26 AWG

2. SPECIFICATIONS :

ENVIRONMENTAL :
 TEMPERATURE RANGE : -20 ° TO +85 °C
 MECHANICAL :
 INSULATOR MATERIAL : THERMOPLASTIC COMPOUNDS, UL94V-0
 CONTACT MATERIAL : COPPER ALLOY
 DURABILITY : 50 CYCLES
 ELECTRICAL :
 CURRENT RATING : 1 AMP
 INSULATION RESISTANCE : > 100 MEGOHMS
 CONTACT RESISTANCE : < 30 MILLIOHMS
 < 45 MILLIOHMS AFTER STRESS

1. INTERPRET DIMENSIONS AND TOLERANCES ASME Y14.5M-1994

NOTE: UNLESS OTHERWISE SPECIFIED

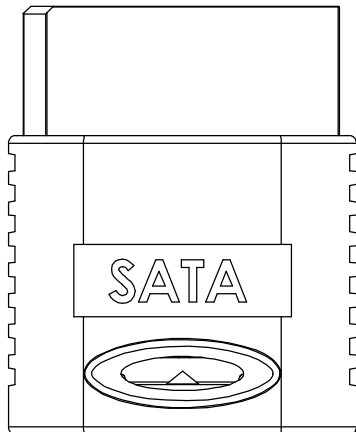
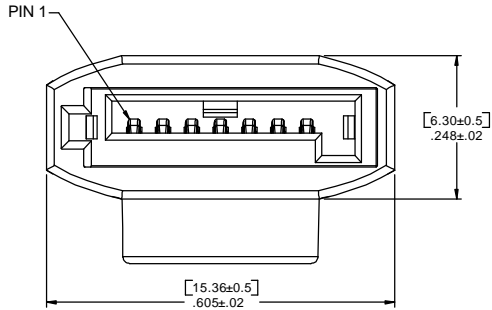
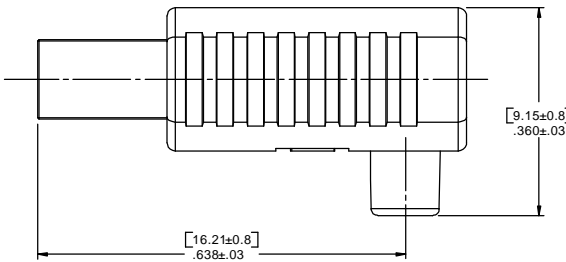
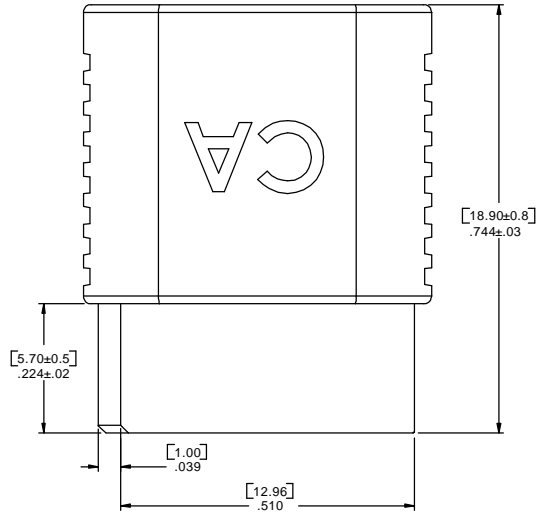
DIMENSIONS ARE XINCHES TOLERANCES ARE:		APPROVALS	DATE
DECIMALS	ANGLES	DRAWN	CUONG P.
.XX ±.010	±3°	CHECKED	ART JOCHEN
.XXX ±.005			5-02-02
DIMENSIONS IN BRACKETS [X.XX] ARE IN MILLIMETERS TOLERANCES ARE:		THE INFORMATION AND DESIGN DISCLOSED HEREIN WAS ORIGINATED BY AND IS THE PROPERTY OF CIRCUIT ASSEMBLY CORPORATION. CIRCUIT ASSEMBLY CORPORATION RESERVES ALL PATENT, PROPRIETARY, DESIGN, MANUFACTURING, REPRODUCTION, USE AND SALES RIGHTS HERETO, AND TO ANY ARTICLE DISCLOSED HEREIN EXCEPT TO THE EXTENT RIGHTS ARE EXPRESSLY GRANTED TO OTHERS. THE FOREGOING DOES NOT APPLY TO VENDOR PROPRIETARY RIGHTS.	
DECIMALS	ANGLES	SIZE	CODE IDENT NO.
.X ±.25	±3°	C	52072
.XX ±.13		DRAWING NO.	REV.
DO NOT SCALE DRAWING		610289	D
		SCALE: 6:1	SHEET 1 OF 1

CA CIRCUIT ASSEMBLY CORP.
 18 THOMAS ST., IRVINE, CALIFORNIA 92618-2777

CONNECTOR ASSEMBLY SATA SERIES

SIZE: C CODE IDENT NO.: 52072 DRAWING NO.: 610289 REV.: D

SCALE: 6:1 SHEET 1 OF 1



PIN	DEFINITION	NOTE
1	GND	FIRST MATE
2	A+	DIFFERENTIAL SIGNAL
3	A-	PAIR A FROM PHY
4	GND	FIRST MATE
5	B-	DIFFERENTIAL SIGNAL
6	B+	PAIR B FROM PHY
7	GND	FIRST MATE

ITEM	QTY	DESCRIPTION	DWG NO.	PART NO.
3	1	BOOT	10744	SATA/BT07RA-X
2	1	TOP COVER	12136	SATA/C07STR-X
1	1	BASE SUB-ASSY	12138	SATA/BA07-X
		CA-07SATA-X-XX		