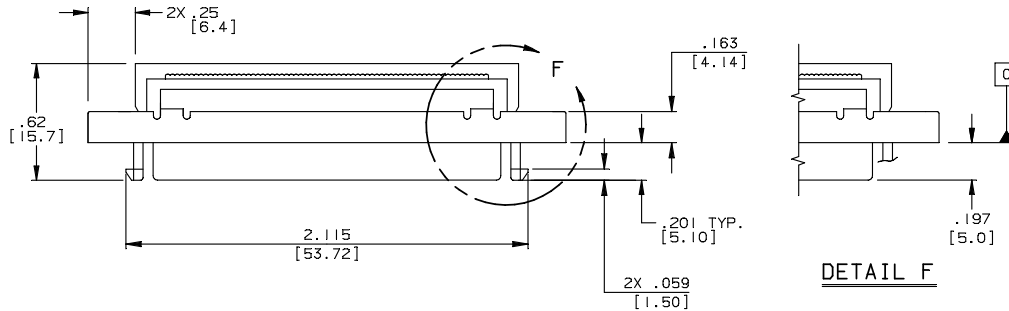


PART NO. CA-68NFDS-X-X-XX

REVISIONS				
LTR	DESCRIPTION	DATE	APPROVED	
A	INITIAL RELEASE SEE DO 4815	CP 04-16-02	A. J.	
B	SEE DO 4834	CP 05-02-02	A. J.	
C	SEE DO 6201	CP 09-12-06	I. M.	
D	SEE DO 7548	CP 12-03-19	T. L.	



CA - 68 NFDS - X - X - XX

NUMBER OF CONTACT POSITIONS

INSULATION DISPLACEMENT D-TYPE SOCKET

PLATING:

C = .000015 [.00038] GOLD CONTACT AREA
 E = .000030 [.00076] GOLD CONTACT AREA
 SEE BELOW FOR IDT AREA PLATING

STYLE:

0 = NO LATCH AND 4-40 THREADED NUT 3 = NO LATCH AND 2-56 THREADED NUT
 1 = LATCH AND 2-56 THREADED NUT 4 = LATCH AND 4-40 THREADED NUT

CONTACT MATERIAL:

BLANK = PHOSPHOR BRONZE, IDT PLATING: TIN
 BC = BERYLLIUM COPPER, IDT PLATING: GOLD FLASH

5. MEETS THE REQUIREMENTS OF THE EUROPEAN PARLIAMENT AND THE RESTRICTION OF THE USE OF CERTAIN HAZARDOUS SUBSTANCES IN ELECTRICAL AND ELECTRONIC EQUIPMENT. (RoHS)

4 THIS DRAWING SUPERSEDES DRAWING 620349 FOR THE CA-68NFDS-X-X-XX CONNECTOR ASSEMBLIES.
 3. FOR DETAIL SPECIFICATION SEE SPECIFICATION NO. 100196.

2. SPECIFICATION:

ENVIRONMENTAL:

TEMPERATURE RANGE: -55° C TO +105° C

MECHANICAL:

INSULATOR MATERIAL: GLASS FILLED POLYESTER
 COLOR BLACK, UL94V-0

CONTACT MATERIAL: SEE ORDERING NOMENCLATURE
 FRAME & LATCH MATERIAL: ZINC, NICKEL PLATE

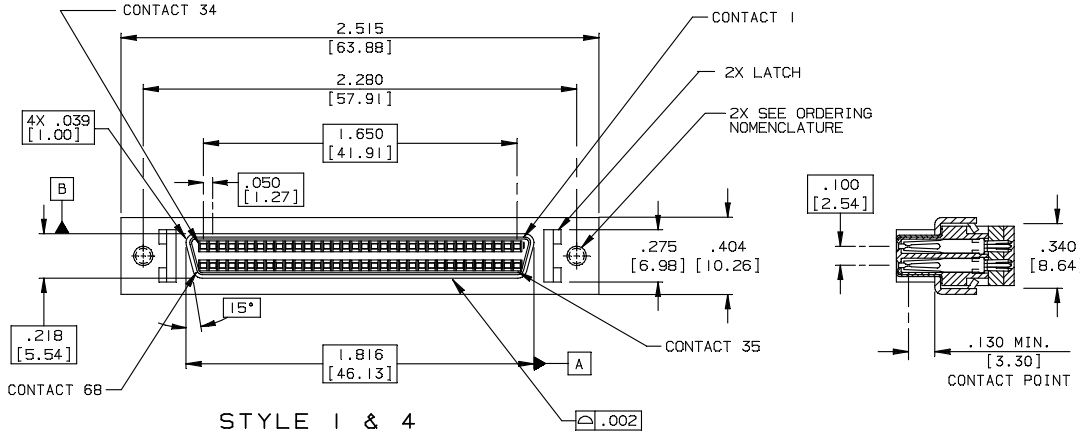
SHELL MATERIAL: STEEL, BRIGHT TIN PLATE OVER NICKEL
 DURABILITY: 500 CYCLES MIN.

ELECTRICAL:

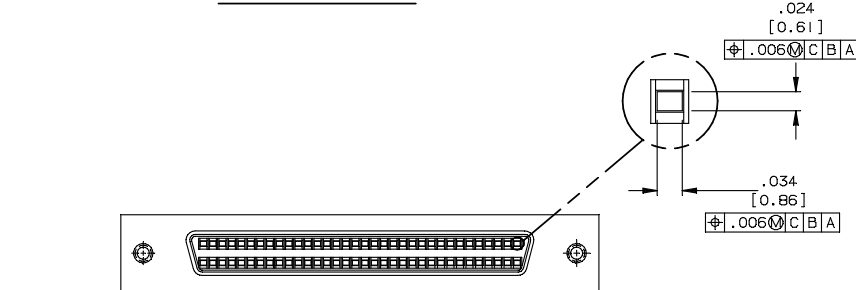
CURRENT RATING: 0.5 AMP
 DIELECTRIC WITHSTANDING VOLTAGE: 500 VDC FOR 1 MINUTE
 INSULATOR RESISTANCE: 1000 MEGOHMS MIN.
 CONTACT RESISTANCE: 1. 25 MILLIOHMS MAX MEASURED THROUGH INSULATION DISPLACEMENT PORTION AND MATING PIN
 EIA-364-B ENVIRONMENTAL CLASS 1.3
 2. 15 MILLIOHMS MAX THROUGH MALE/FEMALE CONTACT INTERFACE.

1. INTERPRET DIMENSIONS AND TOLERANCES PER ASME Y14.5M-1994

NOTES: UNLESS OTHERWISE SPECIFIED



STYLE 1 & 4



STYLE 0 & 3

DIMENSIONS ARE IN INCHES	APPROVALS	DATE	CA CIRCUIT ASSEMBLY CORP.	
TOLERANCES ARE:	DRAWN	4/16/02	3A VANDERBILT, IRVINE, CALIFORNIA 92618-2030	
DECIMALS ANGLES	CUONG P.		CONN ASSY-SHIELDED HIGH-DENSITY IDC SOCKET .050 CL - NFDS SERIES "ROHS"	
.XX ± .01 ± 1°	CHECKED	4/16/02	SIZE	CODE IDENT NO.
.XXX ± .005	A. JOCHEN		C	52072
DIMENSIONS IN BRACKETS (X.XX) ARE IN MILLIMETERS	THE INFORMATION AND DESIGN DISCLOSED HEREIN WAS ORIGINATED BY AND IS THE PROPERTY OF CIRCUIT ASSEMBLY CORPORATION. CIRCUIT ASSEMBLY CORPORATION RESERVES ALL PATENT, PROPRIETARY DESIGN, MANUFACTURING, REPRODUCTION, USE AND SALES RIGHTS THERE TO, AND TO ANY ARTICLE DISCLOSED HEREIN EXCEPT TO THE EXTENT RIGHTS ARE EXPRESSLY GRANTED TO OTHERS. THE FOREGOING DOES NOT APPLY TO VENDOR PROPRIETARY RIGHTS.		DRAWING NO.	REV.
DECIMALS ANGLES			610288	4 D
.X ± .25 ± 1°			SCALE: 2 : 1	SHEET 1 OF 1
.XX ± .13				
DO NOT SCALE DRAWING				