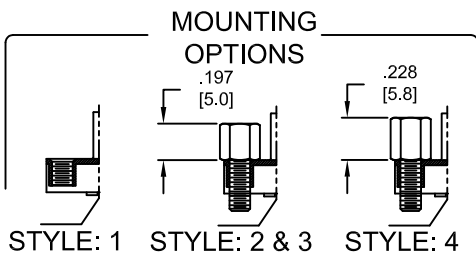
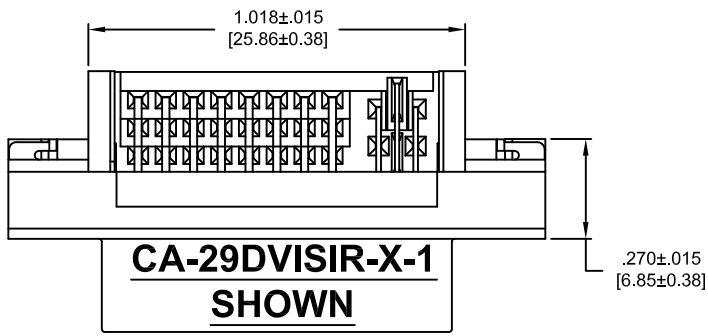


PART NO. CA-29DVISIR-X-X

REVISIONS				
LTR	DESCRIPTION	DATE	APPROVED	
A	INITIAL RELEASE SEE DO 3961	AJ 04-04-00	A.J.	
B	SEE DO 3989	AJ 04-19-00	B.W.	
C	SEE DO 4016	AJ 05-25-00	B.W.	
D	SEE DO 4024	JL 06-02-00	A.J.	
E	SEE DO 4037	JL 06-09-00	A.J.	
F	SEE DO 4714	CP 12-18-01	A.J.	
G	SEE DO 4735	CP 01-10-02	A.J.	
H	SEE DO 5294	CP 11-13-03	A.J.	
J	SEE DO 6171	CP 08-10-06	I.M.	
K	SEE DO 6180	CP 08-18-06	L.F.	
L	SEE DO 7530	CP 07-22-19	T.L.	



CA - 29 DVI S I X - X - X

NO OF PIN POSITIONS _____

DIGITAL VISUAL INTERFACE _____

SOCKET _____

PRODUCT TYPE: INTEGRATED DIGITAL/ANALOG _____

PROFILE: _____

R = RIGHT ANGLE
A = ATX FORK LOCK RIGHT ANGLE PCB LAYOUT

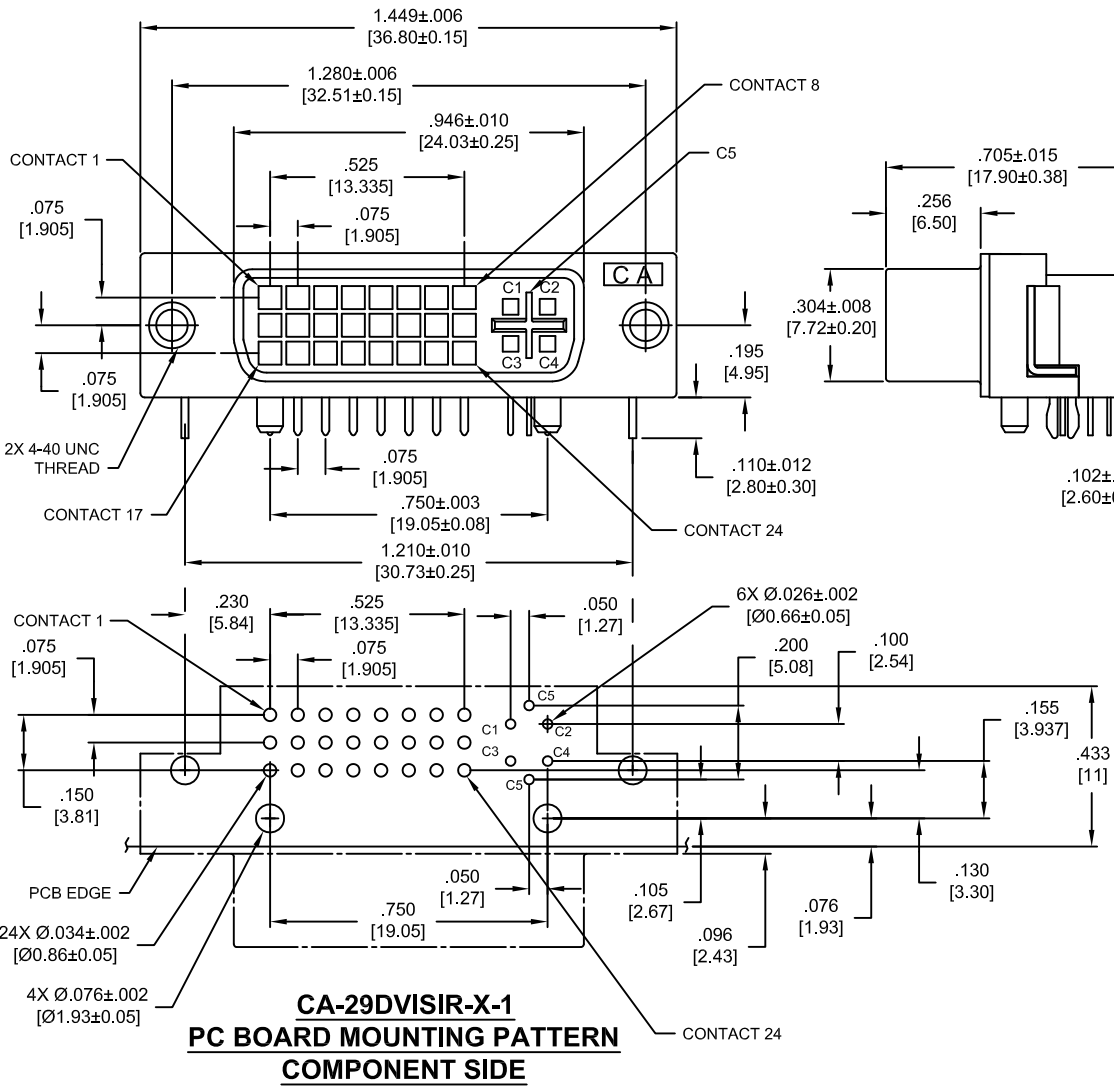
PLATING: _____

A = GOLD FLASH OVER NICKEL
C = .000015 [.00038] GOLD OVER NICKEL
F = .000030 [.00076] GOLD OVER NICKEL

MOUNTING OPTION STYLES: _____

- 1 = 4-40 UNC THREADED INSERT
 - 2 = 4-40 UNC HEX SCREWLOCK [5.0MM] .197" (2 PCS. PER CONNECTOR; PACKAGED SEPARATELY)
 - 3 = 4-40 UNC HEX SCREWLOCK [5.0MM] .197" (INSTALLED)
 - 4 = 4-40 UNC HEX SCREWLOCK [5.8MM] .228" (INSTALLED)
1. FOR SPECIFICATION AND PERFORMANCE CHARACTERISTICS SEE CA DWG 100252
 2. ENVIRONMENTAL:
TEMPERATURE RANGE -20°C TO +85°C
 3. ELECTRICAL:
RATED: 1.5A @ 40V AC (rms)
CONTACT RESISTANCE: 20 MILLIOHMS MAXIMUM
INSULATION RESISTANCE: 1000 MEGOHMS MINIMUM
DIELECTRIC WITHSTANDING VOLTAGE: 500V AC (rms)
 4. MECHANICAL:
MATING FORCE: 10 LB. [4.5 kg] MAXIMUM
UNMATING FORCE: 2.2 LB. [1 kg] MINIMUM, 8.8 LB. [4 kg] MAXIMUM
 5. MATERIAL:
HOUSING: GLASS FILLED THERMOPLASTIC, NATURAL, UL 94V-0
CONTACT: PHOSPHOR BRONZE
SHELL: ZINC ALLOY, NICKEL PLATED
BOARD LOCK: COPPER ALLOY, TIN PLATE
 6. MEETS THE REQUIREMENTS OF THE EUROPEAN PARLIAMENT AND THE RESTRICTION OF THE USE OF CERTAIN HAZARDOUS SUBSTANCES IN ELECTRICAL AND ELECTRONIC EQUIPMENT. (RoHS)

NOTES : UNLESS OTHERWISE SPECIFIED



CA-29DVISIR-X-1 PC BOARD MOUNTING PATTERN COMPONENT SIDE

DIMENSIONS ARE IN INCHES TOLERANCES ARE: DECIMALS ANGLES XX ±.010 ±3° XXX ±.005	APPROVALS	DATE	CIRCUIT ASSEMBLY CORP. 3A VANDERBILT, IRVINE, CALIFORNIA 92618-2030								
	DRAWN A. JOCHEN	3-31-00									
DIMENSIONS IN BRACKETS (XX) ARE IN MILLIMETERS TOLERANCES ARE: DECIMALS ANGLES X ±.25 ±3° XX ±.13	CHECKED A. JOCHEN	3-31-00	CONNECTOR ASSEMBLY-DVI SERIES INTEGRATED 29 - SOCKET, R/A 'RoHS'								
	DO NOT SCALE DRAWING										
THE INFORMATION AND DESIGN DISCLOSED HEREIN WAS ORIGINATED BY AND IS THE PROPERTY OF CIRCUIT ASSEMBLY CORPORATION. CIRCUIT ASSEMBLY CORPORATION RESERVES ALL RIGHTS THEREIN, AND TO ANY ARTICLE DISCLOSED HEREIN EXCEPT TO THE EXTENT RIGHTS ARE EXPRESSLY GRANTED TO OTHERS. THE FOREGOING DOES NOT APPLY TO VENDOR PROPRIETARY RIGHTS.		<table border="1"> <tr> <td>SIZE</td> <td>CODE IDENT NO.</td> <td>DRAWING NO.</td> <td>REV.</td> </tr> <tr> <td>C</td> <td>52072</td> <td>610239</td> <td>L</td> </tr> </table>		SIZE	CODE IDENT NO.	DRAWING NO.	REV.	C	52072	610239	L
SIZE	CODE IDENT NO.	DRAWING NO.	REV.								
C	52072	610239	L								
SCALE: 4:1		SHEET 1 OF 2									

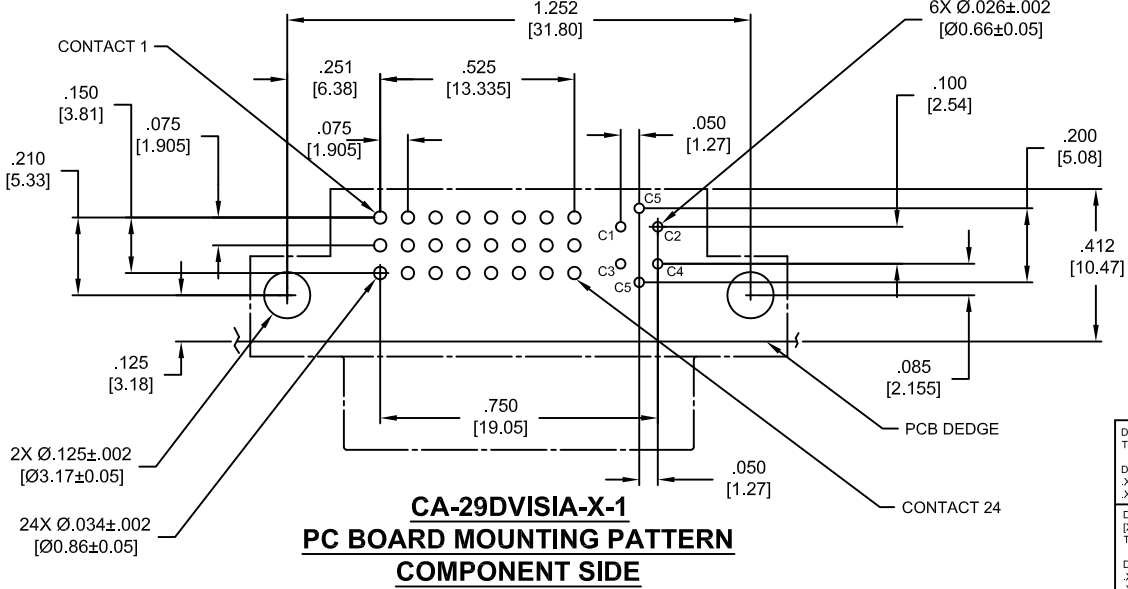
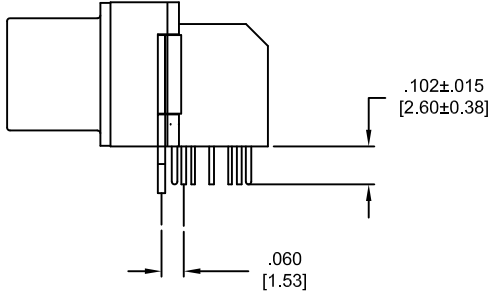
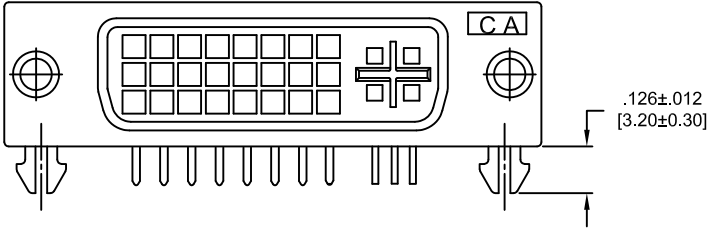
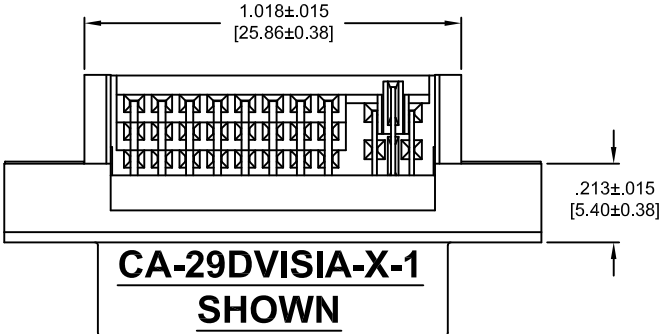
4

3

2

1

REVISIONS			
LTR	DESCRIPTION	DATE	APPROVED
	SEE SHEET 1 OF 2		



DIMENSIONS ARE IN INCHES TOLERANCES ARE:		APPROVALS		DATE
DECIMALS	ANGLES	DRAWN	A. JOCHEN	3-31-00
XX ±.010	±3°	CHECKED	A. JOCHEN	3-31-00
XXX ±.005		THE INFORMATION AND DESIGN DISCLOSED HEREIN WAS ORIGINATED BY AND IS THE PROPERTY OF CIRCUIT ASSEMBLY CORPORATION. CIRCUIT ASSEMBLY CORPORATION RESERVES ALL PATENT, PROPRIETARY, DESIGN, MANUFACTURING, REPRODUCTION, USE AND SALES RIGHTS THEREOF, AND TO ANY ARTICLE DISCLOSED HEREIN EXCEPT TO THE EXTENT RIGHTS ARE EXPRESSLY GRANTED TO OTHERS. THE FOREGOING DOES NOT APPLY TO VENDOR PROPRIETARY RIGHTS.		
DIMENSIONS IN BRACKETS [XX] ARE IN MILLIMETERS TOLERANCES ARE:		DO NOT SCALE DRAWING		
DECIMALS	ANGLES			
X ±.25	±3°			
XX ±.13				

CA CIRCUIT ASSEMBLY CORP. 3A VANDERBILT, IRVINE, CALIFORNIA 92618-2030			
CONNECTOR ASSEMBLY-DVI SERIES INTEGRATED 29 - SOCKET, R/A 'RoHS'			
SIZE	CODE IDENT NO.	DRAWING NO.	REV.
C	52072	610239	L
SCALE: 4:1		SHEET 2 OF 2	

4

3

2

1