

PART NO. CA-XX DHDC

REVISIONS

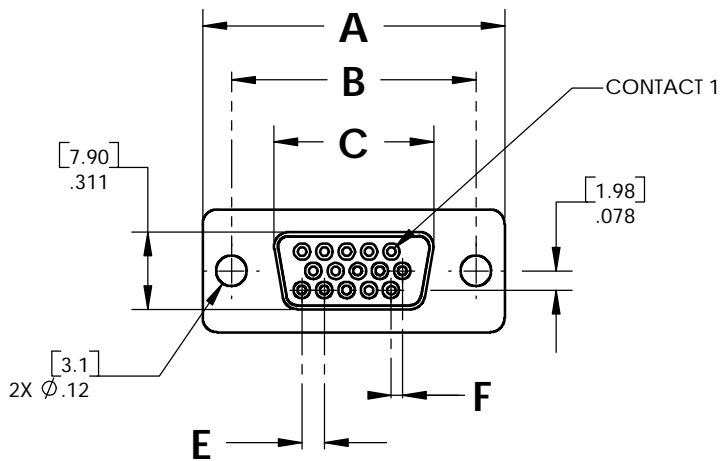
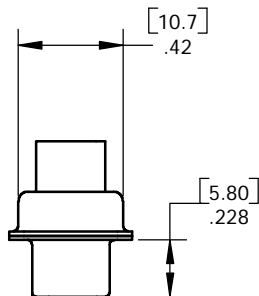
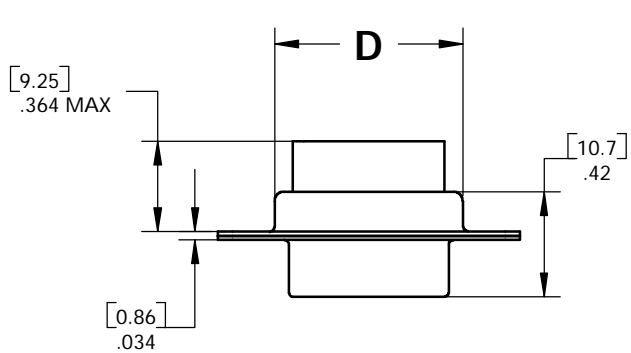
LTR	DESCRIPTION	DATE	APPROVED
A	INITIAL RELEASE SEE DO 3960	4/11/00	A.J.
B	SEE DO 4462	4/25/01	A.J.

CA-XX DHDC

NUMBER OF CONTACT POS

D-SUB, HIGH DENSITY SOCKET CRIMP

CONTACT SOLD SEPARATELY  
CONTACT PART NUMBER: CA-DHDC-A



SPECIFICATIONS

ENVIRONMENTAL

TEMPERATURE RANGE: -50°C TO +105°C

MECHANICAL

INSULATOR MATERIAL: GLASS FILLED POLYESTER, BLACK, UL94 V-0  
SHELL MATERIAL: STEEL, NICKEL PLATED  
CONTACT MATERIAL: PHOSPHOR BRONZE  
CONTACT PLATING: GOLD FLASH, NICKEL UNDERPLATING  
WIRE GAUGE RANGE: 28-22 AWG

ELECTRICAL

CURRENT RATING: 5 AMP

TABULATION:

POSITION	A		B		C		D		E		F	
	IN	MM	IN	MM	IN	MM	IN	MM	IN	MM	IN	MM
15	1.21	30.9	.98	25.0	.640	16.25	.76	19.3	.090	2.29	.0451	1.145
26	1.55	39.3	1.31	33.3	.967	24.55	1.09	27.7	.090	2.29	.0451	1.145
44	2.09	53.1	1.85	47.1	1.506	38.25	1.62	41.2	.090	2.29	.0451	1.145
62	2.73	69.5	2.50	63.5	2.156	54.75	2.26	57.5	.095	2.41	.0474	1.205

Dimensions are in inches  
Tolerances are:

Decimals Angles  
.XX ± .010 ± 3°  
.XXX ± .005

Dimensions in brackets  
are in millimeters.

Tolerances are:  
Decimals Angles  
.X ± .25 ± 3°  
.XX ± .13

DO NOT SCALE DRAWING

APPROVALS DATE

DRAWN	C.L.W.	4/11/00
CHECKED	A. JOCHEN	4/11/00

THE INFORMATION AND DESIGN DISCLOSED HEREIN WAS ORIGINATED BY AND IS THE PROPERTY OF CIRCUIT ASSEMBLY CORPORATION. CIRCUIT ASSEMBLY CORPORATION RESERVES ALL PATENT, PROPRIETARY, DESIGN, MANUFACTURING, REPRODUCTION, USE AND SALES RIGHTS THERETO, AND TO ANY ARTICLE DISCLOSED HEREIN EXCEPT TO THE EXTENT RIGHTS ARE EXPRESSLY GRANTED TO OTHERS. THE FOREGOING DOES NOT APPLY TO VENDOR PROPRIETARY RIGHTS.



CIRCUIT ASSEMBLY CORP.  
18 THOMAS ST., IRVINE, CALIFORNIA 92618-2777

CONNECTOR ASSEMBLY  
DHDC SERIES

SIZE	CODE IDENT NO.	DRAWING NO.	REV.
B	52072	610235	B
SCALE: 2 : 1		SHEET 1 OF 1	