

REVISIONS				
LTR	DESCRIPTION	DATE	APPROVED	
A	INITIAL RELEASE SEE DO 3959	CLW. 4-11-00	A.J.	
B	SEE DO 4010	JL 5-12-00	A.J.	
C	SEE DO 5054	CP 12-20-02	A.J.	



CA-XX DHSS

NUMBER OF CONTACT POS _____
 D-SUB, HIGH DENSITY SOCKET _____
 SOLDER _____

15, 26, 44 & 62 POSITION

78 POSITION

SPECIFICATIONS

ENVIRONMENTAL
 TEMPERATURE RANGE: -50°C TO +105°C

MECHANICAL

INSULATOR MATERIAL: GLASS FILLED PESTER, BLACK, UL94 V-0
 SHELL MATERIAL: STEEL, NICKEL PLATED
 CONTACT MATERIAL: PHOSPHOR BRONZE
 CONTACT PLATING: GOLD FLASH, NICKEL UNDERPLATING

ELECTRICAL

CURRENT RATING: 5 AMP

TABULATION:

POSITION	DIM A		DIM B		DIM C		DIM D		DIM E		DIM F	
	IN	MM	IN	MM	IN	MM	IN	MM	IN	MM	IN	MM
15	1.21	30.9	.98	25.0	.640	16.25	.76	19.3	.090	2.29	.0451	1.145
26	1.55	39.3	1.31	33.3	.967	24.55	1.09	27.7	.090	2.29	.0451	1.145
44	2.09	53.1	1.85	47.1	1.506	38.25	1.62	41.2	.090	2.29	.0451	1.145
62	2.73	69.5	2.50	63.5	2.156	54.75	2.26	57.5	.095	2.41	.0474	1.205
78	2.64	67.0	2.41	61.1	2.055	52.20	2.17	55.1	.095	2.41	.0474	1.205

1. ADDITIONAL PLATING OPTIONS AVAILABLE

NOTES: UNLESS OTHERWISE SPECIFIED

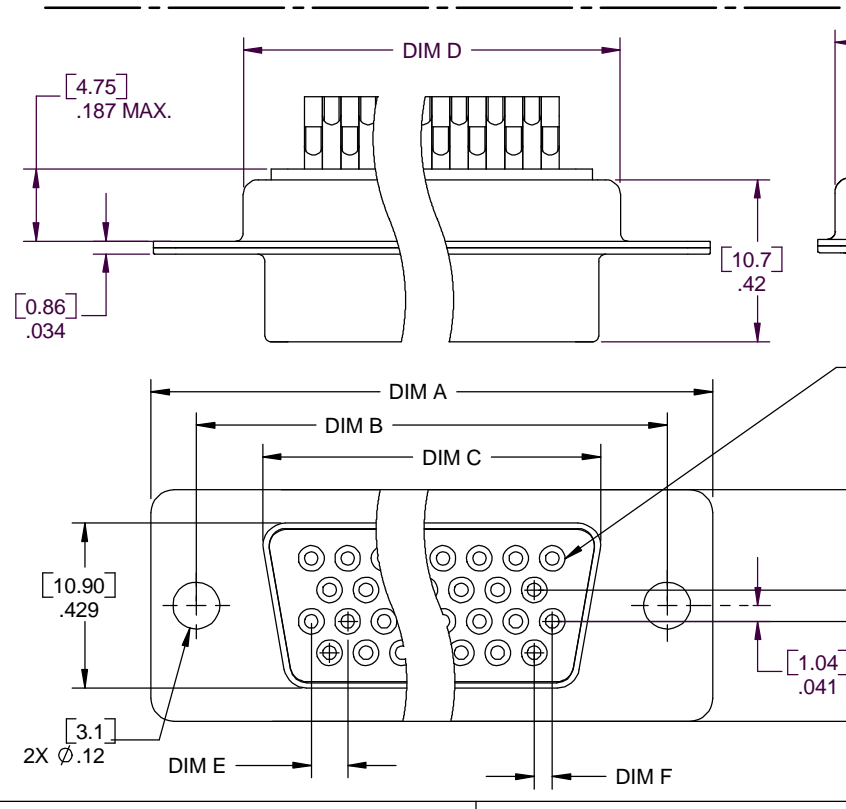
DIMENSIONS ARE IN INCHES TOLERANCES ARE:	APPROVALS	DATE
DECIMALS .XX ±.010 ANGLES ±3° .XXX ±.005	DRAWN C.L.W.	4/11/00
DIMENSIONS IN BRACKETS [X.XX] ARE IN MILLIMETERS TOLERANCES ARE:	CHECKED A.JOCHEN	4/11/00
DECIMALS .X ±.25 .XX ±.13	<small>THE INFORMATION AND DESIGN DISCLOSED HEREIN WAS ORIGINATED BY AND IS THE PROPERTY OF CIRCUIT ASSEMBLY CORPORATION. CIRCUIT ASSEMBLY CORPORATION RESERVES ALL PATENT, PROPRIETARY, DESIGN, MANUFACTURING, REPRODUCTION, USE AND SALES RIGHTS THERE TO, AND TO ANY ARTICLE DISCLOSED HEREIN EXCEPT TO THE EXTENT RIGHTS ARE EXPRESSLY GRANTED TO OTHERS. THE FOREGOING DOES NOT APPLY TO VENDOR PROPRIETARY RIGHTS.</small>	
DO NOT SCALE DRAWING		

CIRCUIT ASSEMBLY CORP.
 18 THOMAS ST., IRVINE, CALIFORNIA 92618-2777

CONNECTOR ASSEMBLY DHSS SERIES

SIZE	CODE IDENT NO.	DRAWING NO.	REV.
C	52072	610234	C

SCALE: 4:1 SHEET 1 OF 1



DIMENSIONS ARE IN INCHES TOLERANCES ARE:	APPROVALS	DATE
DECIMALS .XX ±.010 ANGLES ±3° .XXX ±.005	DRAWN C.L.W.	4/11/00
DIMENSIONS IN BRACKETS [X.XX] ARE IN MILLIMETERS TOLERANCES ARE:	CHECKED A.JOCHEN	4/11/00
DECIMALS .X ±.25 .XX ±.13	<small>THE INFORMATION AND DESIGN DISCLOSED HEREIN WAS ORIGINATED BY AND IS THE PROPERTY OF CIRCUIT ASSEMBLY CORPORATION. CIRCUIT ASSEMBLY CORPORATION RESERVES ALL PATENT, PROPRIETARY, DESIGN, MANUFACTURING, REPRODUCTION, USE AND SALES RIGHTS THERE TO, AND TO ANY ARTICLE DISCLOSED HEREIN EXCEPT TO THE EXTENT RIGHTS ARE EXPRESSLY GRANTED TO OTHERS. THE FOREGOING DOES NOT APPLY TO VENDOR PROPRIETARY RIGHTS.</small>	
DO NOT SCALE DRAWING		

CIRCUIT ASSEMBLY CORP.
 18 THOMAS ST., IRVINE, CALIFORNIA 92618-2777

CONNECTOR ASSEMBLY DHSS SERIES

SIZE	CODE IDENT NO.	DRAWING NO.	REV.
C	52072	610234	C

SCALE: 4:1 SHEET 1 OF 1