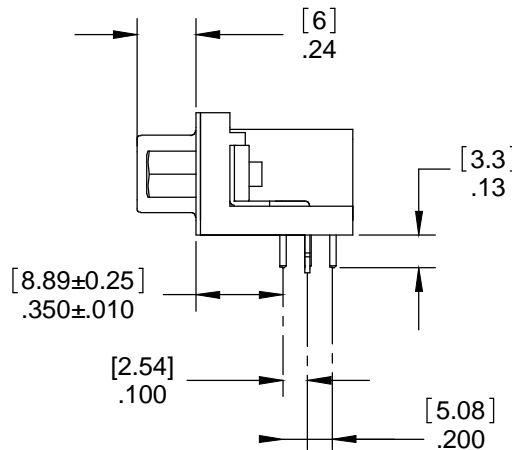
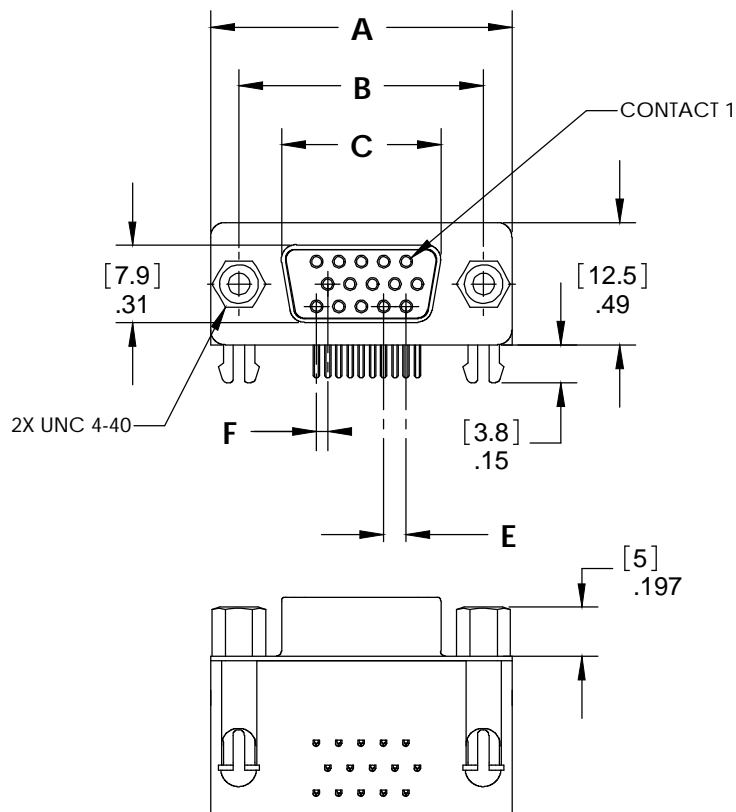


PART NO. CA-XXDHDSR-11-X

REVISIONS

LTR	DESCRIPTION	DATE	APPROVED
A	INITIAL RELEASE SEE DO 3951	CLW 4-4-00	A.J.
B	SEE DO 4011	CLW 5-12-00	A.J.
C	SEE DO 6644	CP 4-25-08	A.J.



CA-XXDHDSR-11-X

NUMBER OF CONTACT POS _____
 D-SUB, HIGH DENSITY SOCKET RIGHT ANGLE
 MOUNTING OPTION _____
 11= BOARDLOCK AND 4-40 HEX SCREWLOCK
 FASTENER OPTIONS _____
 BLANK = 4-40 HEX SCREWLOCK INSTALLED
 N = 4-40 HEX SCREWLOCK PACKAGED SEPARATELY

TABULATION:

POSITION	A		B		C		E		F	
	IN	MM	IN	MM	IN	MM	IN	MM	IN	MM
15	1.21	30.8	.984	25.00	.642	16.30	.090	2.29	.0451	1.145
26	1.54	39.2	1.311	33.30	.969	24.60	.090	2.29	.0451	1.145
44	2.09	53.1	1.854	47.10	1.508	38.30	.090	2.29	.0451	1.145
62	2.73	69.4	2.500	63.50	2.157	54.80	.095	2.41	.0474	1.205

NOTES: UNLESS OTHERWISE SPECIFIED

- INSULATOR MATERIAL: GLASS FILLED THERMOPLASTIC, UL94 V-0
INSULATOR COLOR: BLACK
- CONTACT MATERIAL: COPPER ALLOY
CONTACT PLATING: GOLD FLASH
- ADDITIONAL PLATING OPTIONS AVAILABLE

Dimensions are in inches
 Tolerances are:
 Decimals Angles
 .XX ± .010 ± 3°
 .XXX ± .005
 Dimensions in brackets
 are in millimeters.
 Tolerances are:
 Decimals Angles
 .X ± .25 ± 3°
 .XX ± .13
 DO NOT SCALE DRAWING

APPROVALS	DATE
DRAWN C.L.W.	4/4/00
CHECKED A.JOCHEN	4/4/00

THE INFORMATION AND DESIGN DISCLOSED HEREIN WAS ORIGINATED BY AND IS THE PROPERTY OF CIRCUIT ASSEMBLY CORPORATION. CIRCUIT ASSEMBLY CORPORATION RESERVES ALL PATENT, PROPRIETARY, DESIGN, MANUFACTURING, REPRODUCTION, USE AND SALES RIGHTS THERETO, AND TO ANY ARTICLE DISCLOSED HEREIN EXCEPT TO THE EXTENT RIGHTS ARE EXPRESSLY GRANTED TO OTHERS. THE FOREGOING DOES NOT APPLY TO VENDOR PROPRIETARY RIGHTS.

CA CIRCUIT ASSEMBLY CORP.
 18 THOMAS ST., IRVINE, CALIFORNIA 92618-2777

CONNECTOR ASSEMBLY
 DHDSR SERIES

SIZE	CODE IDENT NO.	DRAWING NO.	REV.
B	52072	610232	C
SCALE: 2 : 1		SHEET 1 OF 1	