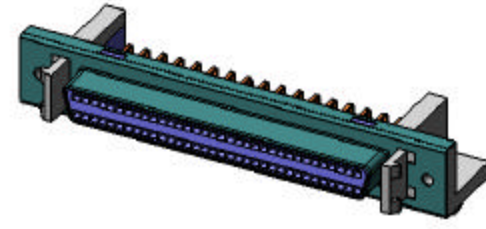


PART NO. CA-XXHDSR-X-X

REVISIONS				
LTR	DESCRIPTION	DATE	APPROVED	
A	INITIAL RELEASE SEE DO 3489	DL 5-06-99	I.M.	
B	SEE DO 4961	CP 9-05-02	A.J.	
C	SEE DO 5429	CP 3-19-04	A.J.	



# CA-XXHDSR-X-X

NO. OF POSITIONS

HIGH DENSITY, D-SHAPE SOCKET  
RIGHT ANGLE

PLATING:

- B = .000010 [.00025] SELECTIVE GOLD
- F = .000030 [.00076] SELECTIVE GOLD

MOUNTING OPTION:

- 0 = 4/40 THREADED HOLE
- 1 = 2/56 THREADED HOLE & KEEPER
- 3 = 2/56 THREADED HOLE
- 4 = 4/40 THREADED HOLE & KEEPER

### 3. SPECIFICATIONS :

- ENVIRONMENTAL :
- TEMPERATURE : -55 °C TO +105 °C
- ELECTRICAL :
- CURRENT RATING : 1 AMP
  - DIELECTRIC WITHSTANDING VOLTAGE : 500V AC RMS FOR 1 MINUTE
  - INSULATOR RESISTANCE : 500 MEGOHMS MIN.
  - CONTACT RESISTANCE : 35 MILLIOHMS MAX.

### 2. PLATING :

- CONTACT :
- CONTACT AREA : GOLD (SEE PART NO.)
  - TAIL AREA : TIN/LEAD ALLOY
  - BOARD LOCK : TIN OR TIN/LEAD OVER COPPER

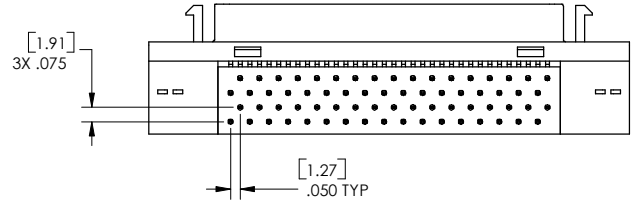
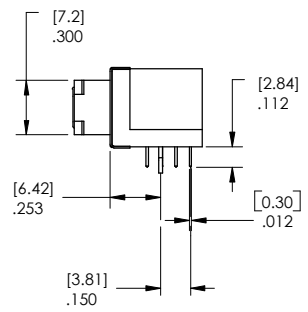
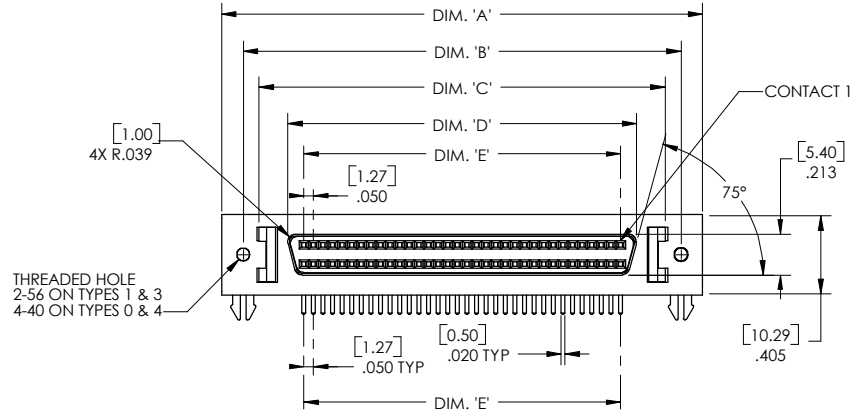
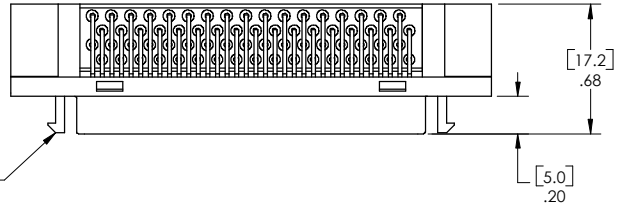
### 1. MATERIAL :

- INSULATOR : GLASS FILLED THERMOPLASTIC UL94V-0
- CONTACT : COPPER ALLOY
- BOARD LOCK : COPPER ALOY

NOTES: UNLESS OTHERWISE SPECIFIED

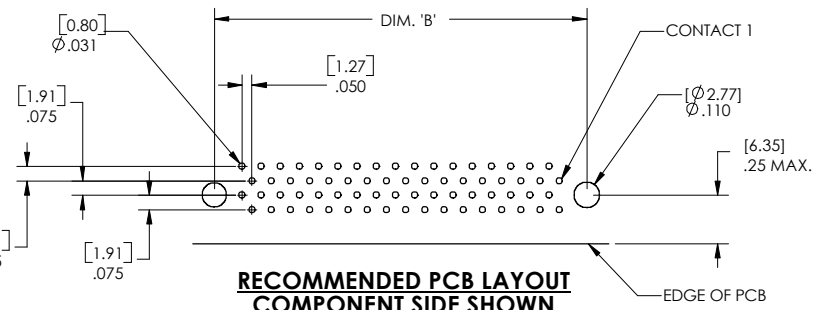
DIMENSIONS ARE IN INCHES TOLERANCES ARE:	<b>APPROVALS</b>	<b>DATE</b>	<b>CIRCUIT ASSEMBLY CORP.</b> 18 THOMAS ST., IRVINE, CALIFORNIA 92618-2777
	DRAWN D. LANG	5-6-99	
DECIMALS .XX ±.010	CHECKED I. MORRELL	5-6-99	<b>CONNECTOR ASSEMBLY CA-XXHDSR-X-X</b>
ANGLES ±3°	THE INFORMATION AND DESIGN DISCLOSED HEREIN WAS ORIGINATED BY AND IS THE PROPERTY OF CIRCUIT ASSEMBLY CORPORATION. CIRCUIT ASSEMBLY CORPORATION RESERVES ALL PATENT, PROPRIETARY, DESIGN, MANUFACTURING, REPRODUCTION, USE AND SALES RIGHTS THERE TO, AND TO ANY ARTICLES DISCLOSED HEREIN EXCEPT TO THE EXTENT RIGHTS ARE EXPRESSLY GRANTED TO OTHERS. THE FOREGOING DOES NOT APPLY TO VENDOR PROPRIETARY RIGHTS.		
DIMENSIONS IN BRACKETS [X.XX] ARE IN MILLIMETERS TOLERANCES ARE:	DECIMALS .X ±.25	ANGLES ±3°	DO NOT SCALE DRAWING
SIZE C		CODE IDENT NO. 52072	DRAWING NO. 610199
SCALE: 4:1		REV. C	
		SHEET 1 OF 1	

# CA-XXHDSR-X-X



### TABULATION :

NO. OF POSITIONS	DIM. 'A'	DIM. 'B'	DIM. 'C'	DIM. 'D'	DIM. 'E'
50	2.063 [52.4]	1.830 [46.48]	1.665 [42.3]	1.366 [34.70]	1.200 [30.48]
68	2.505 [63.63]	2.280 [57.91]	2.115 [53.73]	1.816 [46.13]	1.65 [41.91]



### RECOMMENDED PCB LAYOUT COMPONENT SIDE SHOWN