

PART NO. CA-40ATAS-X-XXX

ORDERING NOMENCLATURE:

CA - 40 ATAS - X - X X X

NUMBER OF CONTACT POS

AT ATTACHMENT SOCKET

PLATING:

- A = CONTACT AREA: GOLD FLASH
- C = CONTACT AREA: .000015 [.00038] GOLD
- D = CONTACT AREA: .000005 [.00013] GOLD OVER .000075 [.00191] NICKEL
- IDC AREA: .000150 [.00381] TIN

STYLE NUMBER:

- 1 = SYSTEM BOARD CONNECTOR (BLUE, EVEN GROUND)
- 2 = PRIMARY CONNECTOR (BLACK, EVEN GROUND)
- 3 = SECONDARY CONNECTOR (GRAY, EVEN GROUND)
- 4 = SYSTEM BOARD CONNECTOR (BLUE, ODD GROUND)
- 5 = PRIMARY CONNECTOR (BLACK, ODD GROUND)
- 6 = SECONDARY CONNECTOR (GRAY, ODD GROUND)

POLARIZATION:

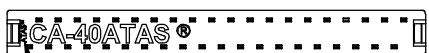
- 0 = NO POLARIZING TAB
- 1 = SINGLE POLARIZING TAB

KEYPIN:

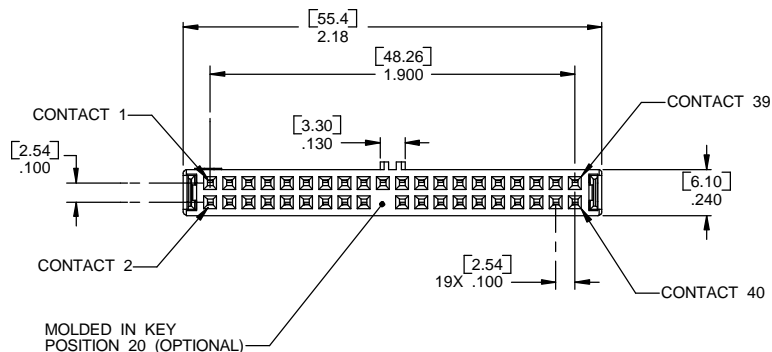
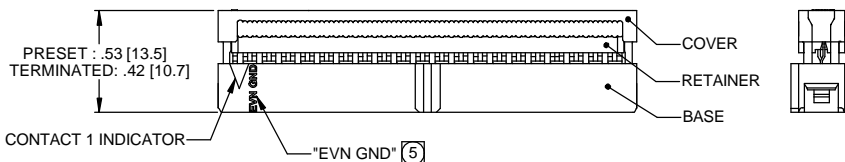
- 0 = POSITION 20 OPEN
- 1 = POSITION 20 MOLDED OVER

CA-40ATAS-X-111 SHOWN

- SYSTEMS BOARD CONNECTOR
- BASE COLOR: BLUE
- COVER AND RETAINER COLOR: BLACK
- IDC PORTION OF CONTACT 34 REMOVED



ATAS LOGO AND TRADE MARK, POLARIZING TAB (OPTIONAL)



MOLDED IN KEY POSITION 20 (OPTIONAL)

LTR	DESCRIPTION	DATE	APPROVED
L	SEE DO 5816	07-05-05	CP L.F.
M	SEE DO 6187	08-28-06	CP I.M.

REVISIONS			
LTR	DESCRIPTION	DATE	APPROVED
A	INITIAL RELEASE SEE DO 2877	BK 11-19-97	A.J.
B	SEE DO 2927	PH 1-30-98	A.J.
C	SEE DO 3202	PH 9-29-98	A.J.
D	SEE DO 3244	PH 11-3-98	A.J.
E	SEE DO 3281	DL 12-3-98	I.M.
F	SEE DO 3656	DL 7-8-99	A.J.
G	SEE DO 3668	DL 7-12-99	A.J.
H	SEE DO 3804	DL 12-7-99	A.J.
J	SEE DO 3843	DL 1-14-00	A.J.
K	SEE DO 5413	CP 3-02-04	A.J.

- 1XX CONNECTOR CONTACTS AND SIGNAL NAMES

CONT. #	SIGNAL NAME	80 COND. WIRE	CABLE WIRE	SIGNAL NAME	CONT. #	CONT. #	SIGNAL NAME	80 COND. WIRE	CABLE WIRE	SIGNAL NAME	CONT. #
1	RESET	1	21	DD3	11	21	DMARQ	41	61	INTRQ	31
X	GROUND	2	22	GROUND	X	X	GROUND	42	62	GROUND	X
X	GROUND	3	23	DD12	12	22	GROUND	43	63	IQCS16	32
X	GROUND	4	24	GROUND	X	X	GROUND	44	64	GROUND	X
3	DD7	5	25	DD2	13	23	DIOW	45	65	DAI	33
X	GROUND	6	26	GROUND	X	X	GROUND	46	66	GROUND	X
4	DD8	7	27	DD13	14	24	GROUND	47	NC - 67	GROUND	34
X	GROUND	8	28	GROUND	X	X	GROUND	48	68	GROUND	X
5	DD6	9	29	DD1	15	25	DIOR	49	69	DAO	35
X	GROUND	10	30	GROUND	X	X	GROUND	50	70	GROUND	X
6	DD9	11	31	DD14	16	26	GROUND	51	71	DA2	36
X	GROUND	12	32	GROUND	X	X	GROUND	52	72	GROUND	X
7	DD5	13	33	DD0	17	27	IORDY	53	73	CS1FX	37
X	GROUND	14	34	GROUND	X	X	GROUND	54	74	GROUND	X
8	DD10	15	35	DD15	18	28	CSEL	55	75	CS3FX	38
X	GROUND	16	36	GROUND	X	X	GROUND	56	76	GROUND	X
9	DD4	17	37	GROUND	19	29	DMACK	57	77	DASP	39
X	GROUND	18	38	GROUND	X	X	GROUND	58	78	GROUND	X
10	DD11	19	39	KEYPIN	20	30	GROUND	59	79	GROUND	40
X	GROUND	20	40	GROUND	X	X	GROUND	60	80	GROUND	X

SPECIFICATIONS:

ENVIRONMENTAL:

TEMPERATURE RANGE : -55 °C TO 105 °C

ELECTRICAL:

VOLTAGE RATING : 30 VAC

CURRENT RATING : 5 AMPS/CONDUCTOR

INSULATION RESISTANCE : 500 MEGAOHMS EIA364-21

CURRENT CAPACITY OF GROUND BUS : 3.5 AMPS

PHYSICAL:

PHYSICAL SHOCK : 30 G's EIA364-27

DURABILITY : 500 CYCLES

8. MEETS THE REQUIREMENTS OF DIRECTIVE 2002/95/EC OF THE EUROPEAN PARLIAMENT AND OF THE COUNCIL OF 27 JANUARY 2003 ON THE RESTRICTION OF THE USE OF CERTAIN HAZARDOUS SUBSTANCES IN ELECTRICAL AND ELECTRONIC EQUIPMENT (RoHS).

7. FOR DETAIL SPECIFICATION SEE CA DRAWING NO. 100246.

6. MATERIAL:

INSULATOR: GLASS FILLED POLYESTER, PBT, UL94V-0

CONTACT: COPPER ALLOY

5 DENOTES EVEN NUMBERED CABLE CONDUCTORS ARE GROUNDED

4 FOR ODD GROUNDING CONFIGURATIONS, REFER TO DRAWING NUMBER 610202

3. CABLE: 80 CONDUCTOR, .025 CENTERLINE, 30 AWG

2 X = COMMON GROUND BUS CONNECTIONS

1 SIGNAL NAMES ARE FOR REFERENCE ONLY. REFER TO THE FOLLOWING INDUSTRY DOCUMENTS FOR A COMPLETE DESCRIPTION:

- X3.221 - 1994 AT ATTACHMENT INTERFACE
- X3.279 - 1996 AT ATTACHMENT INTERFACE WITH EXTENSIONS
- X3.298 AT ATTACHMENT -3
- X3T13/1153 AT A/ATAPI -4

NOTES: UNLESS OTHERWISE SPECIFIED

DIMENSIONS ARE IN INCHES TOLERANCES ARE:

DECIMALS ANGLES .XX ±.010 ±3° .XXX ±.005

DIMENSIONS IN BRACKETS [X.XX] ARE IN MILLIMETERS TOLERANCES ARE:

DECIMALS ANGLES .X ±.25 ±3° .XX ±.13

DO NOT SCALE DRAWING

APPROVALS DRAWN B.KNERR DATE 11-19-97

CHECKED A.JOCHEN DATE 11-19-97

THE INFORMATION AND DESIGN DISCLOSED HEREIN WAS ORIGINATED BY AND IS THE PROPERTY OF CIRCUIT ASSEMBLY CORPORATION. CIRCUIT ASSEMBLY CORPORATION RESERVES ALL PATENT, PROPRIETARY, DESIGN, MANUFACTURING, REPRODUCTION, USE AND SALES RIGHTS HERETO, AND TO ANY APPLICABLE DISCLOSED HEREIN EXCEPT TO THE EXTENT RIGHTS ARE EXPRESSLY GRANTED TO OTHERS. THE FOREGOING DOES NOT APPLY TO VENDOR PROPRIETARY RIGHTS.

CIRCUIT ASSEMBLY CORP. 18 THOMAS ST., IRVINE, CALIFORNIA 92618-2777

CONNECTOR ASSEMBLY ATAS SERIES

SIZE C	CODE IDENT NO. 52072	DRAWING NO. 610191	REV. M
--------	----------------------	--------------------	--------

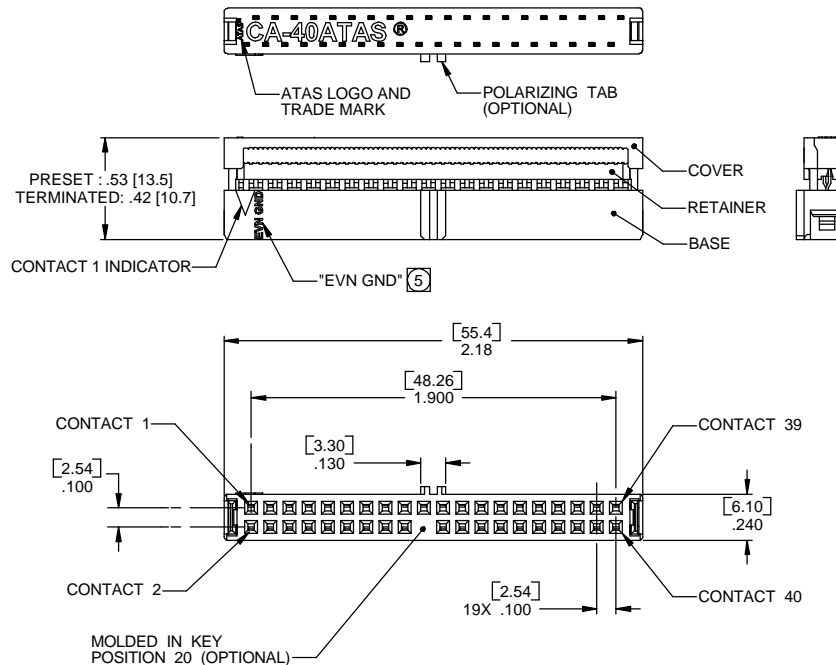
SCALE: 2:1

SHEET 1 OF 3

REVISIONS			
LTR	DESCRIPTION	DATE	APPROVED
	SEE SHEET 1 OF 3		

CA-40ATAS-X-211 SHOWN

- DEVICE 0 - PRIMARY CONNECTOR
- BASE COLOR: BLACK
- COVER AND RETAINER COLOR: BLACK



- 2XX CONNECTOR CONTACTS AND SIGNAL NAMES 1

CONT. #	SIGNAL NAME	80 COND. CABLE WIRE	SIGNAL NAME	CONT. #	CONT. #	SIGNAL NAME	80 COND. CABLE WIRE	SIGNAL NAME	CONT. #
X	RESET	1	DD3	11		DMARQ	41	INTRQ	31
X	GROUND	2	GROUND		X	GROUND	42	GROUND	X
X	GROUND	3	DD12	12	X	GROUND	43	IQCS16	32
X	GROUND	4	GROUND		X	GROUND	44	GROUND	X
3	DD7	5	DD2	13		DIOW	45	DAI	33
X	GROUND	6	GROUND		X	GROUND	46	GROUND	X
4	DD8	7	DD13	14	X	GROUND	47	PDIAG	34
X	GROUND	8	GROUND		X	GROUND	48	GROUND	X
5	DD6	9	DD1	15		DIOR	49	DAO	35
X	GROUND	10	GROUND		X	GROUND	50	GROUND	X
6	DD9	11	DD14	16	X	GROUND	51	DA2	36
X	GROUND	12	GROUND		X	GROUND	52	GROUND	X
7	DD5	13	DD0	17		IORDY	53	CS1FX	37
X	GROUND	14	GROUND		X	GROUND	54	GROUND	X
8	DD10	15	DD15	18		CSEL	55	CS3FX	38
X	GROUND	16	GROUND		X	GROUND	56	GROUND	X
9	DD4	17	DD4	19	X	DMACK	57	DASP	39
X	GROUND	18	GROUND		X	GROUND	58	GROUND	X
10	DD11	19	KEYPIN	20	X	GROUND	59	GROUND	40
X	GROUND	20	GROUND		X	GROUND	60	GROUND	X

DIMENSIONS ARE IN INCHES TOLERANCES ARE:

DECIMALS .XX ±.010 ANGLES ±3° .XXX ±.005

DIMENSIONS IN BRACKETS [X.XX] ARE IN MILLIMETERS TOLERANCES ARE:

DECIMALS .X ±.25 ANGLES ±3° .XXX ±.13

DO NOT SCALE DRAWING

APPROVALS	DATE
DRAWN B.KNERR	11-19-97

CHECKED A.JOCHEN	11-19-97
------------------	----------

THE INFORMATION AND DESIGN DISCLOSED HEREIN WAS ORIGINATED BY AND IS THE PROPERTY OF CIRCUIT ASSEMBLY CORPORATION. CIRCUIT ASSEMBLY CORPORATION RESERVES ALL PATENT, PROPRIETARY, DESIGN, MANUFACTURING, REPRODUCTION, USE AND SALES RIGHTS HERETO, AND TO ANY ARTICLES DISCLOSED HEREIN EXCEPT TO THE EXTENT RIGHTS ARE EXPRESSLY GRANTED TO OTHERS. THE FOREGOING DOES NOT APPLY TO VENDOR PROPRIETARY RIGHTS.

CA CIRCUIT ASSEMBLY CORP.
18 THOMAS ST., IRVINE, CALIFORNIA 92618-2777

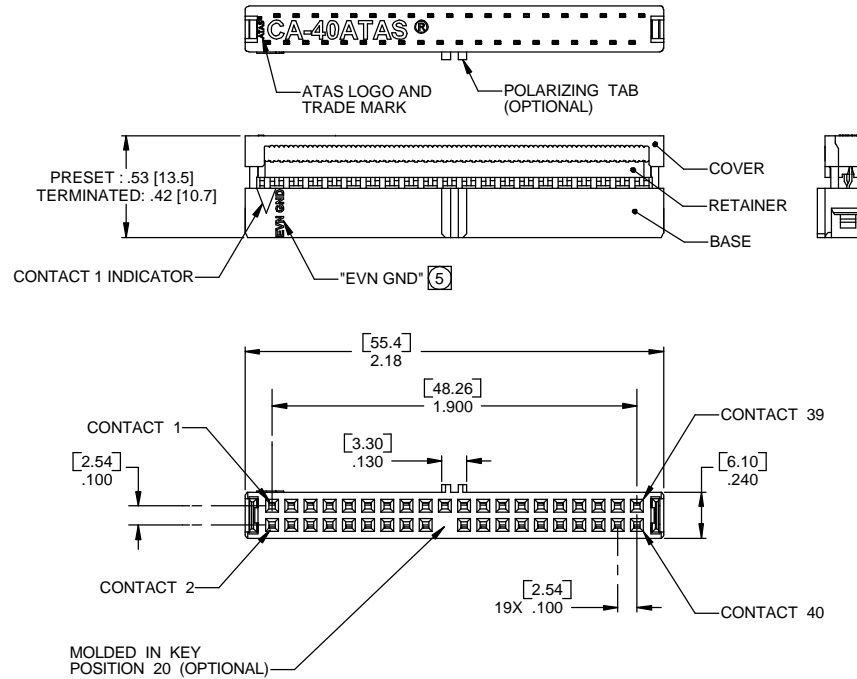
CONNECTOR ASSEMBLY ATAS SERIES

SIZE C	CODE IDENT NO. 52072	DRAWING NO. 610191	REV. M
SCALE: 2:1		SHEET 2 OF 3	

REVISIONS			
LTR	DESCRIPTION	DATE	APPROVED
	SEE SHEET 1 OF 3		

CA-40ATAS-X-311 SHOWN

- SECONDARY CONNECTOR (CABLE SELECT)
- BASE COLOR: GRAY
- COVER AND RETAINER COLOR: BLACK
- IDC PORTION OF CONTACT 28 REMOVED



- 3XX CONNECTOR CONTACTS AND SIGNAL NAMES ①

②	CONT. #	SIGNAL NAME	WIRE	80 COND. CABLE WIRE	SIGNAL NAME	CONT. #	②	②	CONT. #	SIGNAL NAME	WIRE	80 COND. CABLE WIRE	SIGNAL NAME	CONT. #	②
	1	RESET	1	21	DD3	11			21	DMARQ	41	61	INTRQ	31	
X		GROUND	2	22	GROUND		X	X		GROUND	42	62	GROUND		X
X	2	GROUND	3	23	DD12	12		X	22	GROUND	43	63	IQCS16	32	
X		GROUND	4	24	GROUND		X	X		GROUND	44	64	GROUND		X
	3	DD7	5	25	DD2	13			23	DIOW	45	65	DAI	33	
X		GROUND	6	26	GROUND		X	X		GROUND	46	66	GROUND		X
	4	DD8	7	27	DD13	14		X	24	GROUND	47	67	PDIAG	34	
X		GROUND	8	28	GROUND		X	X		GROUND	48	68	GROUND		X
	5	DD6	9	29	DD1	15			25	DIOR	49	69	DAO	35	
X		GROUND	10	30	GROUND		X	X		GROUND	50	70	GROUND		X
	6	DD9	11	31	DD14	16		X	26	GROUND	51	71	DA2	36	
X		GROUND	12	32	GROUND		X	X		GROUND	52	72	GROUND		X
	7	DD5	13	33	DD0	17			27	IORDY	53	73	CS1FX	37	
X		GROUND	14	34	GROUND		X	X		GROUND	54	74	GROUND		X
	8	DD10	15	35	DD15	18			28	REMOVED	55 - NC	75	CS3FX	38	
X		GROUND	16	36	GROUND		X	X		GROUND	56	76	GROUND		X
	9	DD4	17	37	GROUND	19	X		29	DMACK	57	77	DASP	39	
X		GROUND	18	38	GROUND		X	X		GROUND	58	78	GROUND		X
	10	DD11	19	39	KEYPIN	20		X	30	GROUND	59	79	GROUND	40	X
X		GROUND	20	40	GROUND		X	X		GROUND	60	80	GROUND		X

DIMENSIONS ARE IN INCHES
TOLERANCES ARE:
DECIMALS .XX ±.010
ANGLES ±3°
.XXX ±.005

DIMENSIONS IN BRACKETS
[X.XX] ARE IN MILLIMETERS
TOLERANCES ARE:
DECIMALS .X ±.25
ANGLES ±3°
.XX ±.13

DO NOT SCALE DRAWING

APPROVALS	DATE
DRAWN B.KNERR	11-19-97
CHECKED A.JOCHEN	11-19-97

CIRCUIT ASSEMBLY CORP.
18 THOMAS ST., IRVINE, CALIFORNIA 92618-2777

CONNECTOR ASSEMBLY
ATAS SERIES
"ROHS COMPLIANT"

SIZE C	CODE IDENT NO. 52072	DRAWING NO. 610191	REV. M
--------	----------------------	--------------------	--------

SCALE: 2:1 SHEET 3 OF 3