

4

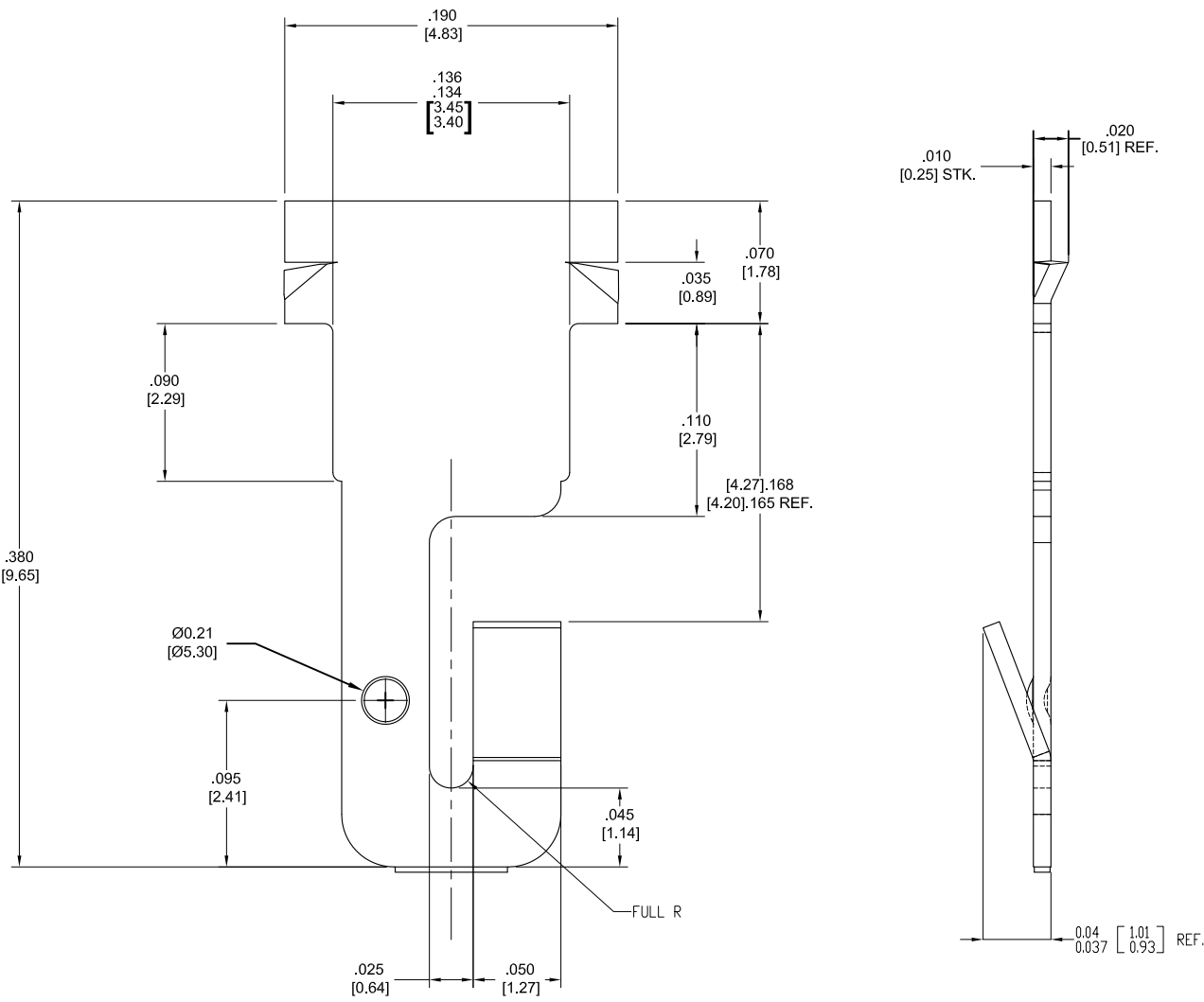
3

2

1

PART NO. CA-630061 (IDS2-C)

REVISIONS			
LTR	DESCRIPTION	DATE	APPROVED
A	INITIAL RELEASE SEE DO 7631	C.P. 09-16-21	T.C.



2. MATERIAL: STAINLESS STEEL, ALLOY 302 3/4 HARD

1. MEETS THE REQUIREMENTS OF THE EUROPEAN PARLIAMENT AND THE RESTRICTION OF THE USE OF CERTAIN HAZARDOUS SUBSTANCES IN ELECTRICAL AND ELECTRONIC EQUIPMENT. (RoHS)

NOTES: UNLESS OTHERWISE SPECIFIED

DIMENSIONS ARE IN INCHES
TOLERANCES ARE:

DECIMALS	ANGLES
.XX ± .005	± 3°
.XXX ± .002	

DIMENSIONS IN BRACKETS
[X.XX] ARE MILLIMETERS
TOLERANCES ARE:

DECIMALS	ANGLES
.X ± .13	± 3°
.XX ± .05	

DO NOT SCALE DRAWING

APPROVALS

DRAWN	DATE
CUONG PHAM	09-16-21
CHECKED	DATE
TERRI LANG	09-16-21

THE INFORMATION AND DESIGN DISCLOSED HEREIN WAS ORIGINATED BY AND IS THE PROPERTY OF CIRCUIT ASSEMBLY CORPORATION. CIRCUIT ASSEMBLY CORPORATION RESERVES ALL RIGHTS, PROPRIETARY, DESIGN, MANUFACTURING, REPRODUCTION, USE AND SALES RIGHTS THEREOF, AND TO ANY ARTICLE DISCLOSED HEREIN EXCEPT TO THE EXTENT RIGHTS ARE EXPRESSLY GRANTED TO OTHERS. THE FOREGOING DOES NOT APPLY TO VENDOR PROPRIETARY RIGHTS.

CA CIRCUIT ASSEMBLY CORP.
6 AUTRY SUITE 150, IRVINE, CALIFORNIA 92618

ACCESSORY_IDC2 SERIES
CLIP - COVER RETAINER (CA-IDS2-C)
"RoHS"

SIZE	CODE IDENT NO.	DRAWING NO.	REV.
C	52072	630061	A
SCALE: 20-1		SHEET 1 OF 1	

4

3

2

1