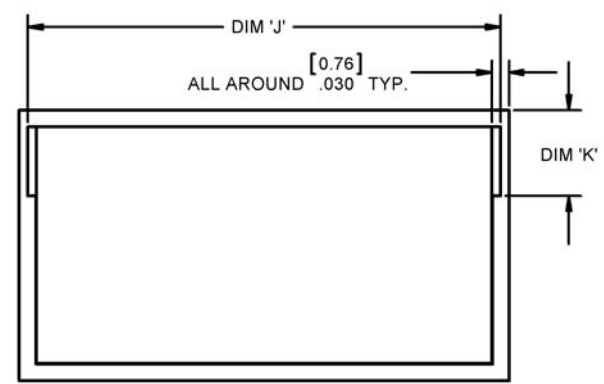
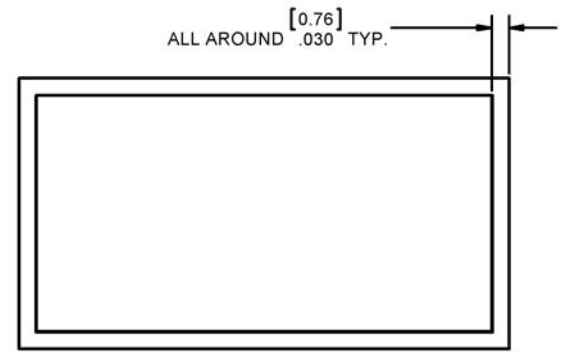
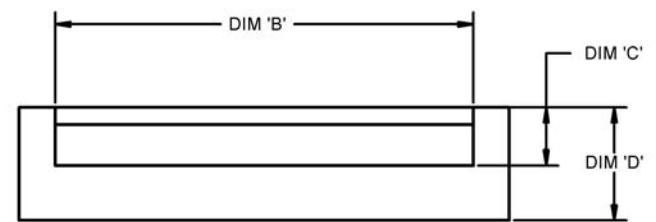
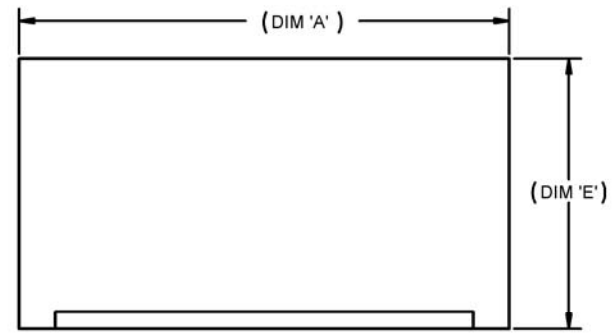


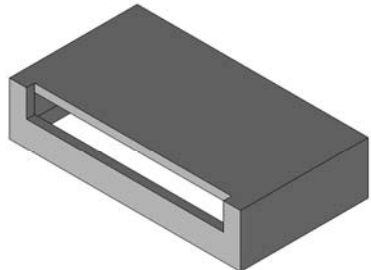
PART NO. CA-630060-XX

REVISIONS			
LTR	DESCRIPTION	DATE	APPROVED
A	INITIAL RELEASE SEE DO 7612	C.P. 4-14-21	T.L.



**3 TABULATION:**

DASH NO.	PART NO.	DIM 'A'		DIM 'B'		DIM 'C'		DIM 'D'		DIM 'E'		DIM 'J'		DIM 'K'															
		IN	MM	IN	MM	IN	MM	IN	MM	IN	MM	IN	MM	IN	MM														
-01	08-200-S100	0.450	11.43	0.390	9.91	0.100	2.54	0.195	4.95	0.470	11.94	----	----	----	----														
-02	14-200-S100	0.750	19.05	0.625	15.88							0.265	6.73	0.820	20.828	0.150	3.81	----	----	----	----								
-03	16-200-S100	0.850	21.59	0.725	18.42							0.195	4.95	0.820	20.828	0.150	3.81	----	----	----	----								
-04	16-270-S100			0.820	20.83			0.265	6.73			0.820	20.828	0.150	3.81	----	----	----	----	----									
-05	18-200-S100	0.950	24.13	0.890	22.61			0.100	2.54			0.395	10.03	0.470	11.94	----	----	----	----										
-06	18-400-S100			0.890	22.61							0.395	10.03			0.820	20.828	0.150	3.81	----	----	----	----	----					
-07	20-200-S100	1.050	26.67	0.990	25.15							0.080	2.03			0.195	4.95	0.570	14.48	----	----	----	----						
-08	22-200-S100	1.150	29.21	1.025	26.04															0.195	4.95	0.570	14.48	----	----	----	----	----	----
-09	24-200-S080	1.250	31.75	1.000	25.40															0.195	4.95	0.570	14.48	----	----	----	----	----	----
-10	24-200-S100			1.175	29.85							0.795	20.19			0.795	20.19	0.795	20.19	----	----	----	----	----					
-11	24-270-S100	1.245	31.62	1.215	30.86							0.100	2.54			0.265	6.73	0.795	20.19	1.215	30.86	0.130	3.30						



ORDERING NOMENCLATURE:

**CA-630060-XX**

**3 OPTION (DASH NO):**  
FOR ORDERING: REFER TABULATION, MANUFACTURING P/N:

**XX-XXX - SXXX**



- 2. MATERIAL: POLYAMIDE (NYLON) 15% GLASS FILLED, COLOR BLACK, UL 94 V-0
- 1. MEETS THE REQUIREMENTS OF THE EUROPEAN PARLIAMENT AND THE RESTRICTION OF THE USE OF CERTAIN HAZARDOUS SUBSTANCES IN ELECTRICAL AND ELECTRONIC EQUIPMENT. (RoHS)

NOTES: UNLESS OTHERWISE SPECIFIED

-04: 16-270-S100 &  
-11: 24-270-S100 SHOWN.

DIMENSIONS IN ARE IN INCHES TOLERANCES ARE:  DECIMALS 3X ±.005 .XXX ±.002  DIMENSIONS IN BRACKET (X.XX) ARE MILLIMETERS TOLERANCES ARE:  DECIMALS X ±.13 .XX ±.05  DO NOT SCALE DRAWING	<b>APPROVALS</b> DRAWN CUONG P.	<b>DATE</b> 4-14-21	<b>CIRCUIT ASSEMBLY CORP.</b> 6 AURTY SUITE 150, IRVINE, CALIFORNIA 92618
	CHECKED TIM CARTER	4-14-21	
THE INFORMATION AND DESIGN EMPLOYED HEREIN WAS ORIGINATED BY AND IS THE PROPERTY OF CIRCUIT ASSEMBLY CORPORATION. CIRCUIT ASSEMBLY CORPORATION RESERVES ALL PATENT, PROPRIETARY, DESIGN, MANUFACTURING, REPRODUCTION, USE AND SALES RIGHTS THEREBY, AND TO ANY ARTICLE DISCLOSED HEREIN EXCEPT TO THE EXTENT RIGHTS ARE EXPRESSLY GRANTED TO OTHERS. THE FOREGOING DOES NOT APPLY TO VENDOR PROPRIETARY RIGHTS.			<b>ACCESSORY - P SERIES COVERS - HEADER, SIDE ENTRY CA-630060-XX, 'RoHS'</b>
<b>SIZE</b> C	<b>CODE IDENT NO.</b> 52072	<b>DRAWING NO.</b> 630060	<b>REV.</b> A
<b>SCALE: 6:1</b>		<b>SHEET 1 OF 1</b>	