

PART NO. CA-630059-XX

REVISIONS				
LTR	DESCRIPTION	DATE	APPROVED	
A	RELEASE RELEASE SEE DO 7612 C.P.	4-14-21	T.L.	

ORDERING NOMENCLATURE:

CA-630059-XX

3 OPTION (DASH NO):
FOR ORDERING: REFER TABULATION,
MANUFACTURING P/N:

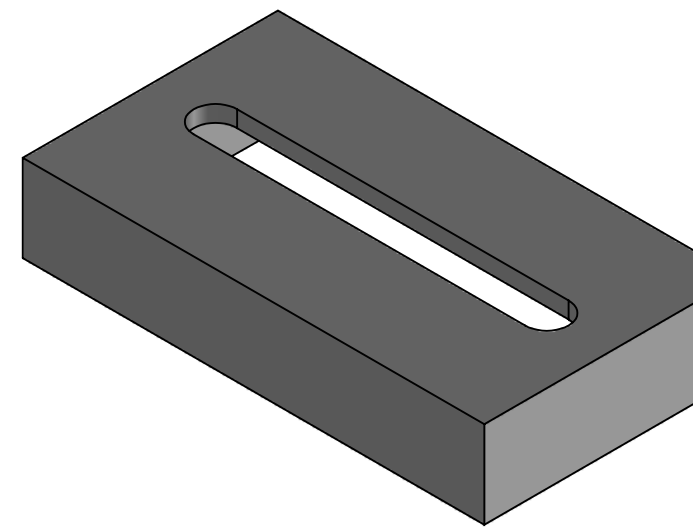
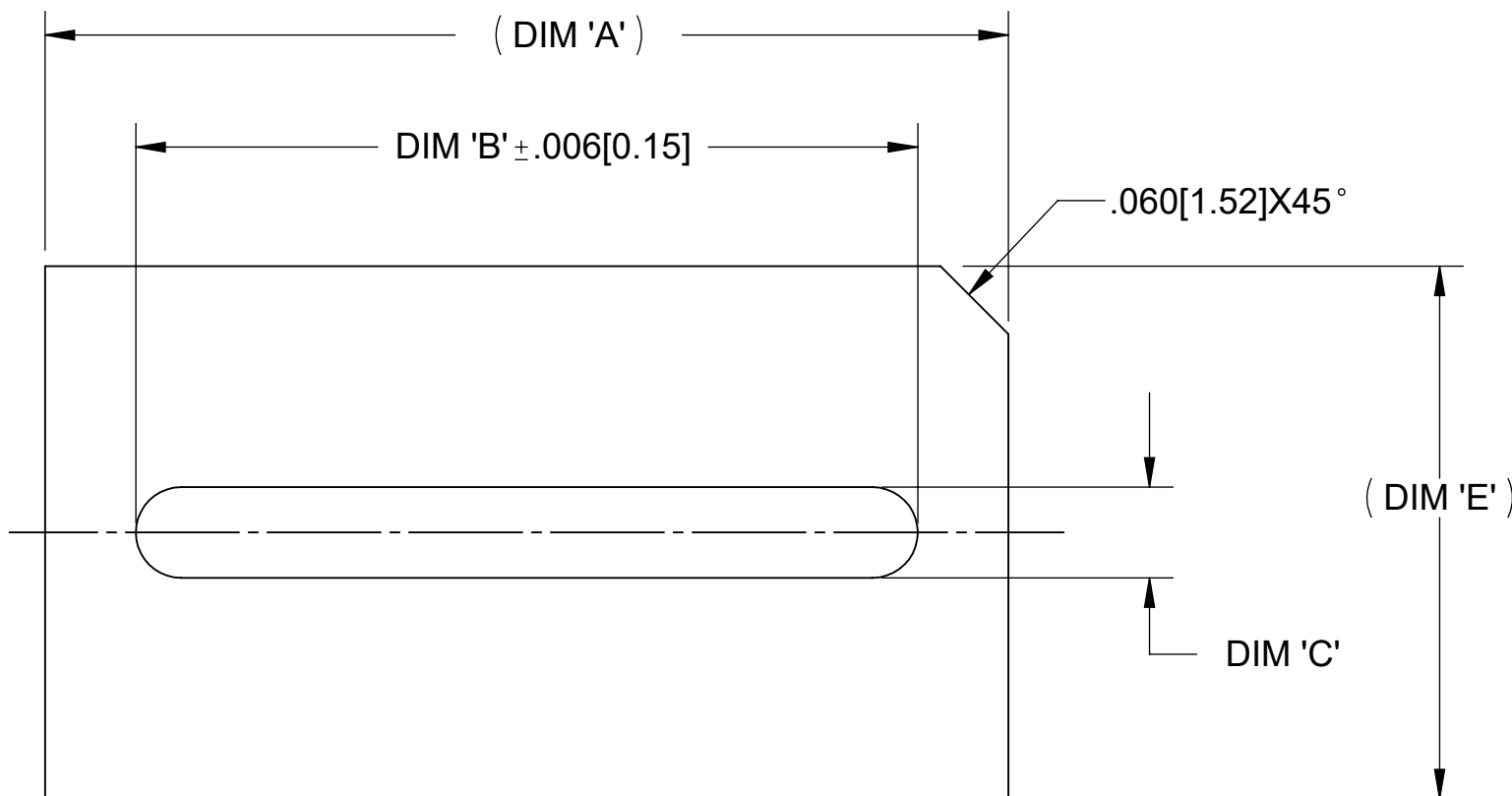
XX-XXX-XXX-XXX

NO OF POS

DIM 'D'

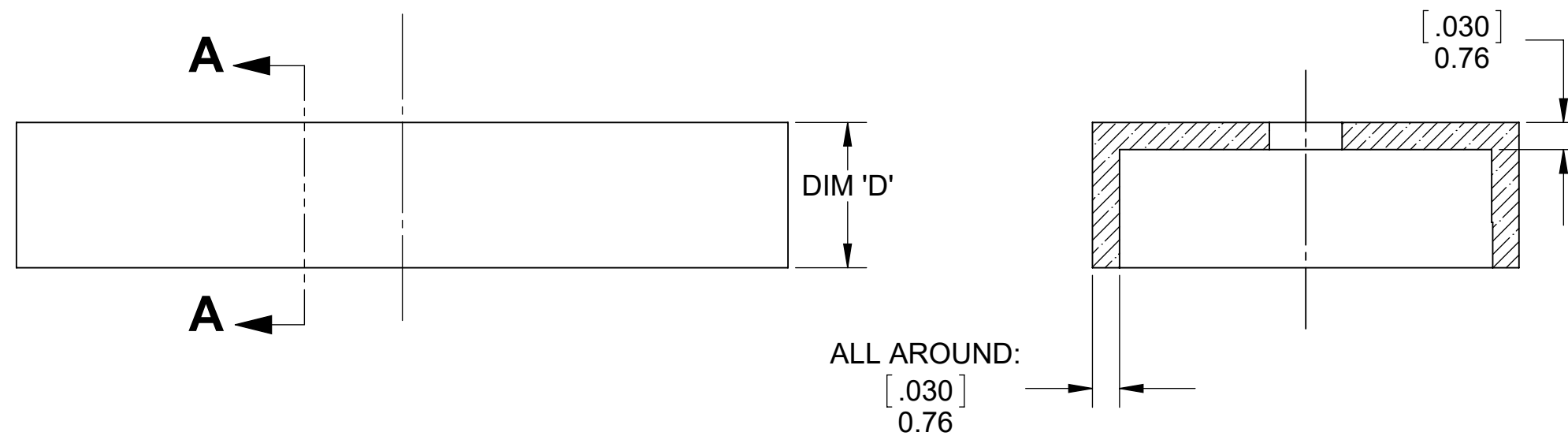
DIM 'C'

DIM 'G'



3 TABULATION:

DASH NO.	PART NO.	DIM 'A'		DIM 'B'		DIM 'C'		DIM 'D'		DIM 'E'		DIM 'G'	
		IN	MM	IN	MM	IN	MM	IN	MM	IN	MM	IN	MM
-01	08-160-000			CLOSE		CLOSE							
-02	08-160-050	0.450	11.43	0.390	9.91	0.050	1.27	0.160	4.06	0.470	11.94	0.390	9.906
-03	08-160-080			0.390	9.91	0.080	2.54						
-04	14-160-000			CLOSE		CLOSE							
-05	14-160-050			0.590	14.99	0.050	1.27						
-06	14-160-050-690			0.690	17.53	0.050	1.27	0.160	4.06	0.470	11.94	0.690	17.53
-07	14-160-100-690			0.690	17.53	0.100	2.54						
-08	14-160-080-690			0.590	14.99	0.080	2.03						
-12	14-970-000			CLOSE		CLOSE		0.970	24.64				
-13	16-160-000			CLOSE		CLOSE							
-14	16-160-050			0.790		0.050	1.27					0.790	20.07
-16	16-160-100-790			0.790		0.100	2.54	0.160	4.06	0.470	11.94		
-17	16-160-080			0.690	17.53							0.890	22.61
-21	18-160-080	0.950	24.13	0.890	22.61	0.080	2.03					0.990	25.15
-22	20-160-080-990	1.050	26.67	0.990	25.15								
-23	22-170-000			CLOSE		CLOSE							
-24	22-170-050	1.150	29.21	0.990	25.15	0.050	1.27	0.170	4.32	0.570	14.48	1.090	27.69
-25	22-170-080			0.990	25.15	0.080	2.03						
-26	24-170-000			CLOSE		CLOSE							
-27	22-170-050	1.245	31.62	1.100	27.94	0.050	1.27	0.170	4.32	0.795	20.19	1.185	30.10
-28	22-170-080			1.100	27.94	0.080	2.03						
-31	28-170-050	1.445	36.70	1.300	33.02							1.385	35.18
-32	36-170-050	1.845	46.86	1.700	43.18	0.050	1.27	0.170	4.32	0.795	20.19	1.785	45.34
-33	40-170-050	2.045	51.94	1.900	48.26							1.985	50.42
-35	46-370-100	2.345	59.56	2.000	50.80	0.100	2.54	0.370	9.40	0.470	11.94	2.285	58.04



SECTION A-A
SCALE 6 : 1

2. MATERIAL: POLYAMIDE (NYLON), PA66, 15% GLASS FILLED, COLOR BLACK, UL 94 V-0
1. MEETS THE REQUIREMENTS OF THE EUROPEAN PARLIAMENT AND THE RESTRICTION OF THE USE OF CERTAIN HAZARDOUS SUBSTANCES IN ELECTRICAL AND ELECTRONIC EQUIPMENT. (RoHS)

NOTES: UNLESS OTHERWISE SPECIFIED

DIMENSIONS IN ARE IN INCHES
TOLERANCES ARE:

DECIMALS ANGLES
.XX ±.005 ±3°
.XXX ±.002

DIMENSIONS IN BRACKET (X.XX)
ARE MILLIMETERS
TOLERANCES ARE:

DECIMALS ANGLES
.X ±.13 ±3°
.XX ±.05

DO NOT SCALE DRAWING

APPROVALS	DATE
DRAWN CUONG P.	4-14-21
CHECKED TERRI LANG	4-14-21

CA CIRCUIT ASSEMBLY CORP.
6 AUTRY SUITE 150, IRVINE, CALIFORNIA 92618

ACCESSORY - P SERIES
COVERS-HEADER, TOP ENTRY, CA-630059-XX
"RoHS"

SIZE	CODE IDENT NO.	DRAWING NO.	REV.
C	52072	630059	A

SCALE: 6:1 SHEET 1 OF 1