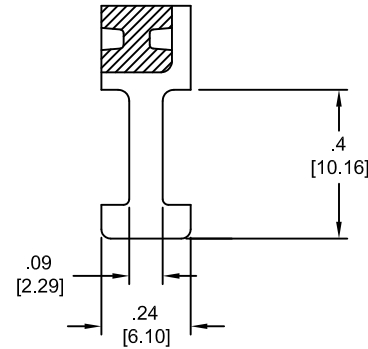
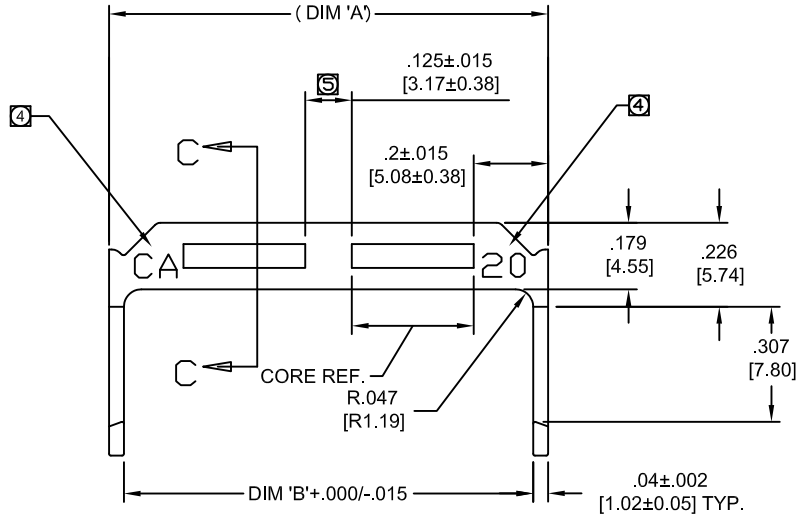


PART NO. CA-SRXXIDS2

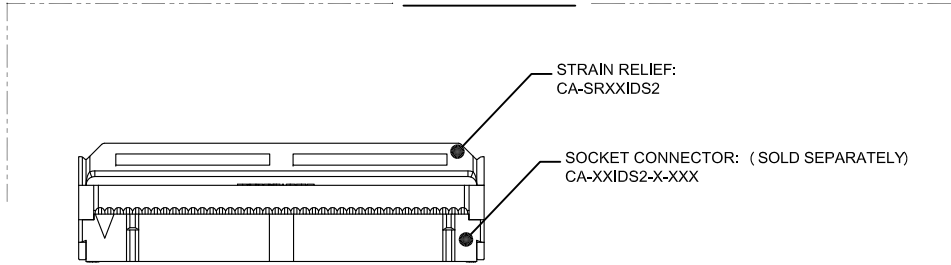
REVISIONS				
LTR	DESCRIPTION	DATE	APPROVED	
A	INITIAL RELEASE SEE DO 7488	CP 11-05-18	T.L.	
B	SEE DO 7636	CP 10-18-21	T.C.	



SECTION C-C

TABULATION:

APPLICATION



PART NO.	DIM 'A'		BIM 'B'		NO OF RIBS	CORE SIZE REF.	
	INCH	MM	INCH	MM		☐	INCH
CA-SR10IDS2	0.680	17.27	0.600	15.24	N/A	0.280	7.11
CA-SR14IDS2	0.880	22.35	0.800	20.32	N/A	0.480	12.19
CA-SR16IDS2	0.980	24.89	0.900	22.86	1	0.228	5.79
CA-SR20IDS2	1.180	29.97	1.100	27.94	1	0.328	8.33
CA-SR26IDS2	1.480	37.59	1.400	35.56	2	0.277	7.04
CA-SR34IDS2	1.880	47.75	1.800	45.72	3	0.277	7.04
CA-SR40IDS2	2.180	55.37	2.100	53.34	4	0.256	6.50
CA-SR50IDS2	2.680	68.07	2.600	66.04	5	0.276	7.01
CA-SR60IDS2	3.180	80.77	3.100	78.74	6	0.290	7.37

- ⑤ NO OF RIBS PER PART SHALL BE AS SHOWN IN TABULATION BLOCK.
- ④ LOGO AND NUMBER SHALL BE LOCATED APPROX. WHERE SHOWN, HEIGHT .060" RAISED .005", NUMBER SHALL RUN SEQUENTIALLY WITH "NO OF POS." SHALL BE REMOVED.

3. INTERPRET DIMENSIONS AND TOLERANCES PER ASME Y14.5M - 1994

2. MATERIAL : UNFILLED POLYESTER , UL94V-0, COLOR: GRAY

1. MEETS THE REQUIREMENTS OF THE EUROPEAN PARLIAMENT AND THE RESTRICTION OF THE USE OF CERTAIN HAZARDOUS SUBSTANCES IN ELECTRICAL AND ELECTRONIC EQUIPMENT. (RoHS)

NOTES: UNLESS OTHERWISE SPECIFIED

DIMENSIONS ARE IN INCHES TOLERANCES ARE:		APPROVALS	DATE	CIRCUIT ASSEMBLY CORP. 6 AURTY SUITE 150, IRVINE, CALIFORNIA 92618 STRAIN RELIEF - IDS2 SERIES CA-SRXXIDS2 "RoHS"								
DECIMALS	ANGLES	DRAWN	11-05-18									
.XX ± .010	± 3°	CUONG P.										
.XXX ± .005		CHECKED	11-05-18	<table border="1"> <tr> <td>SIZE</td> <td>CODE IDENT NO.</td> <td>DRAWING NO.</td> <td>REV.</td> </tr> <tr> <td>C</td> <td>52072</td> <td>630052</td> <td>B</td> </tr> </table>	SIZE	CODE IDENT NO.	DRAWING NO.	REV.	C	52072	630052	B
SIZE	CODE IDENT NO.	DRAWING NO.	REV.									
C	52072	630052	B									
DIMENSIONS IN BRACKETS (XXX) ARE IN MILLIMETERS TOLERANCES ARE:		THE INFORMATION AND DESIGN DISCLOSED HEREIN WAS ORIGINATED BY AND IS THE PROPERTY OF CIRCUIT ASSEMBLY CORPORATION. CIRCUIT ASSEMBLY CORPORATION RESERVES ALL PATENT, PROPRIETARY, DESIGN, MANUFACTURING, REPRODUCTION, USE AND SALES RIGHTS THERE TO, AND TO ANY ARTICLE DISCLOSED HEREIN EXCEPT TO THE EXTENT RIGHTS ARE EXPRESSLY GRANTED TO OTHERS. THE FOREGOING DOES NOT APPLY TO VENDOR PROPRIETARY RIGHTS.		SCALE: 4:1								
DECIMALS	ANGLES	DO NOT SCALE DRAWING		SHEET 1 OF 1								
.X ± .25	± 3°											
.XX ± .13												

4

3

2

A 1