

PART NO. CA-XXXMP-X1B

| REVISIONS |                             |      |          |      |
|-----------|-----------------------------|------|----------|------|
| LTR       | DESCRIPTION                 | DATE | APPROVED |      |
| A         | INITIAL RELEASE SEE DO 4264 | C.P. | 12-8-00  | A.J. |
| B         | SEE DO 5754                 | C.P. | 04-21-05 | L.F. |
| C         | SEE DO 6793                 | C.P. | 12-29-08 | I.M. |
| D         | SEE DO 7161                 | C.P. | 11-08-11 | I.M. |
| E         | SEE DO 7415                 | C.P. | 06-26-17 | I.M. |
| F         | SEE DO 7426                 | C.P. | 02-16-18 | T.H. |
| G         | SEE DO 7450                 | C.P. | 03-23-18 | T.H. |
| H         | SEE DO 7535                 | C.P. | 08-05-19 | T.L. |

# CA- X XX MP - X 1 B

**NUMBER OF ROWS**

S = SINGLE ROW  
D = DUAL ROW

**NO. OF CONTACT POSITION**

01 - 40 SINGLE ROW  
04 - 80 DUAL ROW

**SCREW MACHINE CONTACT PLUG**

**PLUG PIN TYPE** ⑤

E = PIN  
F = PIN

**TAIL TYPE**

1 = SOLDER TAIL

**PLATING**

B = .000010 [.00025] GOLD OVER  
.000075 [.00190] NICKEL

5. MARK "▼" DIMENSION MUST BE CONTROLLED.

MARK "⊗" IS DIMENSION No.

4. MEETS THE REQUIREMENTS OF THE EUROPEAN PARLIAMENT AND THE RESTRICTION OF THE USE OF CERTAIN HAZARDOUS SUBSTANCES IN ELECTRICAL AND ELECTRONIC EQUIPMENT. (ROHS)

**3. SPECIFICATIONS :**

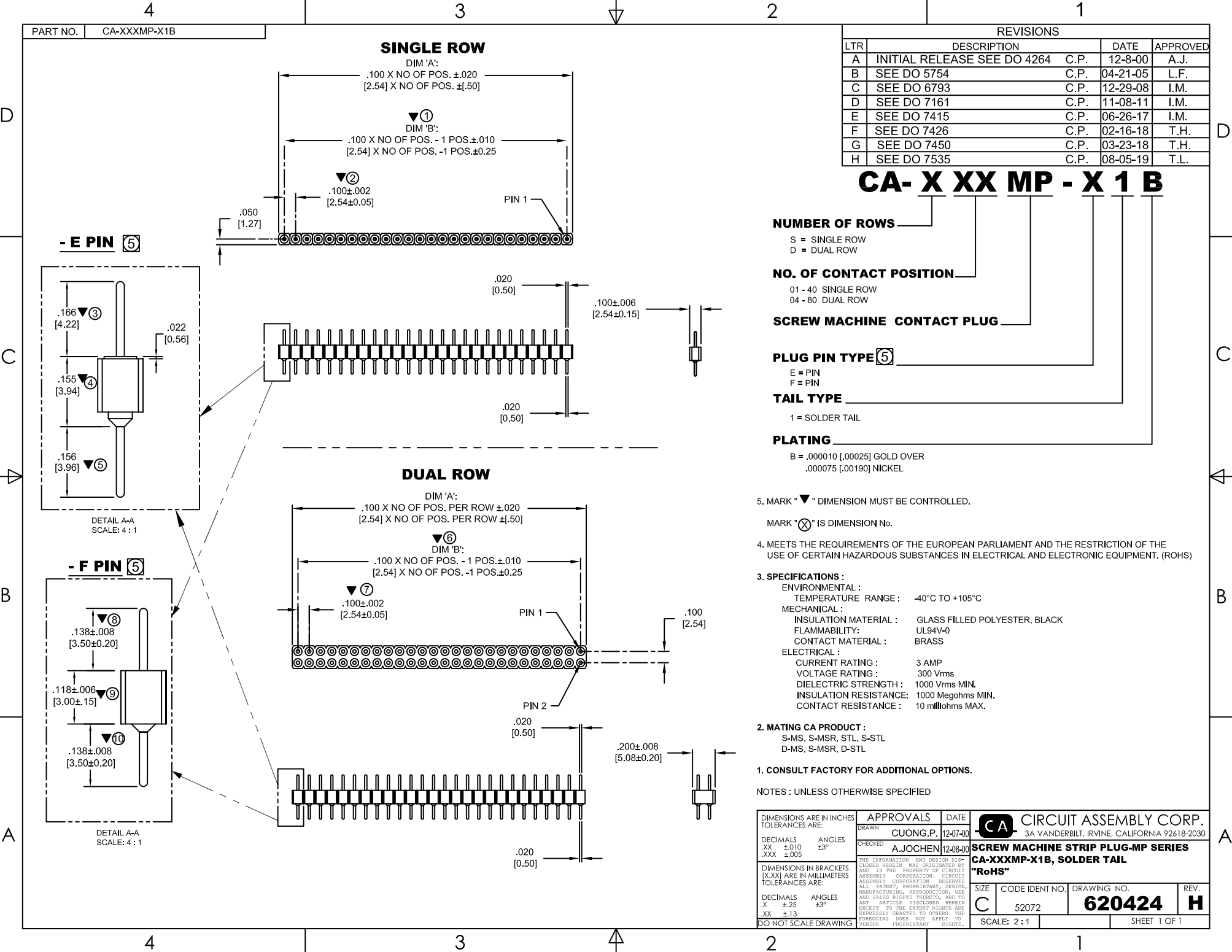
- ENVIRONMENTAL :**  
TEMPERATURE RANGE : -40°C TO +105°C
- MECHANICAL :**  
INSULATION MATERIAL : GLASS FILLED POLYESTER, BLACK  
FLAMMABILITY : UL94V-0  
CONTACT MATERIAL : BRASS
- ELECTRICAL :**  
CURRENT RATING : 3 AMP  
VOLTAGE RATING : 300 Vrms  
DIELECTRIC STRENGTH : 1000 Vrms MIN.  
INSULATION RESISTANCE: 1000 Megohms MIN.  
CONTACT RESISTANCE : 10 milliohms MAX.

**2. MATING CA PRODUCT :**

- S-MS, S-MSR, STL, S-STL  
D-MS, S-MSR, D-STL

**1. CONSULT FACTORY FOR ADDITIONAL OPTIONS.**

NOTES : UNLESS OTHERWISE SPECIFIED



|   |        |  |  |                |  |
|---|--------|--|--|----------------|--|
| DIMENSIONS ARE IN INCHES<br>TOLERANCES ARE: |        | APPROVALS  |  | DATE           | <b>CIRCUIT ASSEMBLY CORP.</b><br>3A VANDERBILT, IRVINE, CALIFORNIA 92618-2030                  |
| DECIMALS                                    | ANGLES | DRAWN  |  | 12-07-00       |  |
| .XX ±.010                                   | ±3°    | CHECKED  |  | 12-08-00       | <b>SCREW MACHINE STRIP PLUG-MP SERIES</b><br><b>CA-XXXMP-X1B, SOLDER TAIL</b><br><b>"RoHS"</b> |
| .XXX ±.005                                  |        | AJOCHEM  |  |                |  |
| DIMENSIONS IN BRACKETS<br>TOLERANCES ARE:   |        | THE INFORMATION AND DESIGN DISCLOSED HEREIN WAS ORIGINATED BY AND IS THE PROPERTY OF CIRCUIT ASSEMBLY CORPORATION. CIRCUIT ASSEMBLY CORPORATION RESERVES ALL PATENT, PROPRIETARY, DESIGN, MANUFACTURING, REPRODUCTION, USE AND SALES RIGHTS THEREON, AND TO ANY ARTICLE DISCLOSED HEREIN EXCEPT TO THE EXTENT RIGHTS ARE EXPRESSLY GRANTED TO OTHERS. THE FOREGOING DOES NOT APPLY TO VENDOR PROPRIETARY RIGHTS. |  | SIZE           | REV.   |
| DECIMALS                                    | ANGLES | DO NOT SCALE DRAWING   |  | C              | H  |
| .X ±.25                                     | ±3°    |  |  | CODE IDENT NO. | DRAWING NO.  |
| .XX ±.13                                    |        |  |  | 52072          | 620424   |
|   |        |  |  | SCALE: 2:1     | SHEET 1 OF 1   |