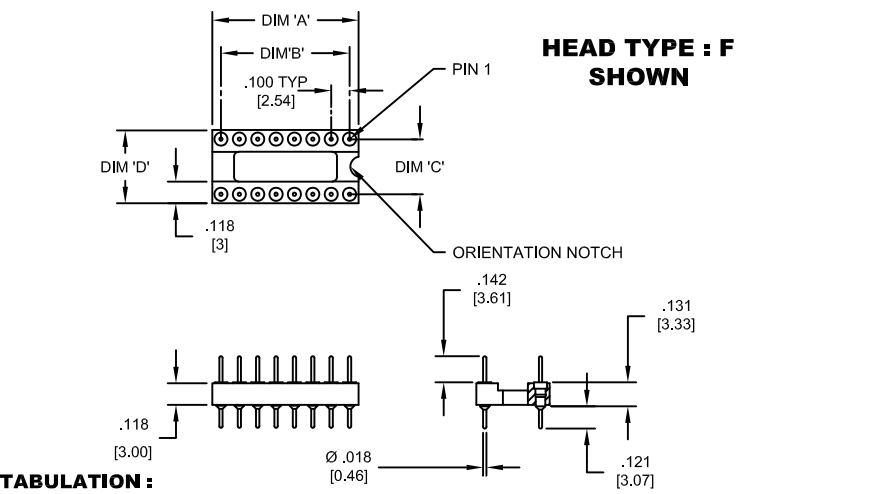
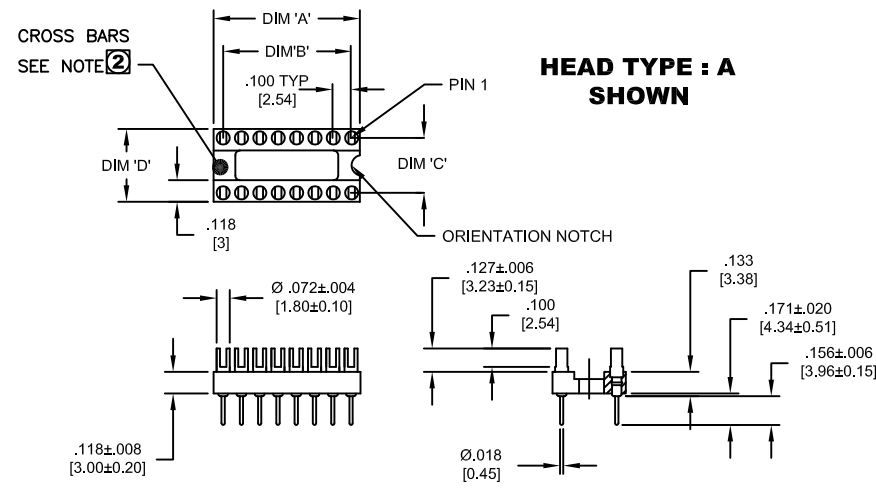


PART NO. CA-XXMP-X1B

REVISIONS				
LTR	DESCRIPTION	DATE	APPROVED	
A	INITIAL RELEASE SEE DO 4299	C.P. 01-08-01	A.J.	
B	SEE DO 6793	C.P. 12-29-08	I.M.	
C	SEE DO 7027	C.P. 10-15-10	A.J.	
D	SEE DO 7171	C.P. 01-12-12	I.M.	
E	SEE DO 7203	C.P. 08-16-12	I.M.	
F	SEE DO 7617	C.P. 06-02-21	T.L.	



**TABULATION :**

NO OF POSITION	DIM 'A' ± .008 [0.20]		DIM 'B' ± .004 [0.10]		DIM 'C' ± .004 [0.10]		DIM 'D' ± .008 [0.20]	
	IN	MM	IN	MM	IN	MM	IN	MM
06	.300	7.62	.200	5.08	.300	7.62	.400	10.16
08	.400	10.16	.300	7.62	.300	7.62	.400	10.16
14	.700	17.78	.600	15.24	.300	7.62	.400	10.16
16	.800	20.32	.700	17.78	.300	7.62	.400	10.16
18	.900	22.86	.800	20.32	.300	7.62	.400	10.16
20	1.000	25.4	.900	22.86	.300	7.62	.400	10.16
22	1.100	27.94	1.000	25.4	.400	10.16	.500	12.70
24-3*	1.200	30.48	1.100	27.94	.300	7.62	.400	10.16
24	1.200	30.48	1.100	27.94	.600	15.24	.700	17.78
28	1.400	35.56	1.300	33.02	.600	15.24	.700	17.78
32	1.600	40.64	1.500	38.10	.600	15.24	.700	17.78
40	2.000	50.8	1.900	48.26	.600	15.24	.700	17.78

\*24 POSITION IS ALSO AVAILABLE WITH DIM 'C' : .300[7.62]  
ADD -3 TO THE END OF PART NUMBER.

**CA - XX MP - X 1 B**

**NO. OF PIN POSITIONS** \_\_\_\_\_

**SCREW MACHINE CONTACT - PLUG, OPEN FRAME** \_\_\_\_\_

**PLUG HEAD TYPE** \_\_\_\_\_  
A = FORK  
F = POST

**TAIL TYPE** \_\_\_\_\_  
1 = SOLDER TAIL

**PLATING** \_\_\_\_\_  
B = .000010 [.00025] GOLD OVER  
.000075 [.00190] NICKEL

5. MEETS THE REQUIREMENTS OF THE EUROPEAN PARLIAMENT AND THE RESTRICTION OF THE USE OF CERTAIN HAZARDOUS SUBSTANCES IN ELECTRICAL AND ELECTRONIC EQUIPMENT. (RoHS)

4. SPECIFICATIONS :
- ENVIRONMENTAL : TEMPERATURE RANGE : -55°C TO +125°C
  - MECHANICAL : INSULATOR MATERIAL : GLASS FILLED POLYESTER, BLACK, UL94V-0
  - CONTACT MATERIAL : BRASS
  - ELECTRICAL : CURRENT RATING : 3 AMP
  - VOLTAGE RATING : 300 Vrms
  - DIELECTRIC WITHSTANDING VOLTAGE : 1000 Vrms
  - INSULATION RESISTANCE : >1000 Megohms
  - CONTACT RESISTANCE : 10 Milliomhs. min.

3. MATING CA PRODUCT : MS

- ② CA-06MP THRU CA-16MP HAVE 2 CROSS BARS
- CA-18MP THRU CA-28MP HAVE 3 CROSS BARS
- CA-32MP HAVE 3 CROSS BARS
- CA-40MP HAVE 4 CROSS BARS

1. CONSULT FACTORY FOR ADDITIONAL PIN CONFIGURATIONS.

NOTES : UNLESS OTHERWISE SPECIFIED

DIMENSIONS ARE IN INCHES TOLERANCES ARE:	APPROVALS	DATE	<b>CIRCUIT ASSEMBLY CORP.</b> 6 AUTRY SUITE 150, IRVINE CALIFORNIA 92618
	DRAWN <b>CUONG.P.</b>	01-02-01	
DECIMALS ANGLES .XX ± .010 ± 3° .XXX ± .005	CHECKED	DATE	<b>DIP PLUG OPEN FRAME</b> <b>CA-XXMP-X1B</b> <b>"RoHS"</b>
DIMENSIONS IN BRACKETS [X.XX] ARE IN MILLIMETERS TOLERANCES ARE:	<b>ART JOCHEN</b>	01-02-01	
DECIMALS ANGLES .X ± .25 ± 3° .XX ± .13	<small>THE INFORMATION AND DESIGN DISCLOSED HEREIN WAS ORIGINATED BY AND IS THE PROPERTY OF CIRCUIT ASSEMBLY CORPORATION. CIRCUIT ASSEMBLY CORPORATION RESERVES ALL PATENT, PROPRIETARY, DESIGN, MANUFACTURING, REPRODUCTION, USE AND SALES RIGHTS THEREON, AND TO ANY ARTICLE DISCLOSED HEREIN EXCEPT TO THE EXTENT RIGHTS ARE EXPRESSLY GRANTED TO OTHERS. THE FOREGOING DOES NOT APPLY TO VENDOR PROPRIETARY RIGHTS.</small>		SIZE <b>C</b>
DO NOT SCALE DRAWING	CODE IDENT NO. 52072	DRAWING NO. <b>620423</b>	REV. <b>F</b>
	SCALE: 2:1	SHEET 1 OF 1	